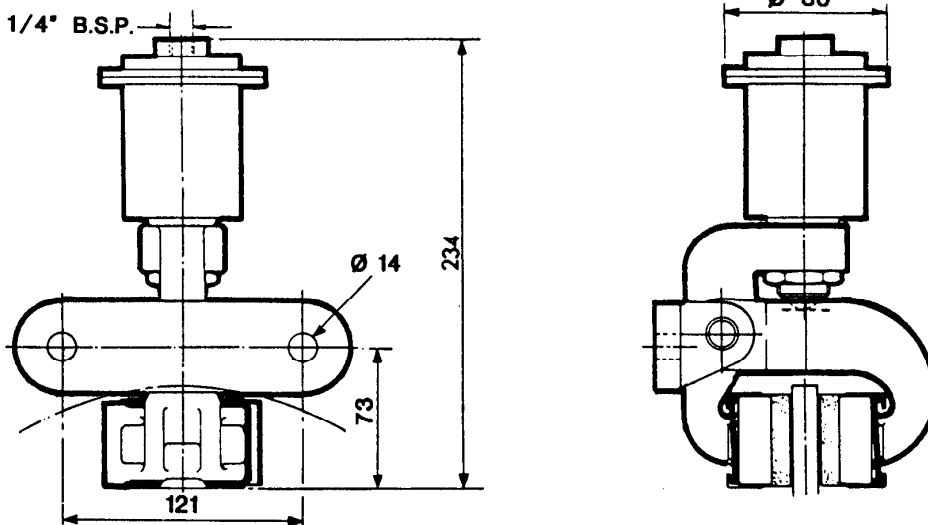


MSE & MSG DISC BRAKE CALIPERS PNEUMATIC

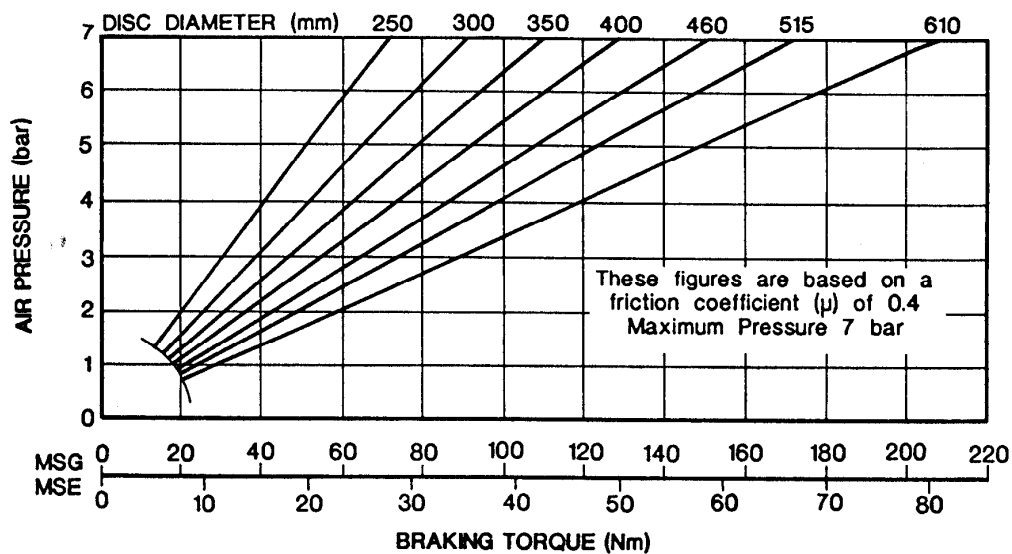
DB 8007

Issue. 2 | Date. May 1990

Nominal dimensions given, for specific dimensions please contact Twiflex Limited
For caliper dimensions see DB 8008



Caliper weight including Thruster = 2.5kg
Maximum Braking Force MSE = 290N
MSG = 750N
Compressed air consumption MSE = 8cc
MSG = 21cc



The ratings shown on the above graph are based on fully bedded and conditioned brake pads. For bedding-in and conditioning procedures see Publication M1060.

Braking Force is defined as the Tangential Force acting on the brake disc at the Effective Disc Radius.
Braking Torque (Nm) = Braking Force (N) x Effective Disc Radius (m)
where Effective Disc Radius = Actual Disc Radius - 0.03



Distribuidor para España:
FU IBERICA, S.L.

TW2 5AQ
: 261704 TWIFLX G

Trafalgar, 4, planta 5
Tel. 268 18 33 - Fax. 268 32 92
08010 BARCELONA