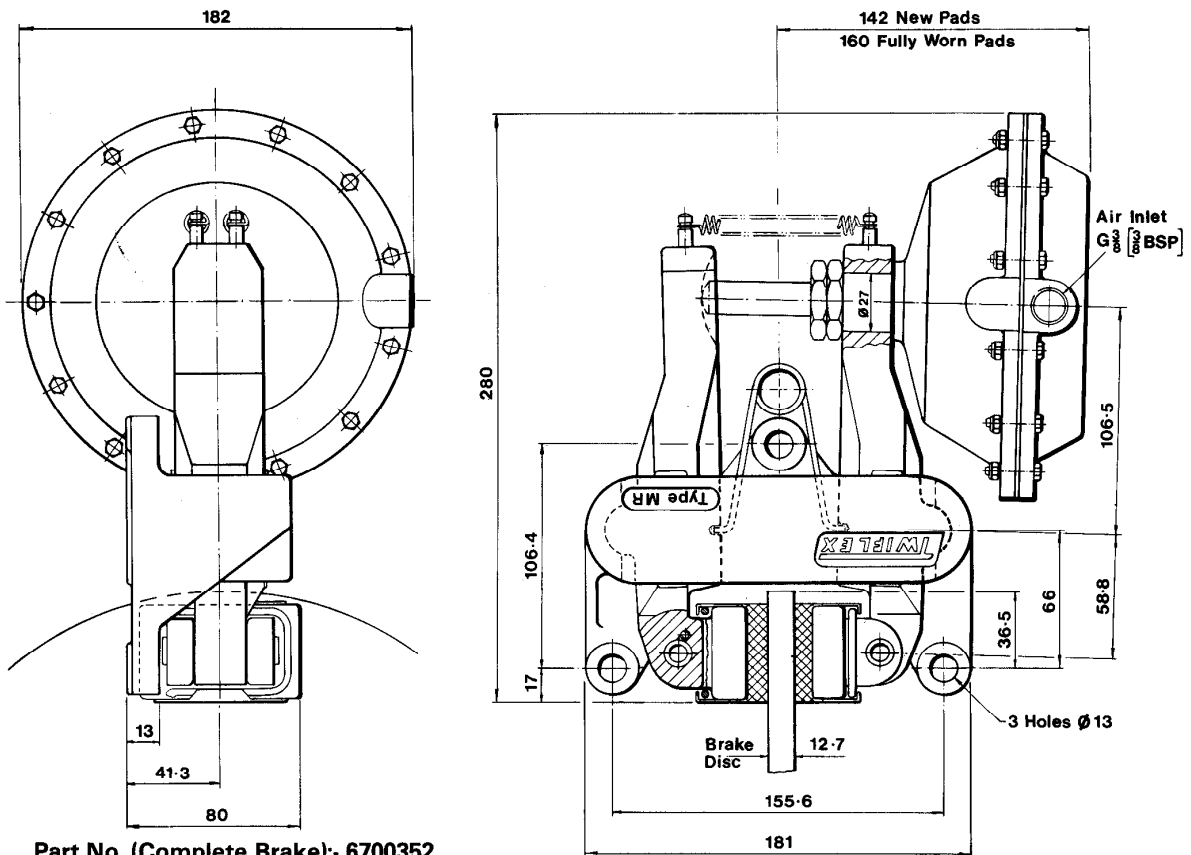


**DISC BRAKE CALIPER
TYPES: MRB 5 and MRB 5 (1")
AIR APPLIED—SPRING RELEASED**

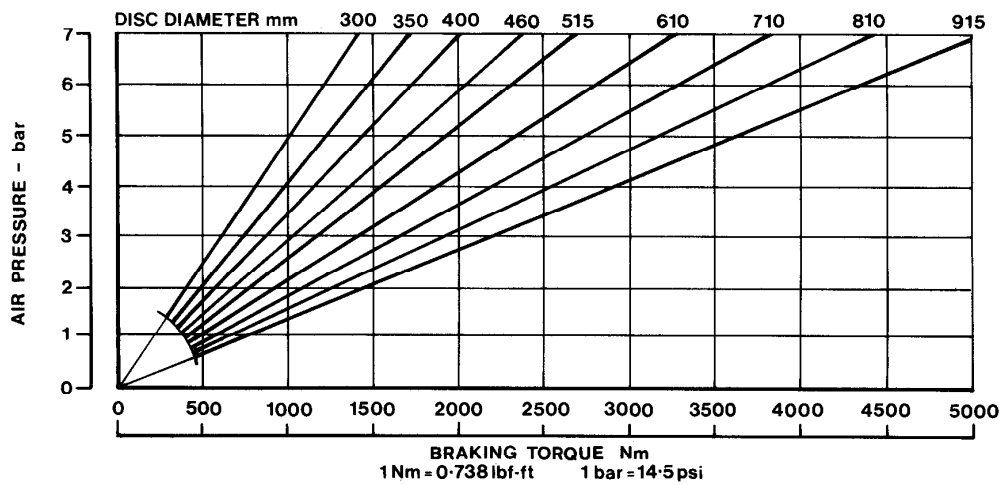
DB 3020

Issue 2

Date: May 84



Part No. (Complete Brake):- 6700352



The ratings shown on the above graph are based on fully bedded-in pads.

- Caliper—constructed from SG iron to BS 2789
- Thruster—constructed from aluminium alloy to BS 1490
- Finish—hammer blue paint
- Weight (caliper and thruster)—10.4 kg
- Volume displacement of thruster at full stroke is 426 ml
- Total pad area—58 cm²



Distribuidor para España:
FU IBERICA, S. L.

Trafalgar, 4, planta 5
Telf. 268 18 33 - Fax: 268 32 92
08010 BARCELONA