

DISC BRAKE CALIPER TYPE: VH

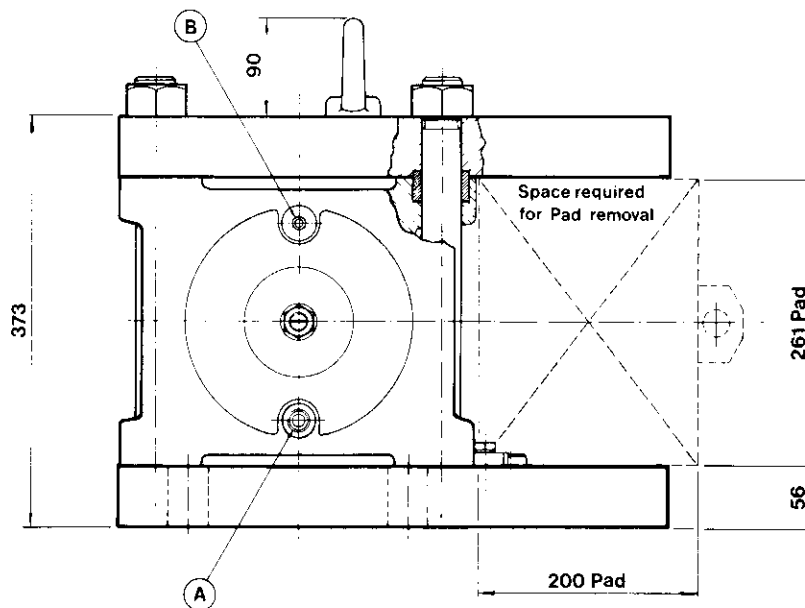
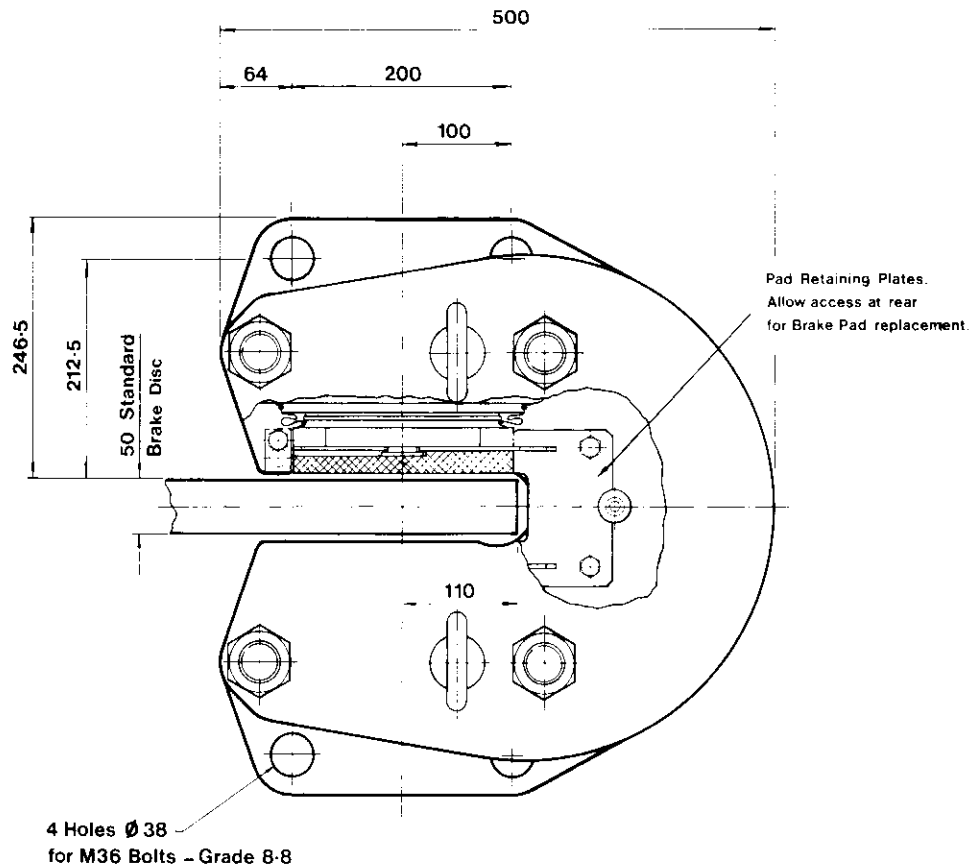
DB 2015

HYDRAULICALLY APPLIED—SPRING RELEASED

Issue 2

Date: May 84

See Publication Ref. No. P163 for Installation, Operation and Maintenance.
Technical and Performance Data on reverse side.



Fittings/Ports:

- (A) Inlet Port — G ½" (½" BSP) 1 each side.*
- (B) Bleed Screw — G ⅜" (⅜" BSP) 1 each side.

* Inlet ports are usually supplied with fittings for Ø 12 × 1.5 mm pipe to DIN 2391C

TV
THE
Tele

Distribuidor para España:
FU IBERICA, S.L.

Trafalgar, 4, planta 5
Tel. 268 18 33 - Fax. 268 32 92
08010 BARCELONA

LTD.
AND TW2 5AQ
04 AUT TWI G

DISC BRAKE CALIPER TYPE: VH

DB 2015

HYDRAULICALLY APPLIED—SPRING RELEASED

Issue 2

Date: May 84

Technical Data:

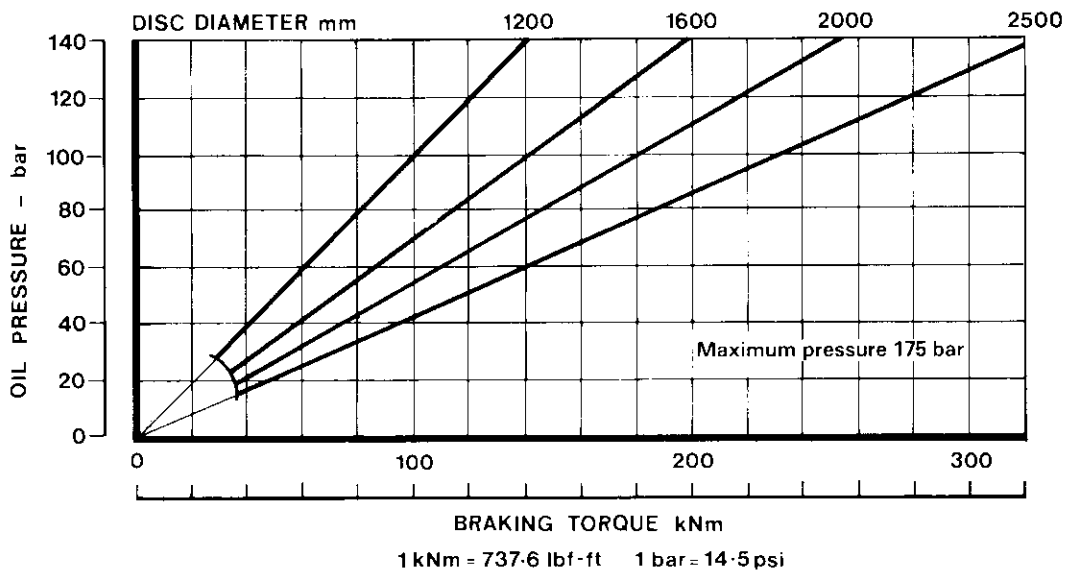
Total friction pad area per caliper — 1039 cm²
Caliper weight — 287 kg Approx.
Minimum disc diameter — 800 mm.
Disc thickness (standard) — 50 mm.*
Brake pad retraction—adjustable up to 6mm max.
Brake pad wear allowance—13mm.
Total oil displacement for 6mm retraction at each pad—310 ml.
Hydraulic fluids — Use with MINERAL BASE HYDRAULIC FLUIDS ONLY.**
Working pressure — 140 bar (normal)
— 175 bar (maximum)

*Calipers can be designed to accommodate disc (or wheel) thickness from 38 mm upwards.

** Such as Burmah Castrol Hyspin AWS32, Shell Tellus 37 or equivalent.

Correctly formulated water in oil emulsions may also be used.

Performance Data:



The above braking torque figures are based on a nominal pad friction coefficient $\mu = 0.4$ (Pad Part No. 7950981) and apply to fully bedded-in pads.

Braking Force at 140 bar hydraulic pressure \approx 285 kN.

Braking Torque (kNm) = Braking Force (kN) \times Effective Disc Radius (m)

where Effective Disc Radius (m) = Actual Disc Radius (m) $- 0.110$

Spares

A spare set of brake pads should be kept in a dry place where there is no chance of oil pollution.

Service

Address all enquiries regarding this equipment to your Twiflex agent or direct to Twiflex Couplings Limited.

Agent