

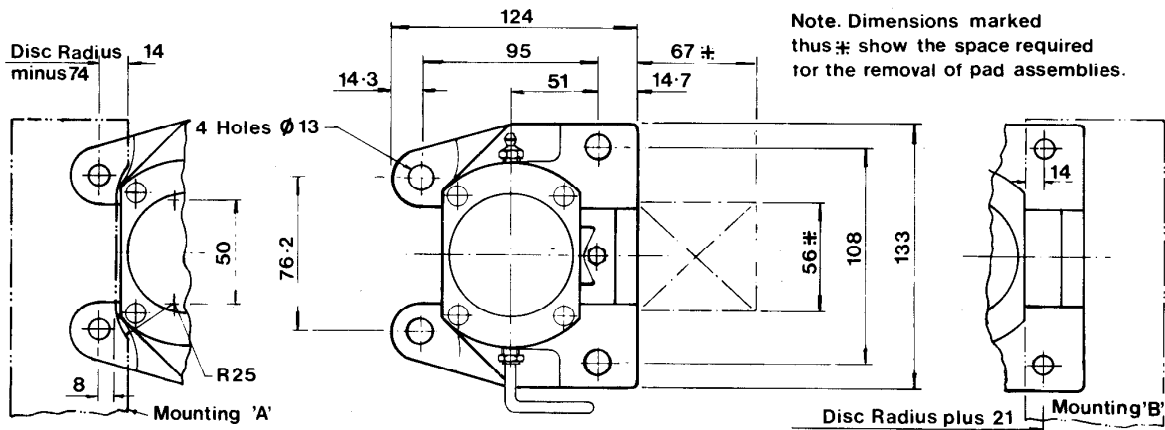
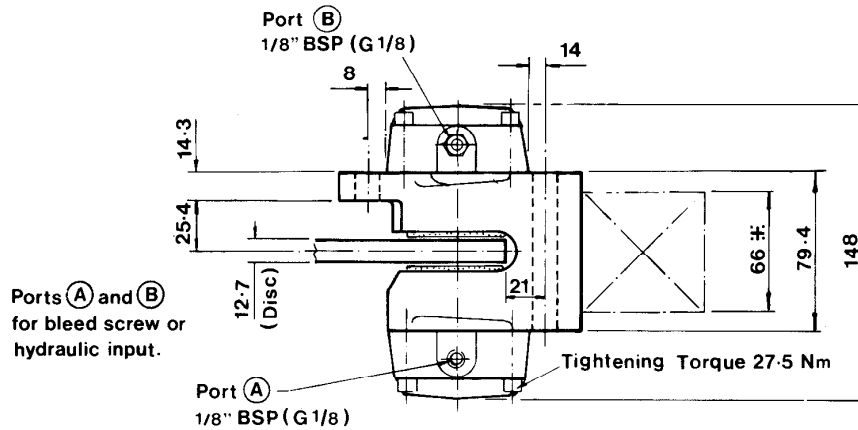
DISC BRAKE CALIPER TYPE: CE/2 HYDRAULICALLY APPLIED

DB 2009

Issue 7

Date: Feb 1988

See Publication Ref. M152 for Installation, Operation and Maintenance.



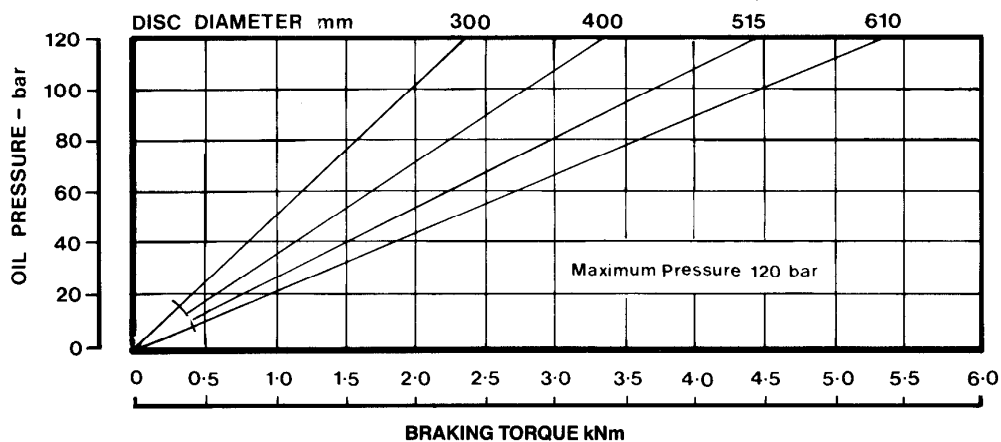
Performance Data:

*Braking Force; 19.6 kN at 120 bar oil pressure (normal maximum working pressure).

Braking Torque (kNm) = Braking Force (kN) * Effective Disc Radius (m).

where Effective Disc Radius (m) = Actual Disc Radius (m) - 0.030.

The above Braking Force figure is based on the standard pad friction coefficient $\mu=0.4$.



1 kNm = 737.6 lbf-ft 1 bar = 14.5 psi

The ratings shown on the above graph are based on fully bedded-in pads.

IMPORTANT. This caliper must only be used with MINERAL OIL BASED HYDRAULIC FLUID



Distribuidor para España:

FU IBERICA, S. L.

Trafalgar, 4, planta 5

Telf. 268 18 33 - Fax: 268 32 92

08010 BARCELONA