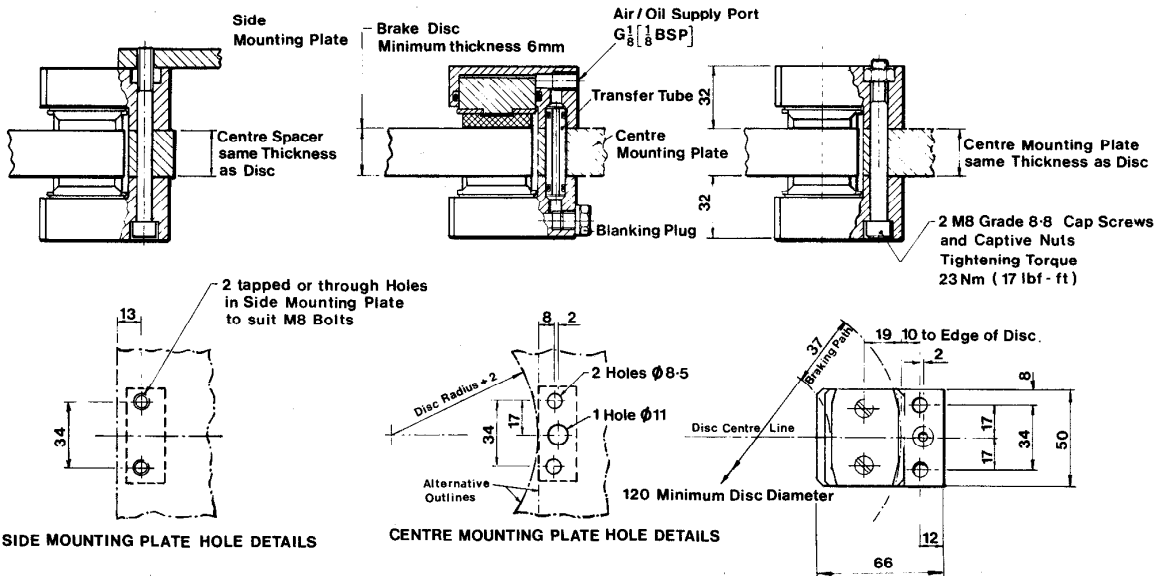


# DISC BRAKE CALIPER TYPE: T2 AIR OR HYDRAULICALLY APPLIED

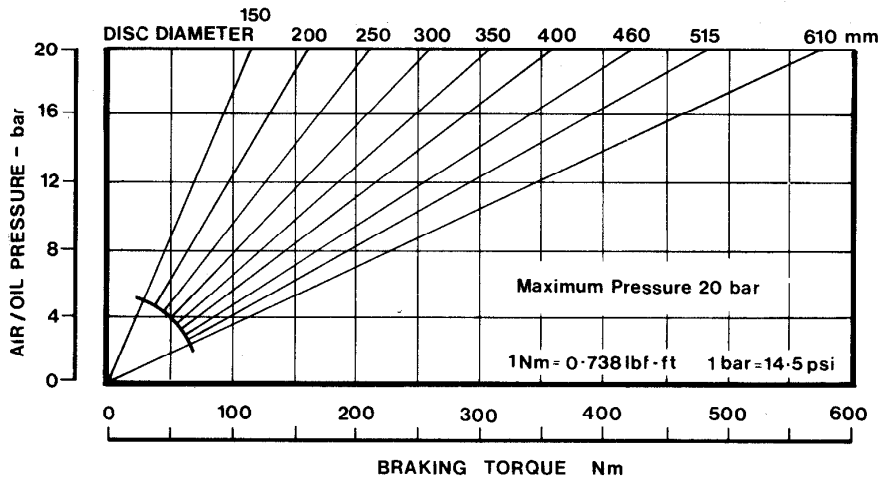
## DB 3028

Issue: 2    Date: Dec 1989



**Performance Data:**

Maximum Braking Force: 2 kN at 20 bar air or oil pressure.  
 Braking Force is defined as the Tangential Force acting at the Effective Disc Radius.  
 Braking Torque (Nm) = Braking Force (N) × Effective Disc Radius (m)  
 where Effective Disc Radius (m) = Actual Disc Radius (m) — 0.019.



The ratings shown on the above graph are based on fully bedded-in pads.

**Technical Data:**

Weight — 0.75 kg (excluding mounting bolts).  
 Pad dimensions — 35 × 50 × 8mm thick (when new).  
 Pad friction coefficient —  $\mu = 0.4$  (asbestos free material).  
 Pad wear allowance — 4mm.  
 Total pad area — 34cm<sup>2</sup>.  
 Hydraulic fluid (mineral) — Shell Tellus 37, Castrol Hyspin AWS 32 or equivalent.  
 Initial oil filling varies from 2ml (new) to 12ml when pads are fully worn.  
 Oil displacement per 1mm stroke is 3ml per two caliper halves.



Distribuidor para España:  
**FU IBERICA, S.L.**

Trafalgar, 4, planta 5  
 Tel. 268 18 33 - Fax. 268 32 92  
 08010 BARCELONA