

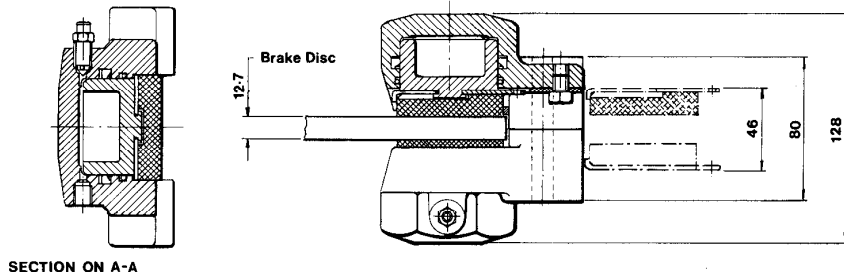
DISC BRAKE CALIPER TYPE: T20

HYDRAULICALLY APPLIED

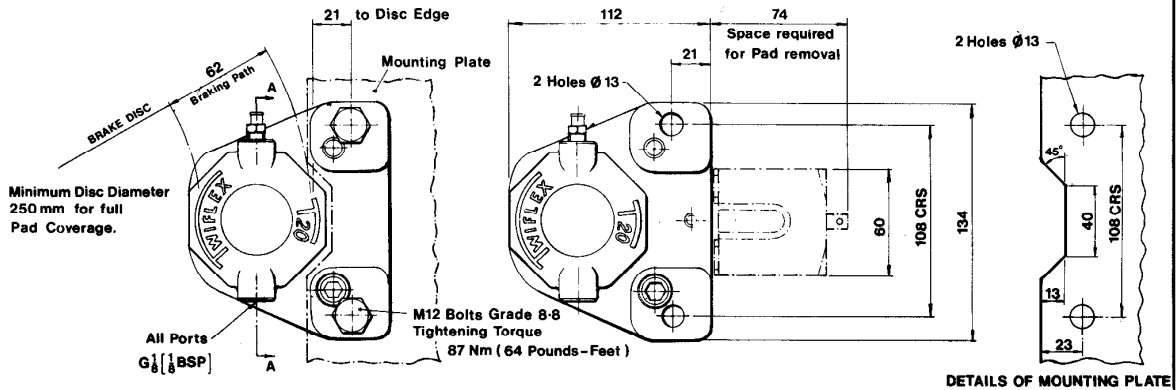
DB 2016

Issue: 1

Date: Feb. 1987



SECTION ON A-A



DETAILS OF MOUNTING PLATE

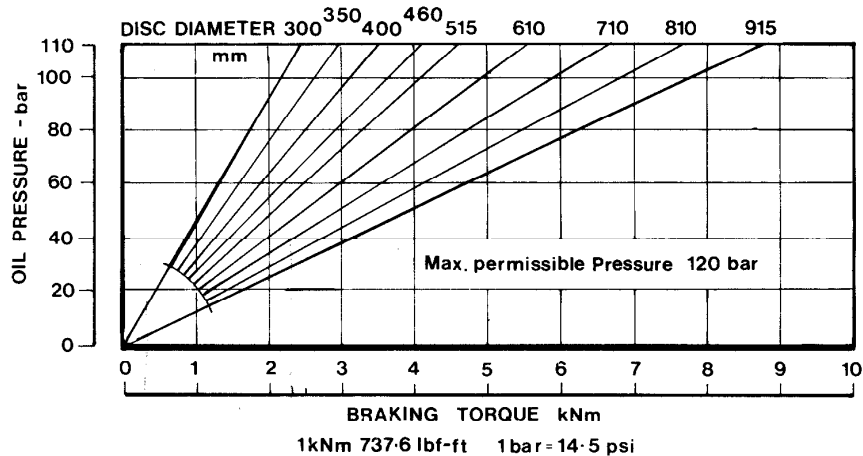
Performance Data:

*Braking Force; 20kN at 110 bar oil pressure (normal max. working pressure).

Braking Torque (kNm) = Braking Force (kN) × Effective Disc Radius (m).

where Effective Disc Radius (m) = Actual Disc Radius (m) - 0.032.

The above Braking Force figure is based on the standard pad friction coefficient $\mu=0.4$.



Brake Performance of T20 Disc Brake Caliper

The ratings shown on the above graph are based on fully bedded-in pads.



Distribuidor para España:

FU IBERICA, S.L.

Trafalgar, 4, planta 5

Tel. 268 18 33 - Fax. 268 32 92

08010 BARCELONA