

T40 DISC BRAKE CALIPER

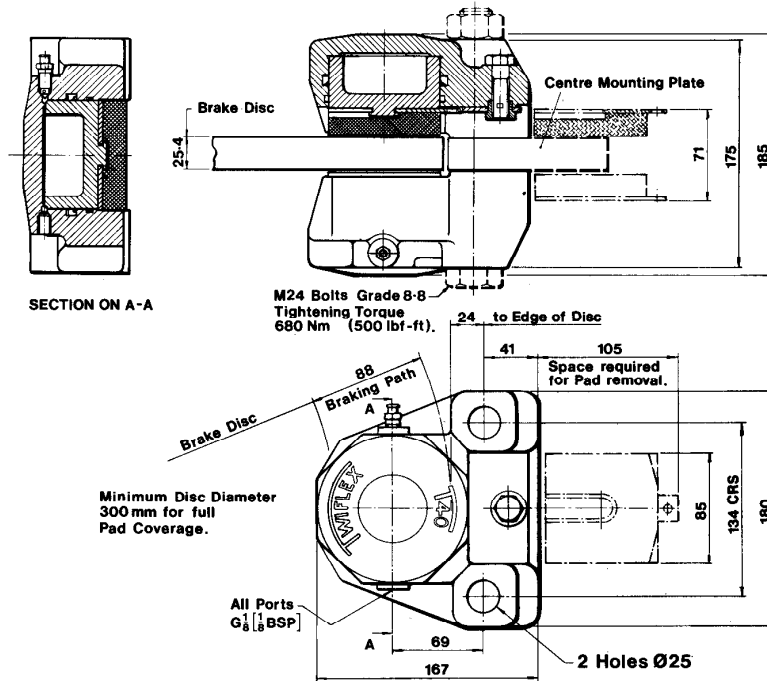
HYDRAULICALLY APPLIED

DB 2017

Issue 2

Date February 1991

Nominal dimensions given. For specific dimensions please contact Twiflex Limited.

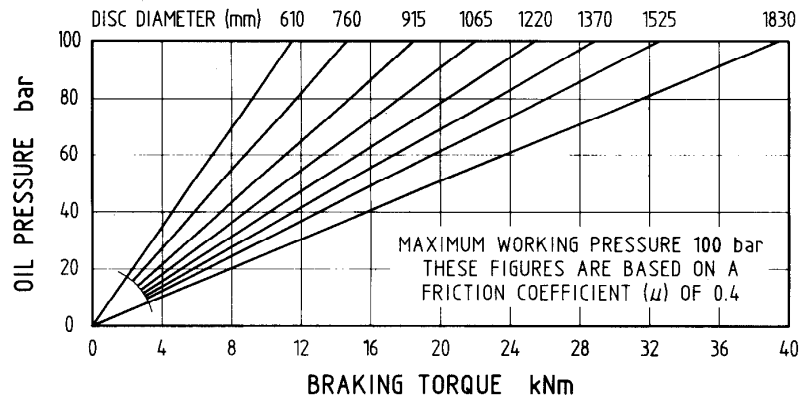


Braking Force. 45kN at 100 bar oil pressure
(normal maximum working pressure).

Braking Force is defined as the Tangential Force acting on the brake disc at the Effective Disc Radius.

Braking Torque (Nm) = Braking Force (N) x Effective Disc Radius (m)

Where Effective Brake Radius = Actual Disc Radius - 0.045.



These are typical performance figures for fully bedded and conditioned brake pads. For bedding-in and conditioning see publication M1060. When used with standard Twiflex brake discs an appropriate service factor should be applied when designing the braking system, and in case of brakes used for holding duties or in wet conditions this should be not less than 2.0.



Distribuidor para España:

"F.U." IBERICA, S.L.

TRAFALGAR, 4, 5° B - 08010 BARCELONA

TEL. 93 268 18 33 - FAX 93 268 32 92

Internet: www.fuiberica.com - Email: fuiberica@fuiberica.com