

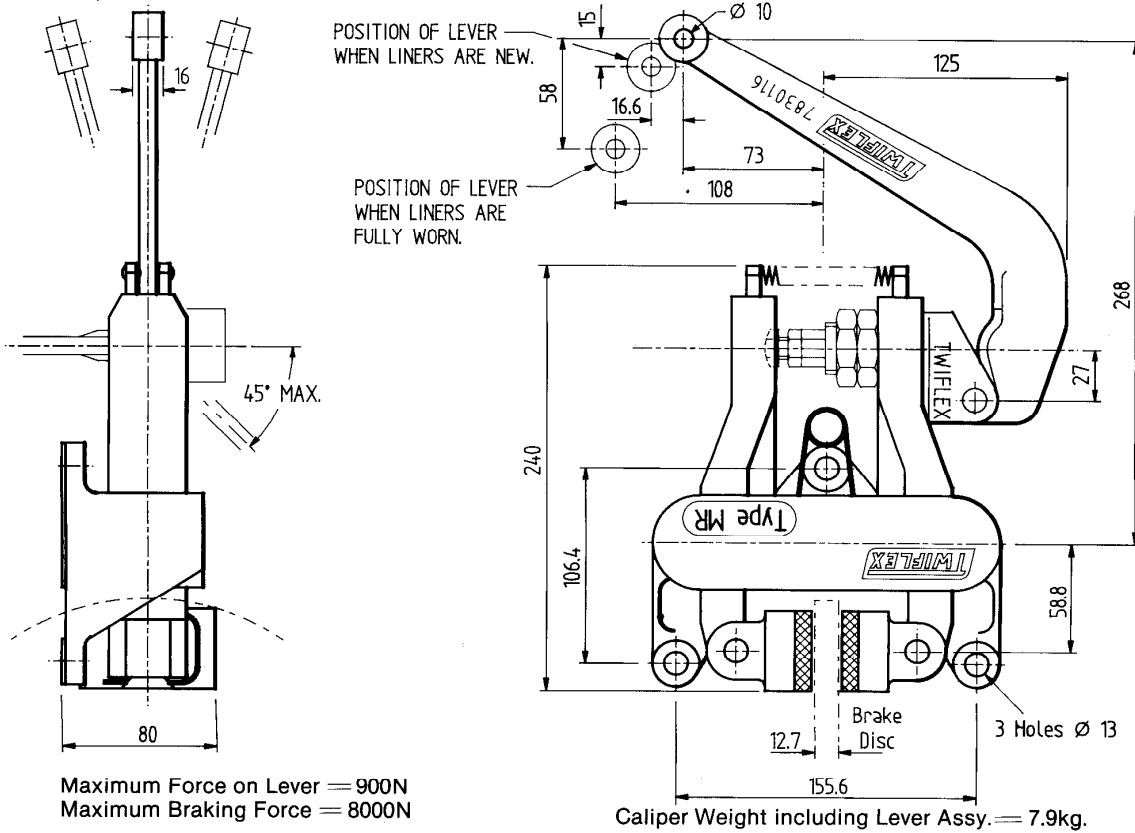
# MRH DISC BRAKE CALIPER

## MECHANICALLY APPLIED-LEVER OPERATED

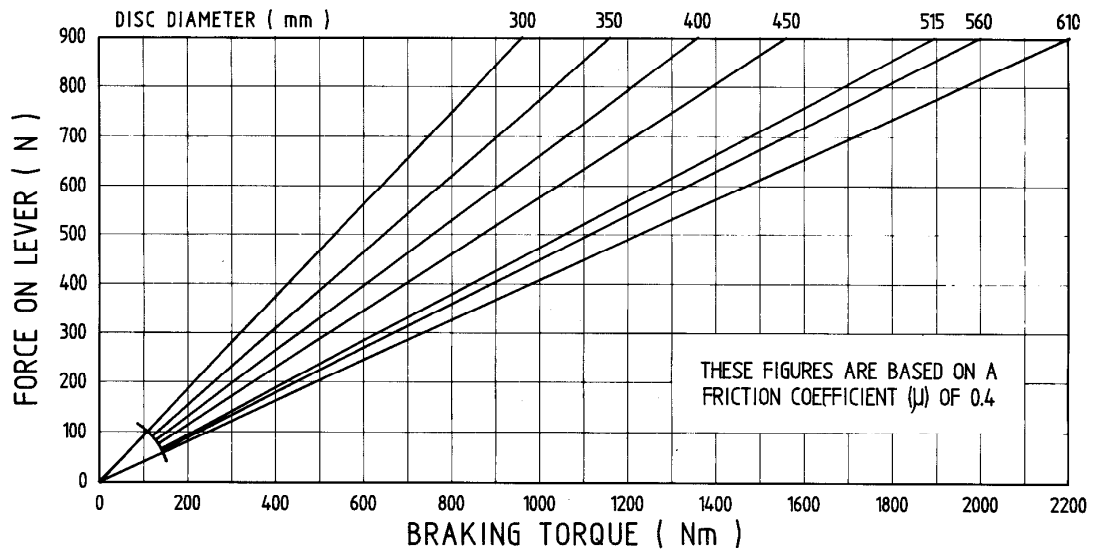
# DB 1005

Issue 6    Date February 1991

Nominal dimensions given. For specific dimensions please contact Twiflex Limited.  
For caliper dimensions see DB 3017.



Maximum Force on Lever = 900N  
Maximum Braking Force = 8000N



The ratings shown on the above graph are based on fully bedded and conditioned brake pads. For bedding-in and conditioning procedures see Publication M1060.  
Braking Force is defined as the Tangential Force acting on the brake disc at the Effective Disc Radius.  
Braking Torque (Nm) = Braking Force (N) x Effective Disc Radius (m)  
where Effective Disc Radius = Actual Disc Radius - 0.03



Distribuidor para España:  
**FU IBERICA, S.L.**

Trafalgar, 4, planta 5  
Tel. 268 18 33 - Fax. 268 32 92  
08010 BARCELONA