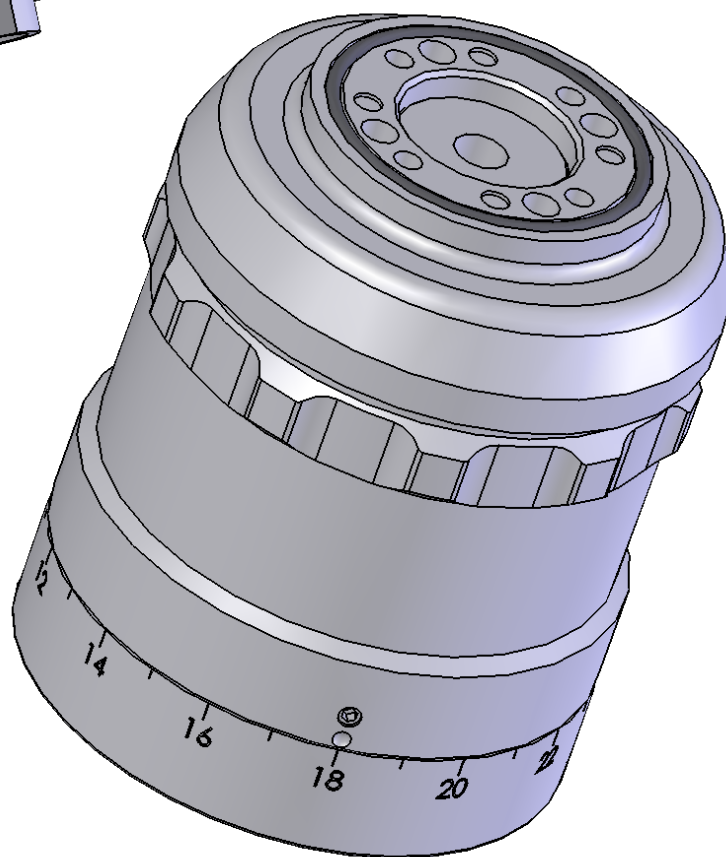
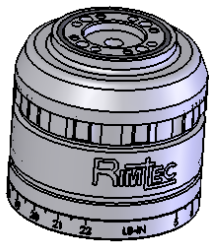


## *RCC800 SERIES MAGNETIC CAPPING CLUTCHES*



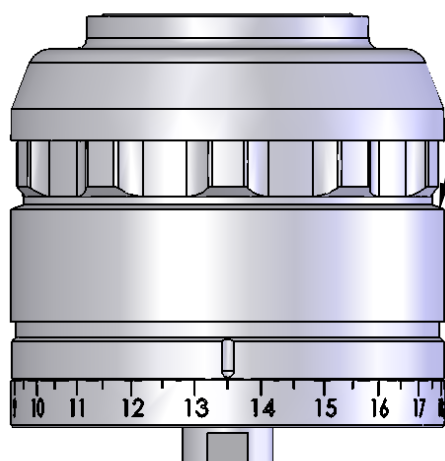
## **RCC800 SERIES CAPPING CLUTCHES**



### **Realize the Benefits**

- 80mm Diameter Housing
- Stainless steel jacketed Hysteresis magnet set.
- Very smooth disengagement.
- High accuracy and Durable.
- Very low inertia to run different line speeds without adjusting torque.
- Stainless steel construction.
- Fully sealed for wash down.
- Toolless torque adjuster or set screw lock option
- Torque adjustment is linear.
- Complete adjustable spring and pushing rod version available.
- Custom engraving available.
- Universally adaptable to most capping machines.
- Competitive Pricing.
- Worldwide distributor support network.

### Toolless or Set Screw Lock Options



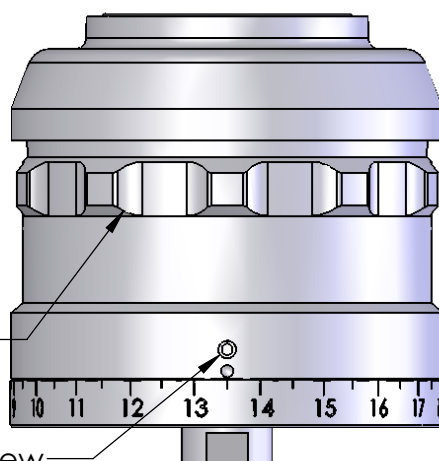
#### **Toolless Locking**

Choose toolless locking when making changes to the torque setting frequently, and a positive lock is required.

Push down and rotate spring loaded adjuster to set torque. Release to lock.

Rotate adjuster to set torque, and tighten set screw to lock.

Set Screw

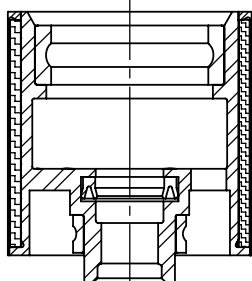


#### **Set Screw Locking**

(Adjuster will hold its position without locking the set screw for most applications.)

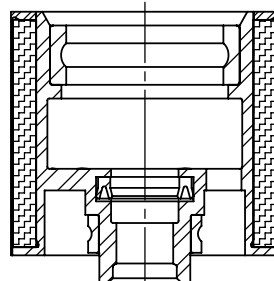
### Low or Standard Capping Inertia Options

Capping inertia is the portion of the clutch that rotates with the cap and stops with the cap. It can influence performance depending on the overall system arrangement.



#### **Low Capping Inertia**

Developed for high speed beverage capping. Delivers very consistent removal torques throughout a wide speed range when coupled with a light weight chuck.



#### **Standard Capping Inertia**

Higher torque ranges.  
(Addition of a bottom adapter adds to the inertia.)

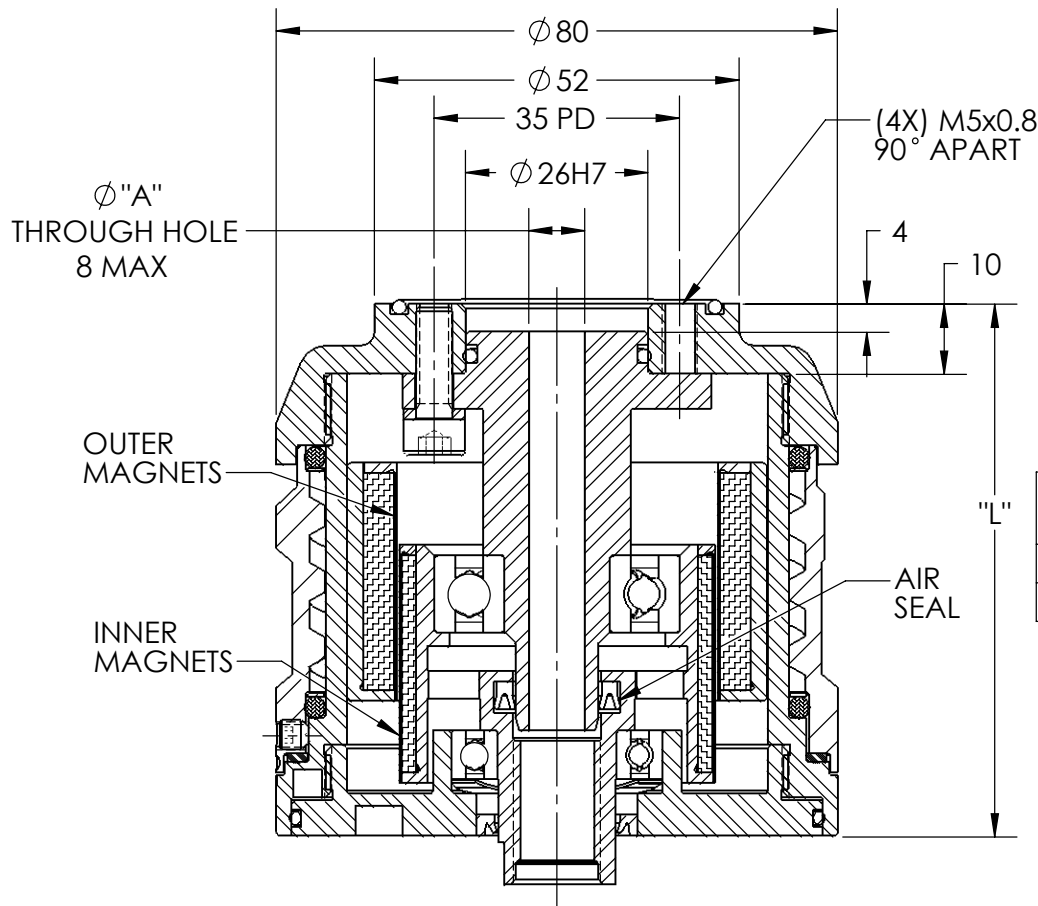
## SPECIFICATIONS

MODEL	TORQUE RANGE	STAINLESS STEEL MAGNET JACKETS	BOTTOM CONNECTION	CAPPING INERTIA (g*cm <sup>2</sup> )	CAPPING WEIGHT (g)	TOTAL INERTIA <sup>①</sup> (g*cm <sup>2</sup> )	TOTAL WEIGHT <sup>①</sup> (Kg)
<b>800.LI.C2</b>	5 TO 22 LBIN 0.6 to 2.4 Nm	INNER AND OUTER	M12 ②	680	215	1560	1.89
			M24	720	240	15600	1.91
			M35	820	260	15640	1.91
<b>801.LI.C2</b>	6 TO 30 LBIN 0.7 to 3.3 Nm	INNER AND OUTER	M12 ②	880	260	20260	2.38
			M24	920	290	20300	2.40
			M35	1020	310	20330	2.40
<b>801.SI.C2</b>	7 TO 34 LBIN 0.8 to 3.8 Nm	INNER AND OUTER	M12 ②	1510	380	20240	2.38
			M24	1560	410	20270	2.40
			M35	1650	430	20310	2.40
<b>801.SI.C1</b>	8 TO 38 LBIN 0.9 to 4.3 Nm	INNER ONLY	M12 ②	1510	380	20100	2.36
			M24	1560	410	20120	2.38
			M35	1650	430	20160	2.38

1) Total weight and inertias are for set screw locking. Toolless locking weighs slightly more.

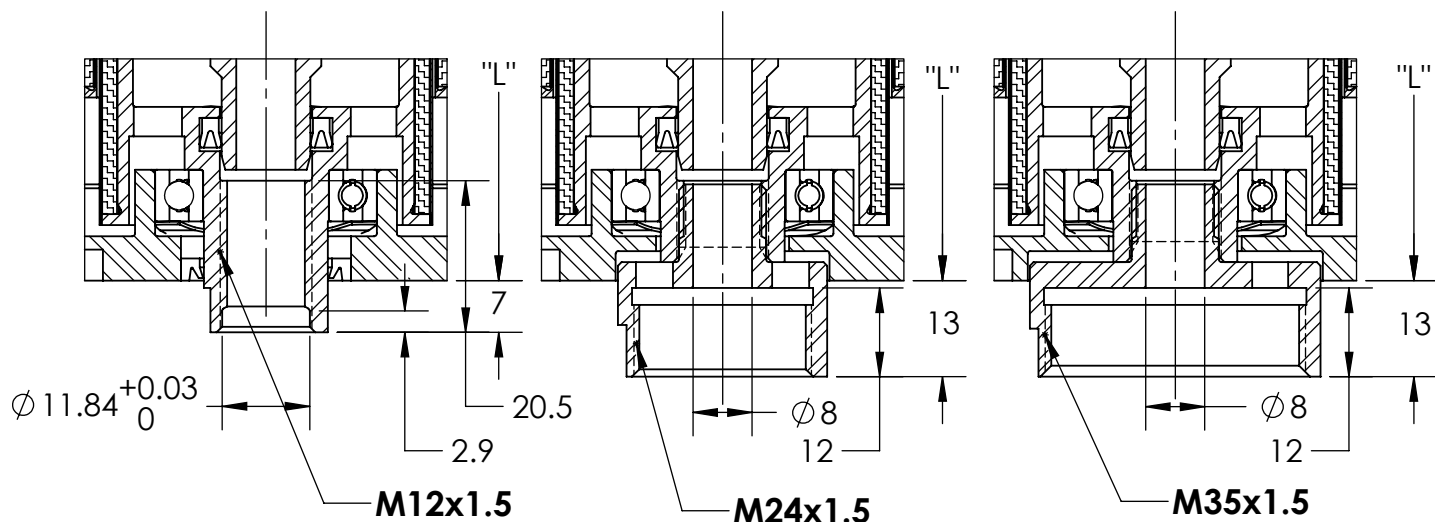
2) Designed for use with pressurized air (90 psi max (6.2 bar)).

Dimensions are in millimeters.



MODEL	LENGTH "L"
800	76
801	97

## RCC800 SERIES CAPPING CLUTCHES



**STANDARD BOTTOM CONNECTIONS**  
Other Connections Available Upon Request

## ORDERING CODE

**801.SI.C1 . M12 . T . 6 . LBIN . ZZLOGO**

Model Number \_\_\_\_\_

800.LI.C2: 76 mm long, Low Inertia, Two Magnet Covers.

801.LI.C2: 97 mm long, Low Inertia, Two Magnet Covers.

801.SI.C2: 97 mm long, Standard Inertia, Two Magnet Covers.

801.SI.C1: 97 mm long, Standard Inertia, One Magnet Cover.

Bottom Connection \_\_\_\_\_

M12: M12x1.5-6H

M24: M24x1.5-6H

M35: M35x1.5-6H

Adjuster Locking \_\_\_\_\_

S: Set Screw

T: Toolless

Through Hole Diameter "A" \_\_\_\_\_

8 mm maximum.

Standard Tolerance is +0.13 / 0.

Preferred sizes: 0 (Solid), and 6.35 mm.

Torque Scale Units \_\_\_\_\_

LBIN: Pound Inches

NM: Newton Meters.

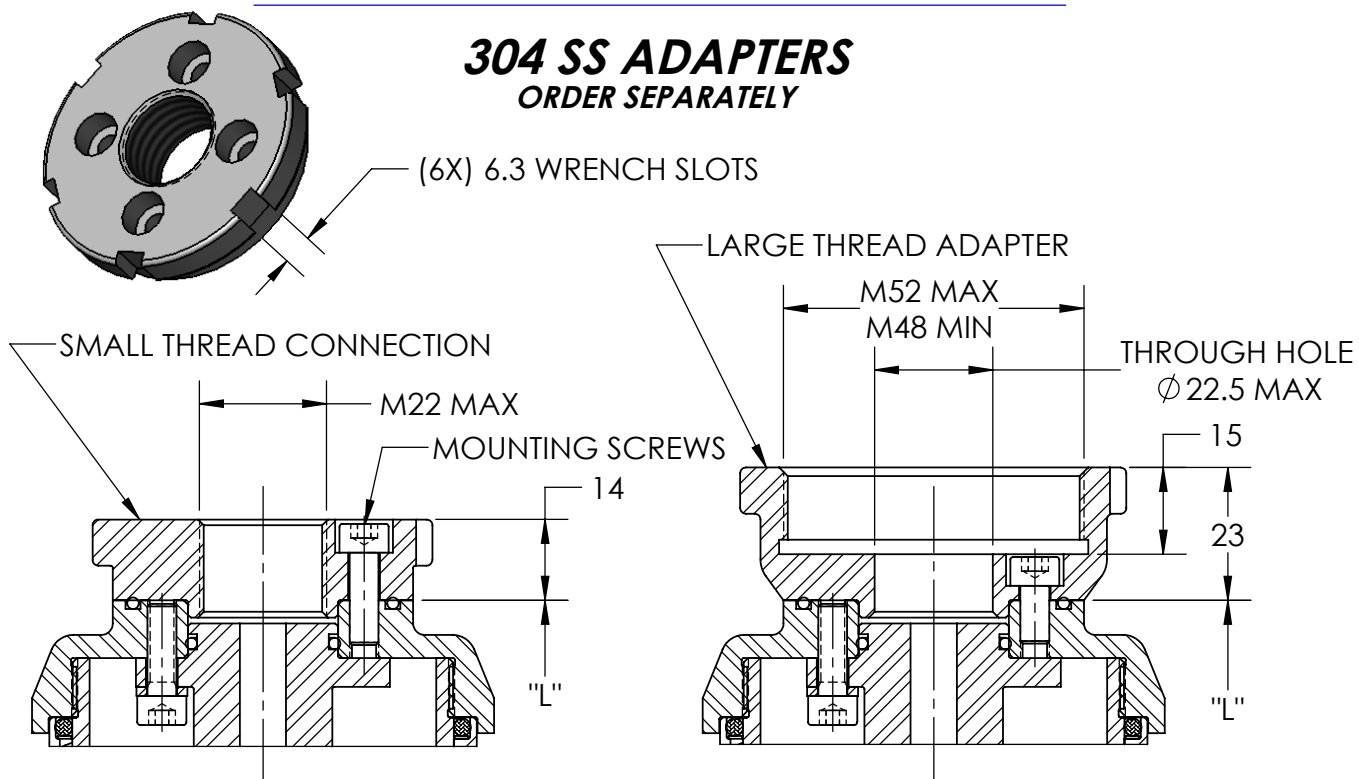
Custom Logo \_\_\_\_\_

Per customer's specification.

## RCC800 SERIES CAPPING CLUTCHES

### **304 SS ADAPTERS**

ORDER SEPARATELY



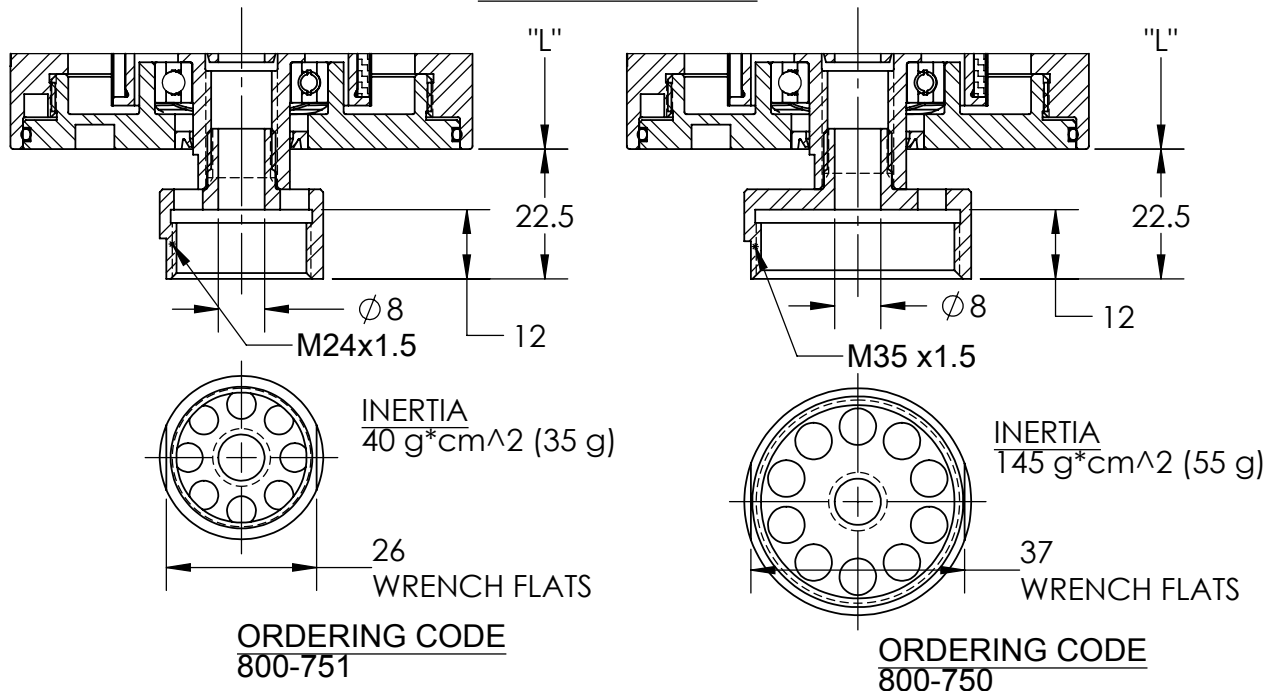
#### ORDERING CODE

800-1200- THREAD SIZE  
(INCLUDES MOUNTING SCREWS)

#### ORDERING CODE

800-1300- THREAD SIZE- THROUGH HOLE  
(INCLUDES MOUNTING SCREWS)

### TOP ADAPTERS



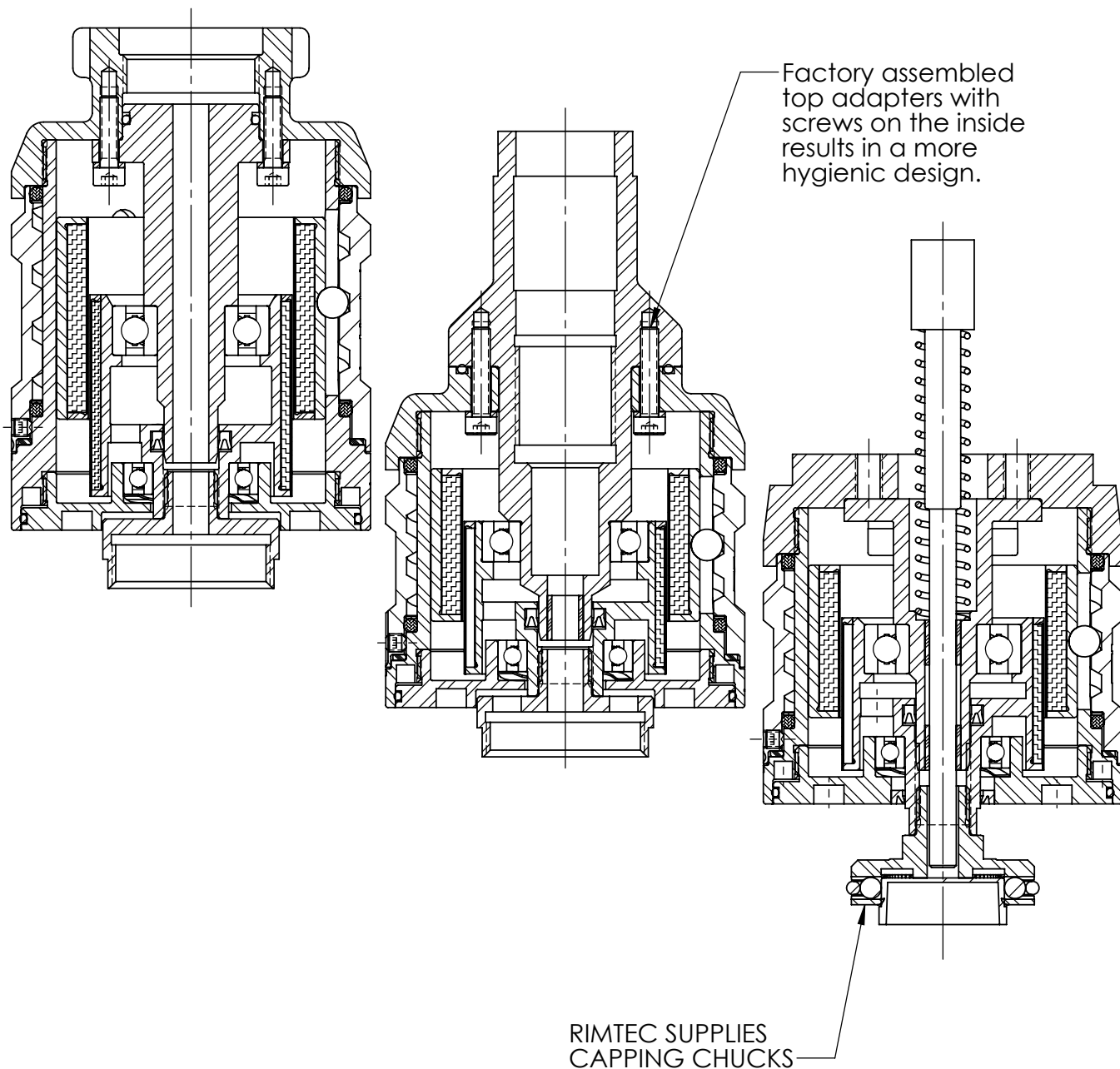
**BOTTOM ADAPTERS**  
FOR USE WITH M12 BOTTOM CONNECTION ONLY

## **RCC800 SERIES CAPPING CLUTCHES**

### **LET RIMTEC DESIGN A CONFIGURATION THAT MEETS YOUR REQUIREMENTS.**

Rimtec will configure the RCC800 for a new application or to replace your current clutch. Contact Engineering for more details. Bottom and top connections, overall length, and through hole requirements are needed.

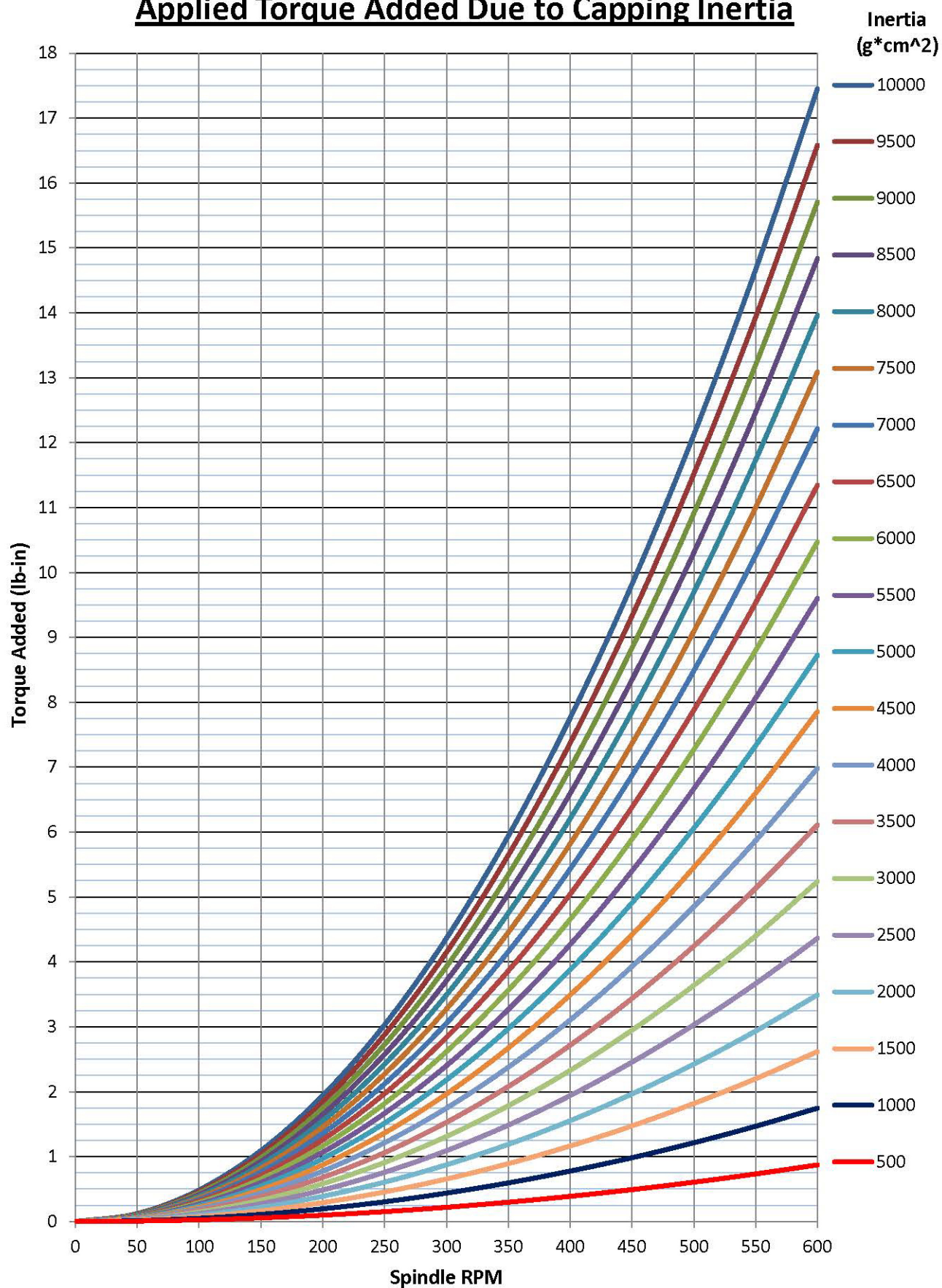
Rimtec will manufacture top and bottom adapters with connections per your specifications.





# ANEXO

## Applied Torque Added Due to Capping Inertia



# ANEXO

OEM versus RIMTEC LOW INERTIA CLUTCH

Cap Removal Torques (Target is under 15 lb-in at 545 rpm)

