

The Semiflex® series



Standard F series

Symbiosis of performance and compact design

Bore diameter up to 120 mm
Torque (T_{KN}) 44 Nm to 7.040 Nm



Compact Plus C series

For extremely axially limited space
Bore diameter up to 100 mm
Torque (T_{KN}) 69 Nm to 7.040 Nm



Dynamic D series

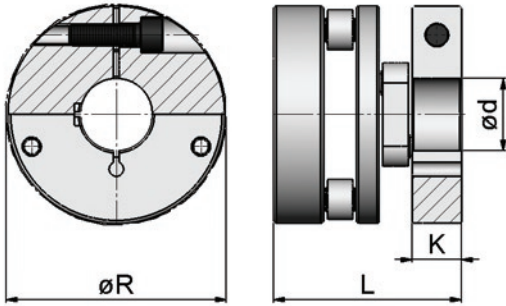
The light-weight aluminum series
Bore diameter up to 35 mm
Torque (T_{KN}) 40 Nm to 180 Nm

Semiflex®

Semiflex® is a high-precision coupling in a compact design and with no restoring forces. Semiflex® offers large radial misalignment capacity in a very small envelope. Semiflex® is, by design, free of restoring forces. For highly dynamic applications, Semiflex® is also available in an aluminum series.

Standard F series

A symbiosis of performance, compact design and generous misalignment capacity.



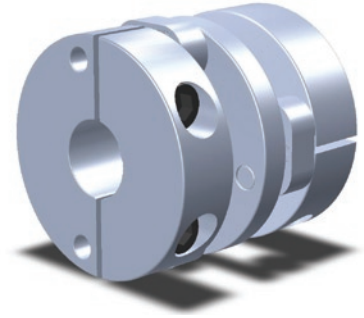
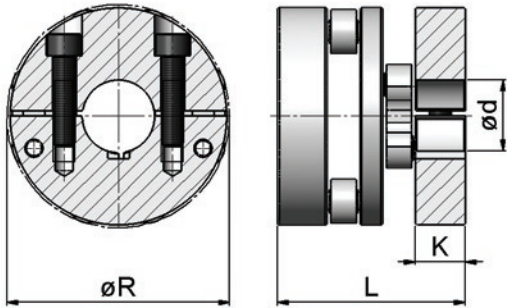
Hub version 1: clamp hub

	T_{KN} (Nm)	$T_{K_{max}}$ (Nm)	n_{max} (1/min)	ΔK_r (mm)	ΔK_s (mm)	ΔK_w (°)	C_t (kNm/rad)	J (kg cm ²)	m (kg)	$\varnothing R$ (mm)	L (mm)	K (mm)	$\varnothing d_{max}$ (mm)
F 45	44	71	5.000	1	1	1	8	2	0,5	52	60	16	22
F 70	69	112	4.200	1	1	1	13	8,4	1	72	68	20	35
F 230	230	460	2.900	1,6	1	1	53	34	2,7	94	104	27,5	44
F 265	265	530	2.700	1,6	1	1	61	50,1	3,2	104	104	27,5	50
F 320	316	635	2.500	3	1	1	73	100,4	4,1	124	104	27,5	70
F 440	437	920	2.300	2,4	1	1	105	74	5	100	143	38	45
F 575	575	1.220	2.100	2,4	1	1	140	147	6,5	120	143	38	60

Order Example 1: F 45.11 Ø16 Ø16 Order Example 2: F 320.11 Ø38 Ø40

F 320	11	Ø38 Ø40
Type Semiflex® Standard F 320	both sides clamp hub	bore diameters

To ensure the correct selection of the Semiflex® please use the TD Calculator of the column Semiflex® or please use our selection procedure and legend area to download the required information.



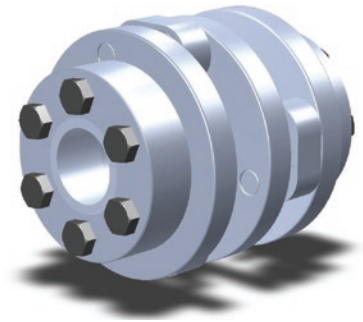
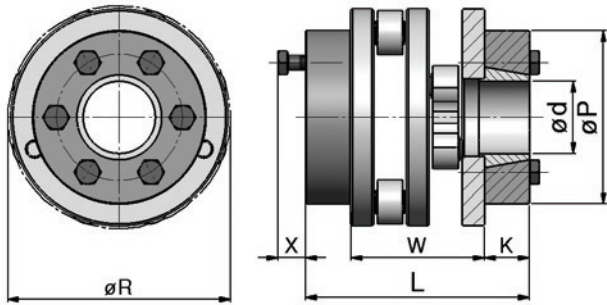
Hub version 2: split-clamp hub

	T_{KN} (Nm)	$T_{K\ max}$ (Nm)	$n_{\ max}$ (1/min)	ΔK_r (mm)	ΔK_a (mm)	ΔK_w (°)	C_T (kNm/rad)	J (kg cm ²)	m (kg)	ØR (mm)	L (mm)	K (mm)	Ød _{max} (mm)
F 70	69	112	4.200	1	1	1	13	8,4	1	72	68	20	25
F 230	230	460	2.900	1,6	1	1	53	34	2,7	94	104	27,5	30
F 265	265	530	2.700	1,6	1	1	61	50,1	3,2	104	104	27,5	35
F 320	316	635	2.500	3	1	1	73	100,4	4,1	124	104	27,5	45
F 575	575	1.220	2.100	2,4	1	1	140	147	6,5	120	143	38	35

Order Example 1: F 70.22 Ø20 Ø25 Order Example 2: F 320.22 Ø38 Ø40

F 320	22	Ø38 Ø40
Type Semiflex® Standard F 320	both sides split-clamp hub	bore diameters

To ensure the correct selection of the Semiflex® please use the TD Calculator of the column Semiflex® or please use our selection procedure and legend area to download the required information.



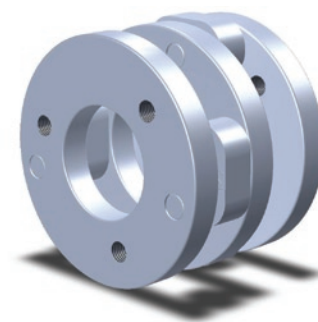
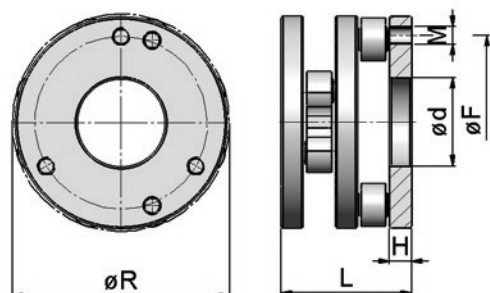
Hub version 3: locking-assembly

	T_{KN} (Nm)	$T_{K_{max}}$ (Nm)	n_{max} (1/min)	ΔK_r (mm)	ΔK_a (mm)	ΔK_w (°)	C_T (kNm/rad)	J (kg cm ²)	m (kg)	ØR (mm)	L (mm)	X (mm)	W (mm)	K (mm)	ØP (mm)	standard bore diameters (mm)
F 230	230	460	2.900	1,6	1	1	53	32,4	3,1	94	116	15	74	21	76	25, 28, 30
F 265	265	530	2.700	1,6	1	1	61	37,1	3,2	104	116	15	74	19	66	25, 28, 30
F 320	316	635	2.500	3	1	1	73	77,1	4,5	124	116	15	74	21	76	25, 28, 30
F 440	437	920	2.300	2,4	1	1	105	79	5,6	100	116	15	101	19	66	25, 28, 30
F 575	575	1.220	2.100	2,4	1	1	140	126	6,8	120	151	17	101	25	96	30, 32, 35, 40
F 725	725	1.530	2.000	2,4	1	1	175	248	9,9	140	161	23	101	30	115	42, 45, 50
F 830	828	1.755	1.900	4	1	1	201	360	11,6	160	161	23	101	30	115	42, 45, 50
F 1120	1.120	2.730	1.700	3	1	0,8	313	295	12	143	188	17	134	30	115	30, 35, 40
F 1370	1.370	3.340	1.600	3	1	0,8	383	505	15,5	163	194	23	134	30	115	42, 45, 50
F 1580	1.580	3.845	1.500	4	1	0,8	441	795	19	183	202	24	134	34	120	50, 55, 60
F 2010	2.010	4.915	1.500	3,2	1	0,7	563	610	18	163	202	24	155	34	120	50, 55, 60
F 2390	2.390	5.855	1.400	3,2	1	0,7	671	1.110	25,5	183	235	30	155	40	155	60, 65, 70
F 2700	2.700	6.600	1.300	4,4	1	0,5	756	1.540	30	203	235	30	155	40	155	60, 65, 70
F 4220	4.220	11.300	1.200	4	2	0,5	1.295	1.725	33	200	276	30	196	40	155	60, 65, 70
F 5620	5.620	15.050	1.100	5,4	2	0,5	1.725	3.975	49	250	284	31	196	44	170	70, 75, 80
F 7040	7.040	18.840	1.000	6,6	2	0,3	2.159	7.700	66	300	296	30	196	50	185	80, 85, 90

Order Example 1: F 70.33 Ø20 Ø25 Order Example 2: F 320.33 Ø30 Ø30

F 320	33	Ø30 Ø30
Type Semiflex® Standard F 320	both sides locking-assembly	bore diameters

To ensure the correct selection of the Semiflex® please use the TD Calculator of the column Semiflex® or please use our selection procedure and legend area to download the required information.



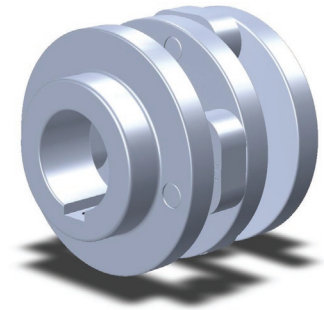
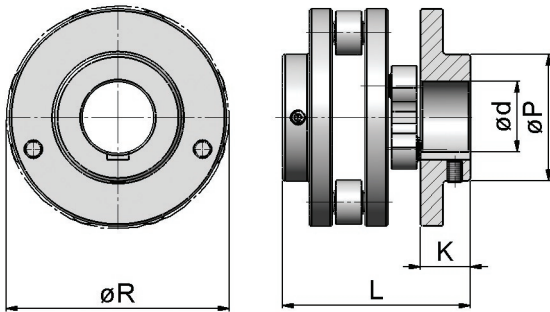
Hub version 5: flange-mounting

	T_{KN} (Nm)	TK_{max} (Nm)	n_{max} (1/min)	ΔK_r (mm)	ΔK_s (mm)	ΔK_w (°)	C_r (kNm/rad)	J (kg cm ²)	m (kg)	$\emptyset R$ (mm)	H (mm)	$\emptyset d$ (mm)	L (mm)	$\emptyset F$ (mm)	M
F 45	44	71	5.000	1	1	1	8	1	0,4	52	8	22	44	35	3xM6
F 70	69	112	4.200	1	1	1	13	5	0,6	72	8	25	44	56	3xM6
F 230	230	460	2.900	1,6	1	1	53	20	1,6	94	12,5	45	74	70	3xM10
F 265	265	530	2.700	1,6	1	1	61	31	2	104	12,5	45	74	70	3xM10
F 320	316	635	2.500	3	1	1	73	64	2,9	124	12,5	50	74	98	3xM10
F 440	437	920	2.300	2,4	1	1	105	45	3,3	100	17	40	101	70	3xM16
F 575	575	1.220	2.100	2,4	1	1	140	90	4,3	120	17	50	101	90	3xM16
F 725	725	1.530	2.000	2,4	1	1	175	165	5,8	140	17	50	101	110	3xM16
F 830	828	1.755	1.900	4	1	1	201	271	7,1	160	17	60	101	120	3xM16
F 1120	1.120	2.730	1.700	3	1	0,8	313	249	9,1	143	26	55	134	100	3xM20
F 1370	1.370	3.340	1.600	3	1	0,8	383	401	11	163	26	60	134	120	3xM20
F 1580	1.580	3.845	1.500	4	1	0,8	441	656	14	183	26	70	134	140	3xM20
F 2010	2.010	4.915	1.500	3,2	1	0,7	563	484	14	163	31	60	155	115	5xM20
F 2390	2.390	5.855	1.400	3,2	1	0,7	671	795	17	183	31	70	155	135	5xM20
F 2700	2.700	6.600	1.300	4,4	1	0,5	756	1.214	21	203	31	80	155	150	5xM20
F 4220	4.220	11.300	1.200	4	2	0,5	1.295	1.339	23	200	33	80	196	150	5xM24
F 5620	5.620	15.050	1.100	5,4	2	0,5	1.725	3.209	34	250	33	100	196	200	5xM24
F 7040	7.040	18.840	1.000	6,6	2	0,3	2.159	6.238	42	300	33	160	196	250	5xM24

Order Example 1: F 45.55 Order Example 2: F 2010.55

F 2010	55
Type Semiflex® Standard F 2010	both sides flange-mounting

To ensure the correct selection of the Semiflex® please use the TD Calculator of the column Semiflex® or please use our selection procedure and legend area to download the required information.



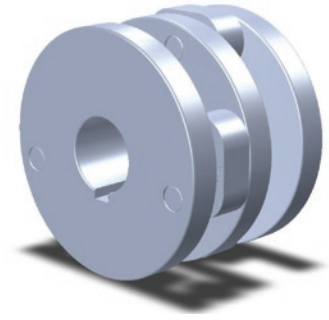
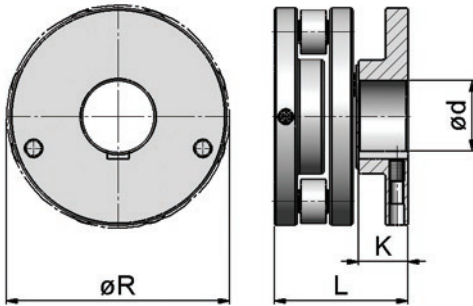
Hub version 6: standard hub

	T_{KN} (Nm)	T_{Kmax} (Nm)	n_{max} (1/min)	ΔK_r (mm)	ΔK_a (mm)	ΔK_w (°)	C_T (kNm/rad)	J (kg cm ²)	m (kg)	$\varnothing R$ (mm)	L (mm)	$\varnothing P$ (mm)	K (mm)	$\varnothing d_{max}$ (mm)
F 45	44	71	5.000	1	1	1	8	2	0,5	52	60	50	16	26
F 70	69	112	4.200	1	1	1	13	8,4	1	72	68	70	20	40
F 230	230	460	2.900	1,6	1	1	53	23,6	2,2	94	104	56	27,5	35
F 265	265	530	2.700	1,6	1	1	61	34,7	2,6	104	104	65	27,5	40
F 320	316	635	2.500	3	1	1	73	70,4	3,6	124	104	70	27,5	45
F 440	437	920	2.300	2,4	1	1	105	50	4	100	143	53	38	32
F 575	575	1.220	2.100	2,4	1	1	140	99	5,2	120	143	70	38	45
F 725	725	1.530	2.000	2,4	1	1	175	183	7	140	149	85	41	55
F 830	828	1.755	1.900	4	1	1	201	303	9,1	160	163	90	48	60
F 1120	1.120	2.730	1.700	3	1	0,8	313	270	10,5	143	162	77	40	45
F 1370	1.370	3.340	1.600	3	1	0,8	383	435	13	163	170	90	44	60
F1580	1.580	3.845	1.500	4	1	0,8	441	710	16	183	182	90	50	60
F 2010	2.010	4.915	1.500	3,2	1	0,7	563	520	15,5	163	185	85	46	55
F 2390	2.390	5.855	1.400	3,2	1	0,7	671	850	19	183	195	90	51	60
F 2700	2.700	6.600	1.300	4,4	1	0,5	756	1.280	23,5	203	205	95	56	65
F 4220	4.220	11.300	1.200	4	2	0,5	1.295	1.475	27	200	236	110	53	70
F 5620	5.620	15.050	1.100	5,4	2	0,5	1.725	3.525	41	250	266	120	68	80
F 7040	7.040	18.840	1.000	6,6	2	0,3	2.159	7.350	63	300	322	160	96	100

Order Example 1: F 70.66 $\varnothing 25$ $\varnothing 25$ Order Example 2: F 320.66 $\varnothing 38$ $\varnothing 40$

F 320	66	$\varnothing 38$ $\varnothing 40$
Type Semiflex® Standard F 320	both sides standard hub	bore diameters

To ensure the correct selection of the Semiflex® please use the TD Calculator of the column Semiflex® or please use our selection procedure and legend area to download the required information.



Hub version 7: internal hub

	T_{KN} (Nm)	T_{Kmax} (Nm)	n_{max} (1/min)	ΔK_r (mm)	ΔK_a (mm)	ΔK_w (°)	C_T (kNm/rad)	J (kg cm ²)	m (kg)	$\varnothing R$ (mm)	L (mm)	K (mm)	$\varnothing d_{max}$ (mm)
F 70	69	112	4.200	1	1	1	13	5,1	0,8	72	44	20	25
F 230	230	460	2.900	1,6	1	1	53	22,4	2,1	94	74	27,5	25
F 265	265	530	2.700	1,6	1	1	61	32,4	2,4	104	74	27,5	35
F 320	316	635	2.500	3	1	1	73	68,5	3,4	124	74	27,5	45
F 575	575	1.220	2.100	2,4	1	1	140	95	5	120	101	38	30
F 725	725	1.530	2.000	2,4	1	1	175	173	6,6	140	101	41	45
F 830	828	1.755	1.900	4	1	1	201	291	8,5	160	101	48	60
F 1370	1.370	3.340	1.600	3	1	0,8	383	430	13	163	134	44	40
F 1580	1.580	3.845	1.500	4	1	0,8	441	700	15,5	183	134	50	60
F 2390	2.390	5.855	1.400	3,2	1	0,7	671	840	18,5	183	155	51	60
F 2700	2.700	6.600	1.300	4,4	1	0,5	756	1.280	23	203	155	56	70
F 5620	5.620	15.050	1.100	5,4	2	0,5	1.725	3.500	40	250	196	68	90
F 7040	7.040	18.840	1.000	6,6	2	0,3	2.159	7.200	66	300	196	96	120

Order Example 1: F 70.77 Ø20 Ø20 Order Example 2: F 320.77 Ø30 Ø35

F 320	77	Ø30 Ø35
Type Semiflex® Standard F 320	both sides internal hub	bore diameters

To ensure the correct selection of the Semiflex® please use the TD Calculator of the column Semiflex® or please use our selection procedure and legend area to download the required information.

