



PNEUMOMECHANICAL - model PNM

Industry: paper & film converting

Applications: shaftless unwinders and rewinders



Our pneumomechanical core chucks ensure durability, quality and toughness.

Due to their high versatility they can be used in **different industries and fields**, i.e. the production of the corrugated cardboard, **paper and film converting, nonwoven production and/or converting, medical, labelling, on unwinders and/or on shaftless slitter/rewinders.**

The dimensions are reduced to the minimum to maintain the maximum distances between the arms of the machines and to guarantee versatility with different works and reels' dimensions.

Adaptable to different diameters using their **aluminum adapters**, they provide hygiene and durability.

Jaws with vulcanized rubber surface are available as well for an optimal grip on PVC cores.

They can be provided in two different versions:

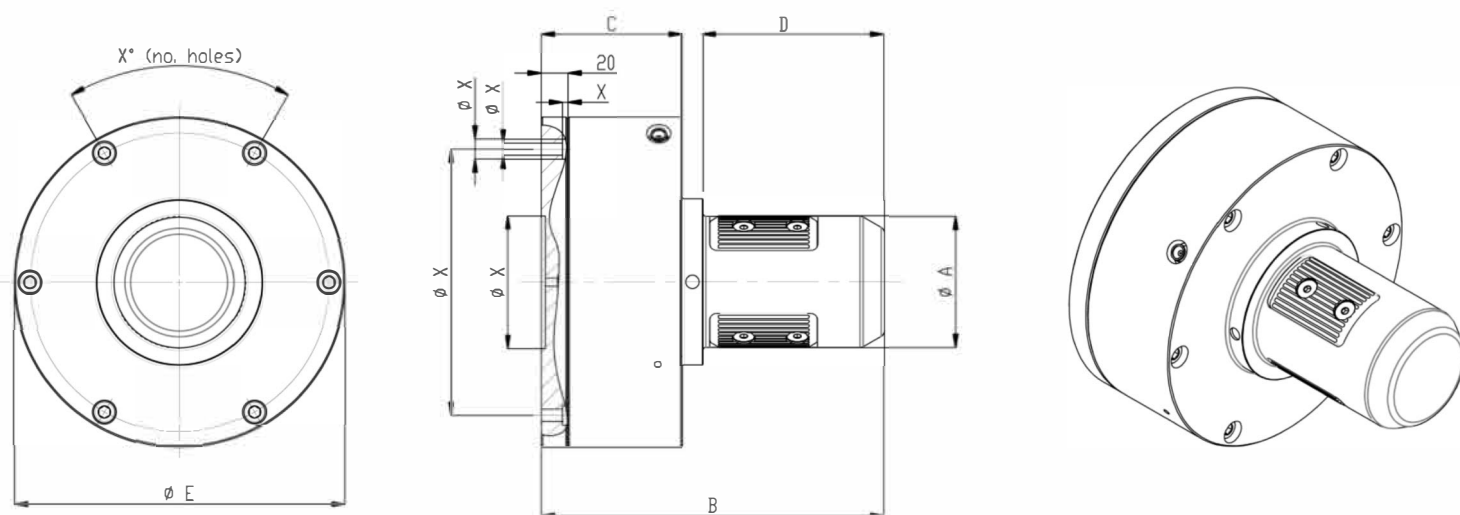
- "positive" version: expansion with air and automatic release with springs
- "negative" version: expansion by default with springs and release with air

Technical data shown below is relative to the "positive" version.



single diameter

PNEUMOMECHANICAL negative - model NEG.PNM



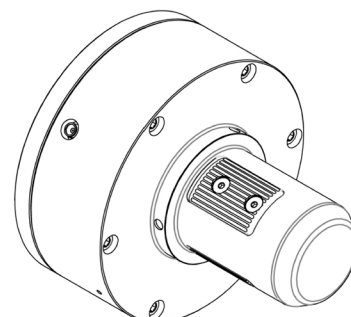
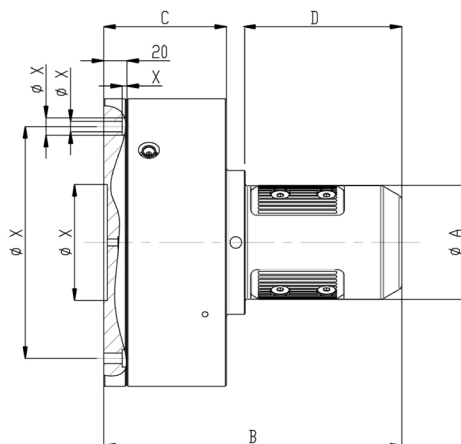
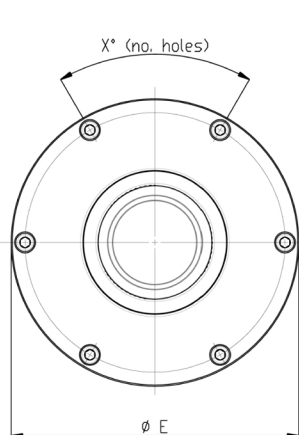
Code	Core I.D.	A mm	B mm	C mm	D mm	E mm	Expansion (mm)	Load (N) max	X mm
NEG.PNM.2.68	70mm	68,5	235	120	110	192	68,5-77,5	10.000	A richie- sta Upon request
NEG.PNM.2.74	76mm	74	235	120	110	192	74,5-83,8	10.000	
NEG.PNM.2.148	150/152mm	148	250	120	110	192	148,5-157,5	10.000	

All data shown have to be considered for a single piece. For different dimensions, please contact our technical department.



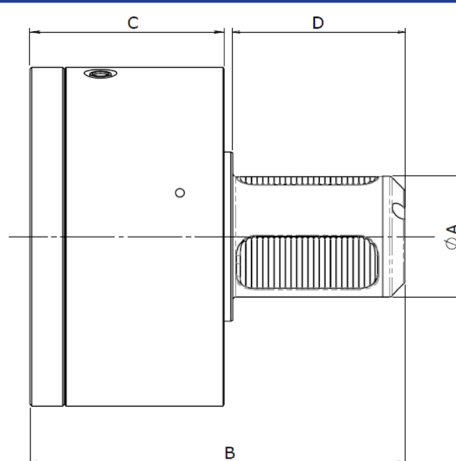
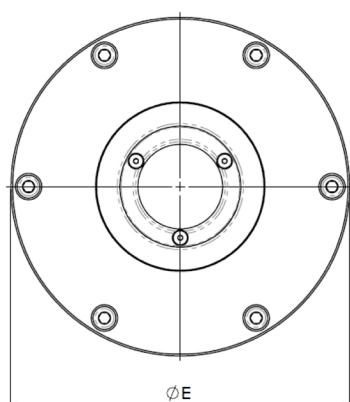
single diameter

PNEUMOMECHANICAL positive - model PNM



Code	Core I.D.	A mm	B mm	C mm	D mm	E mm	Expansion (mm)	Load (N) max	Torque (Nm) max	X mm
PNM.2.68-76	70-76mm	68,5	235	110	120	192	68,5-81	9.000	390	Upon request
PNM.2.68	70mm	68	215	100	110	192	68,5-78	9.000	390	
PNM.2.74	76mm	74	215	100	110	192	74,5-83,8	12.000	600	
PNM.2.98	100mm	98	215	100	110	192	98,5-107,5	16.000	900	
PNM.2.118	120mm	118	215	100	110	192	118,5-127,5	22.000	1.400	
PNM.2.123	125mm	123	215	100	110	192	123,5-132,5	30.000	2.200	
PNM.2.148	150/152mm	148	215	100	110	192	148,5-157	40.000	4.500	

pneumomechanical for reel handling and special applications



Code	Diametro anima Core I.D.	A mm	B mm	C mm	D mm	E mm	Expansion (mm)	Load (N) max	Torque (Nm) max	X mm
PNM.2.68-76C	70-76mm	68,5	212,5	110	98,5	192	68,5-81	9.000	390	A richiesta Upon request

All data shown have to be considered for a single piece. For different dimensions, please contact our technical department.