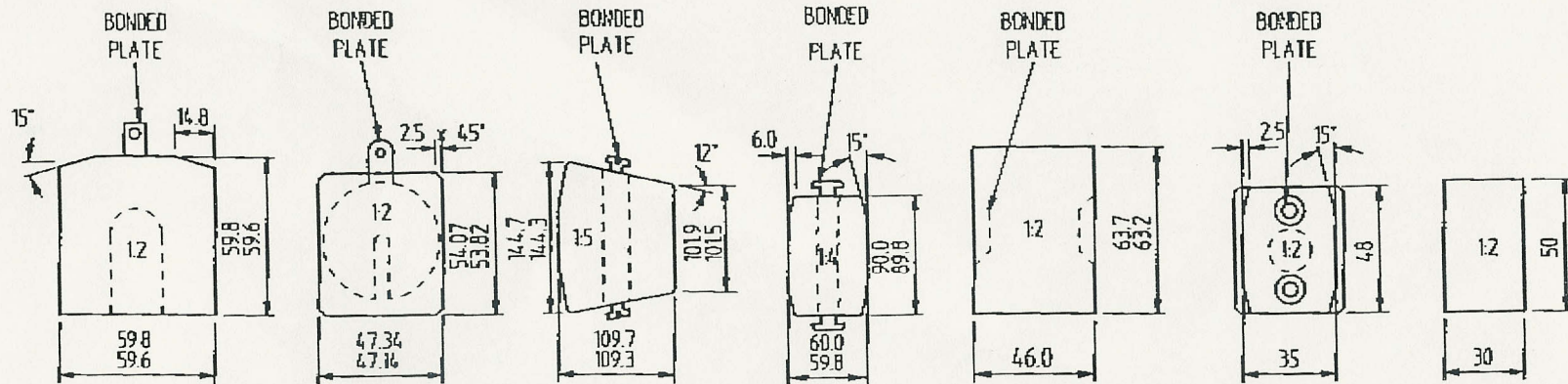


BRAKE USED ON	VMS, VMH	VS, VH	VKSD	VKS	VCS	T40, TS16	VC	GMR
BRAKING FORCE (MAX)	430kN	285kN	158kN	103kN	57kN	45kN	42kN	35kN
BRAKE PAD AREA	1084cm ² [168in ²]	518cm ² [80.3in ²]	353cm ² [56in ²]	176.7cm ² [27.4in ²]	98cm ² [15.2in ²]	714cm ² [111in ²]	60cm ² [9.3in ²]	203.6cm ² [31.6in ²]
BRAKE PAD PRESSURE	495.8N/cm ²	687.7N/cm ²	544N/cm ²	728N/cm ²	727N/cm ²	787.8N/cm ²	875N/cm ²	221N/cm ²
BRAKE PAD THICKNESS	25.4/25.0mm	25.25/24.75mm	20.25/19.75mm	21.4/21.0mm	19.25/18.75mm	19.1/18.8mm	29.75/29.50mm	19.25/18.75mm
BRAKE PAD DRG./SCHNO.	A31737 - Z150/2	A21036 - Z142/2	A21765 - Z157/2	A32158 - Z144/8	A31552 - Z145/3	A32356 - Z155/2	30748	A21009 - Z140/1
WEAR ALLOWANCE	11mm	13mm	10mm	10mm	9mm	10mm	15mm	10mm



BRAKE USED ON	F20	CE	GMX	MX	MR	T2	MIJ
BRAKING FORCE (MAX)	20kN	19.6kN	14.2kN	15.2kN	12kN	2kN	2240N
BRAKE PAD AREA	35cm ² [5.34in ²]	25.4cm ² [3.95in ²]	133cm ² [20.6in ²]	52cm ² [8.1in ²]	29cm ² [4.5in ²]	14.4cm ² [2.22in ²]	15cm ² [2.3in ²]
BRAKE PAD PRESSURE	714N/cm ²	964N/cm ²	133.8N/cm ²	3413N/cm ²	517N/cm ²	173N/cm ²	186N/cm ²
BRAKE PAD THICKNESS	13/12.7mm	18.23/17.85mm	13.25/12.75mm	13.25/12.75mm	12.95/12.45mm	8mm	21/R20mm
BRAKE PAD DRG./SCHNO.	A32260 - Z153/2	30598 Z122/18	A32336 - Z156/4	A31846 - Z152/5	30121 - Z112/71	A32949 - Z154/2	31077 Z127/4
WEAR ALLOWANCE	7mm	16mm	7mm	5mm	10mm	4mm	5mm

BRAKE PAD CHART