

# Airflex® E and VE Construction



**E Element**



**VE Element**

Type E and VE elements combine rugged design and rigid construction features which make them ideal for moderate to heavy duty clutch and brake service. They are suited for medium speed cyclic applications which are subject to large thermal loads. When used with an air agitating ventilated drum they provide excellent slip clutch and tension brake service.

A neoprene rubber and cord tube is contained by two side housings. Friction shoes are held in position on the tube periphery by leaf springs which pass through the shoe back plates and side housings. The springs counteract centrifugal force acting on the shoes and insure shoe disengagement. Torque is transmitted by torque bars which are held in position by the side housings. Pressurizing the tube forces the friction shoes to engage an inside drum diameter.

The expanding design allows the element to behave as a centrifugal clutch. The element's operating speed determines the spring force required to retract the shoes upon tube exhaust. When a large spring force is required, side housings with reinforced spring slots are furnished.

The VE element differs from the E element in that the VE side housings and friction shoe backing plates have open construction and ventilating features which permits a greater flow of cooling air and greater heat dissipation.

Element torque is dependent upon the applied pressure, release spring force and speed. Catalog ratings are given at 75 psi (5,2 bar) and zero rpm. Maximum recommended pressure is 125 psi (8,6 bar). Adjustment for operating pressure, spring force and speed is explained under Selection Procedure.

E elements are available in 10 sizes; VE elements in 3 sizes. They are identified by the inside drum diameter in inches to which they expand and the width in inches of their friction lining. For instance, size 16E475 is designed to expand to a 16 inch diameter drum and has a friction lining width of 4.75 inches. The smallest E element will expand to a 12 inch (305 mm) diameter drum and the largest to a 40 inch (1016 mm) diameter drum.

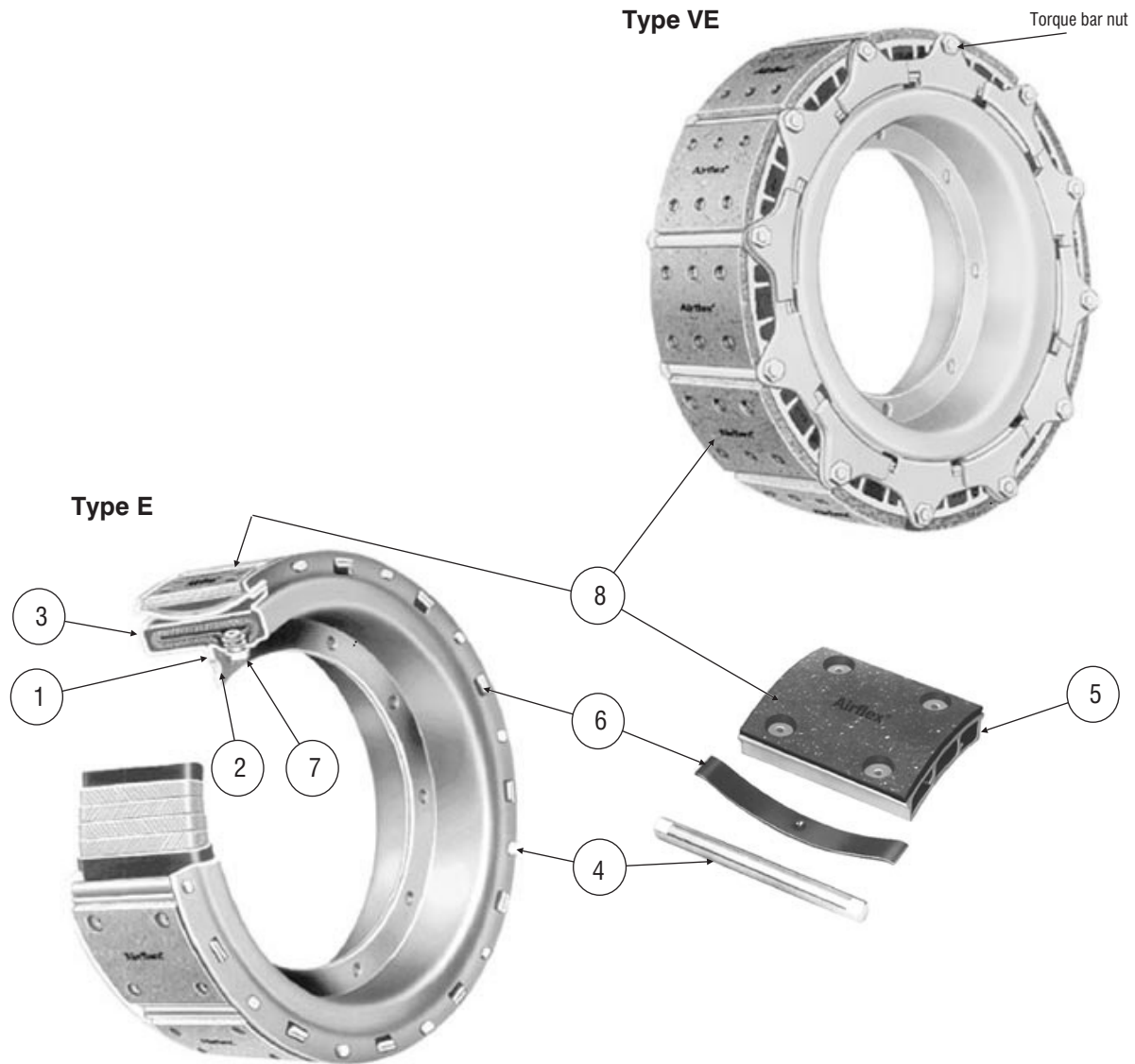
Two elements can be bolted to an adapter ring to form a dual element having twice the torque capacity of a single element.

E elements are available with split side housings. They are used in applications having limited axial access for element maintenance. Butt end actuating tubes are also available for replacement purposes.

### Where used:

- Construction Equipment
- Marine Winches
- Metalworking Machinery
- Slip Clutches
- Tension Brakes

# Airflex® E and VE Component Descriptions



| Size     | Torque Rating       |                    |
|----------|---------------------|--------------------|
|          | English             | SI                 |
|          | lb • in<br>@ 75 psi | N • m<br>@ 5,2 bar |
| 12E475   | 11300               | 1280               |
| 14E475   | 16000               | 1810               |
| 16E475   | 21500               | 2430               |
| 19E475   | 31500               | 3560               |
| 21.5E475 | 40500               | 4580               |
| 24E475   | 52000               | 5880               |
| 27E475   | 67000               | 7570               |
| 30E600   | 106000              | 12000              |
| 34E600   | 137000              | 15500              |
| 40E700   | 225000              | 25400              |
| 19VE475  | 25500               | 2880               |
| 24VE475  | 45200               | 5110               |
| 27VE475  | 58500               | 6610               |

| Item  | Component Description                             |
|-------|---|
| 1     | Housing half                                      |
| 2     | Housing half with valve hole                      |
| 3     | Tube  |
| 4     | Torque bar (nuts required for VE)                 |
| 5     | Friction shoe assembly                            |
| 6     | Release spring                                    |
| 7     | Tube nut  |
| 8     | Friction block & rivet kit                        |
| 4,5,6 | Torque bars, friction shoes & release springs kit |

# Airflex® Single E Elements



Form E 601

Technical Data

Sizes 12 to 40

| English         |        | lbin<br>@ 75 psi | rpm  | psi/rpm <sup>2</sup> | lb-ft <sup>2</sup> | lb  | in <sup>2</sup> | in   | in   | in <sup>3</sup> | in    |
|-----------------|--------|------------------|------|----------------------|--------------------|-----|-----------------|------|------|-----------------|-------|
| <b>12E475</b>   | 142314 | 11300            | 1800 | 1.0 E-06             | 5                  | 25  | 151             | 0.18 | 0.06 | 50              | 12.09 |
| <b>14E475</b>   | 142213 | 16000            | 1500 | 1.2 E-06             | 8                  | 32  | 139             | 0.37 | 0.18 | 55              | 14.09 |
| <b>16E475</b>   | 142214 | 21500            | 1300 | 1.3 E-06             | 14                 | 42  | 167             | 0.37 | 0.18 | 70              | 16.09 |
| <b>19E475</b>   | 142215 | 31500            | 1100 | 2.1 E-06             | 26                 | 53  | 202             | 0.37 | 0.18 | 85              | 19.13 |
| <b>21.5E475</b> | 142395 | 40500            | 975  | 2.4 E-06             | 39                 | 60  | 236             | 0.37 | 0.18 | 100             | 21.63 |
| <b>24E475</b>   | 142216 | 52000            | 875  | 2.2 E-06             | 56                 | 67  | 257             | 0.37 | 0.18 | 110             | 24.13 |
| <b>27E475</b>   | 142334 | 67000            | 775  | 2.4 E-06             | 79                 | 75  | 289             | 0.37 | 0.18 | 125             | 27.18 |
| <b>30E600</b>   | 142336 | 106000           | 700  | 4.1 E-06             | 160                | 125 | 434             | 0.37 | 0.18 | 175             | 30.18 |
| <b>34E600</b>   | 142335 | 137000           | 620  | 4.3 E-06             | 261                | 156 | 496             | 0.37 | 0.18 | 310             | 34.18 |
| <b>40E700</b>   | 142452 | 225000           | 525  | 9.1 E-06             | 520                | 174 | 864             | 1.25 | 1.06 | 315             | 40.18 |

| Size            | Part Number | M <sub>T</sub><br>Torque<br>Rating | Maximum<br>Speed | C <sub>s</sub><br>Centrifugal<br>Gain<br>Constant | Wk <sup>2</sup> | Weight<br>Mass | Friction<br>Area | Lining Thickness |      | Air<br>Tube<br>Cavity | Maximum<br>Drum<br>Diameter |
|-----------------|-------------|------------------------------------|------------------|---|-----------------|----------------|------------------|------------------|------|-----------------------|-----------------------------|
|                 |             |                                    |                  |   |                 |                |                  | New              | Worn |                       |                             |
|                 |             |                                    |                  |   |                 |                |                  | New              | Worn |                       |                             |
| <b>12E475</b>   | 142314      | 1280                               | 1800             | 0,1 E-06  | 0,21            | 11             | 974              | 5                | 2    | 0,82                  | 307                         |
| <b>14E475</b>   | 142213      | 1810                               | 1500             | 0,1 E-06  | 0,34            | 14             | 897              | 9                | 5    | 0,90                  | 358                         |
| <b>16E475</b>   | 142214      | 2430                               | 1300             | 0,1 E-06  | 0,59            | 19             | 1077             | 9                | 5    | 1,15                  | 409                         |
| <b>19E475</b>   | 142215      | 3560                               | 1100             | 0,1 E-06  | 1,09            | 24             | 1303             | 9                | 5    | 1,39                  | 486                         |
| <b>21.5E475</b> | 142395      | 4580                               | 975              | 0,2 E-06  | 1,64            | 27             | 1522             | 9                | 5    | 1,64                  | 549                         |
| <b>24E475</b>   | 142216      | 5880                               | 875              | 0,2 E-06  | 2,35            | 30             | 1658             | 9                | 5    | 1,80                  | 613                         |
| <b>27E475</b>   | 142334      | 7570                               | 775              | 0,2 E-06  | 3,32            | 34             | 1864             | 9                | 5    | 2,05                  | 690                         |
| <b>30E600</b>   | 142336      | 12000                              | 700              | 0,3 E-06  | 6,72            | 57             | 2799             | 9                | 5    | 2,87                  | 767                         |
| <b>34E600</b>   | 142335      | 15500                              | 620              | 0,3 E-06  | 10,96           | 71             | 3199             | 9                | 5    | 5,08                  | 868                         |
| <b>40E700</b>   | 142452      | 25400                              | 525              | 0,6 E-06  | 21,84           | 79             | 5573             | 32               | 27   | 5,17                  | 1021                        |

| SI | Nm<br>@ 5,2 bar | rpm | bar/rpm <sup>2</sup> | kg·m <sup>2</sup> | kg | cm <sup>2</sup> | mm | mm | dm <sup>3</sup> | mm |
|----|-----------------|-----|----------------------|-------------------|----|-----------------|----|----|-----------------|----|
|----|-----------------|-----|----------------------|-------------------|----|-----------------|----|----|-----------------|----|

**Notes:**

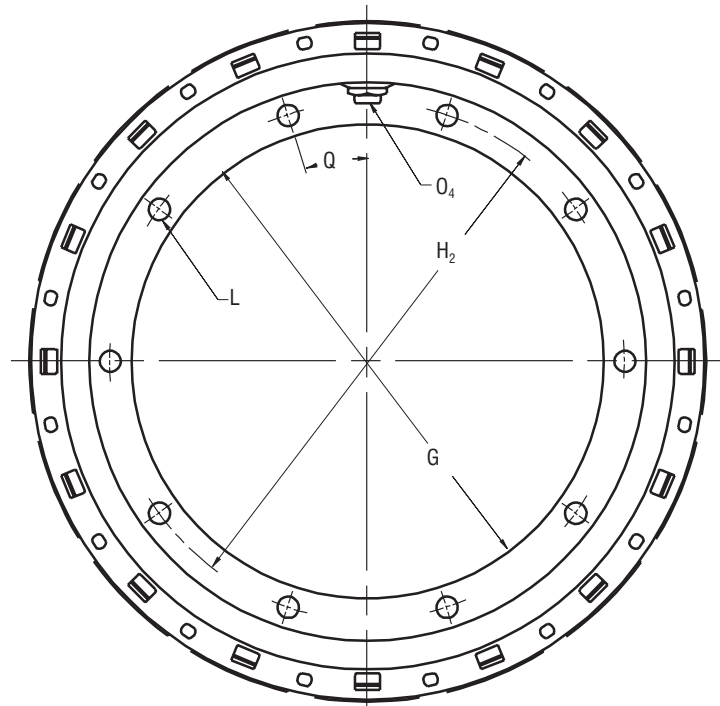
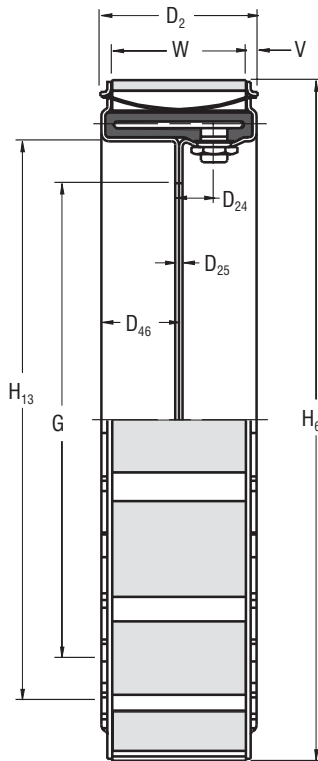
- ① Refers to basic part number only. When ordering, the release spring force and type of friction linings must be specified.
- ② Dynamic torque shown, static torque approximately 25% greater. Torque in each application is dependent upon release spring force, air pressure and speed.
- ③ Tolerances for sizes:  
12 thru 27  
+0.010/-0.000 in (+0,25/-0,00 mm)  
30 thru 40  
+0.005/-0.000 in (+0,13/-0,00 mm)
- ④ American National Pipe Thread
- ⑤ Drum contact with worn shoes.
- ⑥ Figures shown are with teflon or graphite slip linings. Multiply values by 1.5 for standard linings, and contact factory for possible need of reinforced housings.
- ⑦ Refer to page C-42 for maximum idle RPM.

# Airflex® Single E Elements



Form E 601

Dimensional Data Sizes 12 to 40



| English         |             | lb in<br>@ 75 psi               | Dimensions in inches      |                 |                 |                 |        |                |                |                 |          |      |             |       |                |     |       |
|-----------------|-------------|---------------------------------|---------------------------|-----------------|-----------------|-----------------|--------|----------------|----------------|-----------------|----------|------|-------------|-------|----------------|-----|-------|
| <b>12E475</b>   | 142314      | 11300                           | 5.50                      | 1.25            | 0.27            | 2.75            | 6.000  | 7.000          | 11.91          | 8.04            | 10       | 0.38 | 1/4-18      | 18.00 | 0.38           | 8   | 4.75  |
| <b>14E475</b>   | 142213      | 16000                           | 5.50                      | 1.25            | 0.27            | 2.75            | 7.625  | 8.750          | 13.91          | 9.73            | 12       | 0.38 | 1/4-18      | 15.00 | 0.38           | 10  | 4.75  |
| <b>16E475</b>   | 142214      | 21500                           | 5.50                      | 1.25            | 0.27            | 2.75            | 9.625  | 10.750         | 15.91          | 11.73           | 8        | 0.50 | 3/8-18      | 22.50 | 0.38           | 12  | 4.75  |
| <b>19E475</b>   | 142215      | 31500                           | 5.50                      | 1.25            | 0.27            | 2.75            | 12.125 | 13.750         | 18.91          | 14.73           | 10       | 0.50 | 3/8-18      | 18.00 | 0.38           | 12  | 4.75  |
| <b>21.5E475</b> | 142395      | 40500                           | 5.50                      | 1.25            | 0.27            | 2.75            | 14.250 | 15.750         | 21.41          | 17.23           | 8        | 0.75 | 3/8-18      | 22.50 | 0.38           | 14  | 4.75  |
| <b>24E475</b>   | 142216      | 52000                           | 5.50                      | 1.25            | 0.27            | 2.75            | 16.750 | 18.250         | 23.91          | 19.73           | 10       | 0.75 | 3/8-18      | 18.00 | 0.38           | 16  | 4.75  |
| <b>27E475</b>   | 142334      | 67000                           | 5.50                      | 1.25            | 0.27            | 2.75            | 19.750 | 21.250         | 26.91          | 22.73           | 12       | 0.75 | 3/8-18      | 15.00 | 0.38           | 18  | 4.75  |
| <b>30E600</b>   | 142336      | 106000                          | 7.00                      | 1.63            | 0.31            | 3.50            | 21.000 | 23.000         | 29.91          | 24.94           | 14       | 0.75 | 1/2-14      | 12.86 | 0.50           | 14  | 6.00  |
| <b>34E600</b>   | 142335      | 137000                          | 7.00                      | 1.63            | 0.31            | 3.50            | 25.000 | 27.000         | 33.91          | 28.94           | 16       | 0.75 | 1/2-14      | 11.25 | 0.50           | 16  | 6.00  |
| <b>40E700</b>   | 142452      | 225000                          | 8.13                      | 1.75            | 0.31            | 4.06            | 30.000 | 32.000         | 39.91          | 34.63           | 18       | 0.75 | 1/2-14      | 10.00 | 0.56           | 18  | 7.00  |
| Size            | Part Number | M <sub>t</sub><br>Torque Rating | D <sub>2</sub>            | D <sub>24</sub> | D <sub>25</sub> | D <sub>46</sub> | G      | H <sub>2</sub> | H <sub>6</sub> | H <sub>13</sub> | No. Dia. |      | Q<br>(Deg.) | V     | No. Width      |     |       |
|                 |             |                                 |                           |                 |                 |                 |        |                |                |                 | L        |      |             |       | O <sub>4</sub> | W   |       |
|                 |             |                                 |                           |                 |                 |                 |        |                |                |                 | No.      | Dia. |             |       |                | No. | Width |
| <b>12E475</b>   | 142314      | 1280                            | 140                       | 32              | 7               | 70              | 152.4  | 177.8          | 303            | 204             | 10       | 10   | 1/4-18      | 18,00 | 10             | 8   | 121   |
| <b>14E475</b>   | 142213      | 1810                            | 140                       | 32              | 7               | 70              | 193,7  | 222,3          | 353            | 247             | 12       | 10   | 1/4-18      | 15,00 | 10             | 10  | 121   |
| <b>16E475</b>   | 142214      | 2430                            | 140                       | 32              | 7               | 70              | 244,5  | 273,1          | 404            | 298             | 8        | 13   | 3/8-18      | 22,50 | 10             | 12  | 121   |
| <b>19E475</b>   | 142215      | 3560                            | 140                       | 32              | 7               | 70              | 308,0  | 349,3          | 480            | 374             | 10       | 13   | 3/8-18      | 18,00 | 10             | 12  | 121   |
| <b>21.5E475</b> | 142395      | 4580                            | 140                       | 32              | 7               | 70              | 362,0  | 400,1          | 544            | 438             | 8        | 19   | 3/8-18      | 22,50 | 10             | 14  | 121   |
| <b>24E475</b>   | 142216      | 5880                            | 140                       | 32              | 7               | 70              | 425,5  | 463,6          | 607            | 501             | 10       | 19   | 3/8-18      | 18,00 | 10             | 16  | 121   |
| <b>27E475</b>   | 142334      | 7570                            | 140                       | 32              | 7               | 70              | 501,7  | 539,8          | 684            | 577             | 12       | 19   | 3/8-18      | 15,00 | 10             | 18  | 121   |
| <b>30E600</b>   | 142336      | 12000                           | 178                       | 41              | 8               | 89              | 533,4  | 584,2          | 760            | 633             | 14       | 19   | 1/2-14      | 12,86 | 13             | 14  | 152   |
| <b>34E600</b>   | 142335      | 15500                           | 178                       | 41              | 8               | 89              | 635,0  | 685,8          | 861            | 735             | 16       | 19   | 1/2-14      | 11,25 | 13             | 16  | 152   |
| <b>40E700</b>   | 142452      | 25400                           | 206                       | 44              | 8               | 103             | 762,0  | 812,8          | 1014           | 879             | 18       | 19   | 1/2-14      | 10,00 | 14             | 18  | 178   |
| SI              |             | Nm<br>@ 5,2 bar                 | Dimensions in millimeters |                 |                 |                 |        |                |                |                 |          |      |             |       |                |     |       |

# Airflex® Dual E Elements



Form E 603

Technical Data

Sizes 12 to 34

| English  | lb in<br>@ 75 psi | rpm  | psi/rpm <sup>2</sup> | lb ft <sup>2</sup> | lb  | in <sup>2</sup> | in   | in   | in <sup>3</sup> | in    |
|----------|-------------------|------|----------------------|--------------------|-----|-----------------|------|------|-----------------|-------|
| 12E475   | 22600             | 1800 | 1.0 E-06             | 12                 | 88  | 302             | 0.18 | 0.06 | 100             | 12.09 |
| 14E475   | 32000             | 1500 | 1.2 E-06             | 20                 | 128 | 278             | 0.37 | 0.18 | 110             | 14.09 |
| 16E475   | 43000             | 1300 | 1.3 E-06             | 38                 | 156 | 334             | 0.37 | 0.18 | 140             | 16.09 |
| 19E475   | 63000             | 1100 | 2.1 E-06             | 79                 | 212 | 404             | 0.37 | 0.18 | 170             | 19.13 |
| 21.5E475 | 81000             | 975  | 2.4 E-06             | 118                | 236 | 472             | 0.37 | 0.18 | 200             | 21.63 |
| 24E475   | 104000            | 875  | 2.2 E-06             | 202                | 321 | 514             | 0.37 | 0.18 | 220             | 24.13 |
| 27E475   | 134000            | 775  | 2.4 E-06             | 302                | 384 | 578             | 0.37 | 0.18 | 250             | 27.18 |
| 30E600   | 212000            | 700  | 4.1 E-06             | 567                | 603 | 868             | 0.37 | 0.12 | 350             | 30.18 |
| 34E600   | 274000            | 620  | 4.3 E-06             | 964                | 765 | 992             | 0.37 | 0.12 | 620             | 34.18 |

| Size     | M,<br>Torque<br>Rating <sup>① ⑥</sup> | ③<br>Maximum<br>Speed | C,<br>Centrifugal<br>Gain<br>Constant | ④               |        | Friction<br>Area | New Worn         |      | ⑤<br>Air Tube<br>Cavity | Maximum<br>Drum<br>Diameter |
|----------|---------------------------------------|-----------------------|---------------------------------------|-----------------|--------|------------------|------------------|------|-------------------------|-----------------------------|
|          |                                       |                       |                                       | Wk <sup>2</sup> | Weight |                  | Lining Thickness |      |                         |                             |
|          |                                       |                       |                                       | J               | Mass   |                  | New              | Worn |                         |                             |
| 12E475   | 2550                                  | 1800                  | 0,1 E-06                              | 0,50            | 40     | 1948             | 5                | 2    | 1,64                    | 307                         |
| 14E475   | 3620                                  | 1500                  | 0,1 E-06                              | 0,84            | 58     | 1793             | 9                | 5    | 1,80                    | 358                         |
| 16E475   | 4860                                  | 1300                  | 0,1 E-06                              | 1,60            | 71     | 2154             | 9                | 5    | 2,30                    | 409                         |
| 19E475   | 7120                                  | 1100                  | 0,1 E-06                              | 3,32            | 96     | 2606             | 9                | 5    | 2,79                    | 486                         |
| 21.5E475 | 9150                                  | 975                   | 0,2 E-06                              | 4,96            | 107    | 3044             | 9                | 5    | 3,28                    | 549                         |
| 24E475   | 11800                                 | 875                   | 0,2 E-06                              | 8,48            | 145    | 3315             | 9                | 5    | 3,61                    | 613                         |
| 27E475   | 15100                                 | 775                   | 0,2 E-06                              | 12,68           | 174    | 3728             | 9                | 5    | 4,10                    | 690                         |
| 30E600   | 24000                                 | 700                   | 0,3 E-06                              | 23,81           | 273    | 5599             | 9                | 3    | 5,74                    | 767                         |
| 34E600   | 31000                                 | 620                   | 0,3 E-06                              | 40,49           | 347    | 6398             | 9                | 3    | 10,2                    | 868                         |

| SI | N m<br>@ 5,2 bar | rpm | bar/rpm <sup>2</sup> | kg·m <sup>2</sup> | kg | cm <sup>2</sup> | mm | mm | dm <sup>3</sup> | mm |
|----|------------------|-----|----------------------|-------------------|----|-----------------|----|----|-----------------|----|
|----|------------------|-----|----------------------|-------------------|----|-----------------|----|----|-----------------|----|

**Notes:**

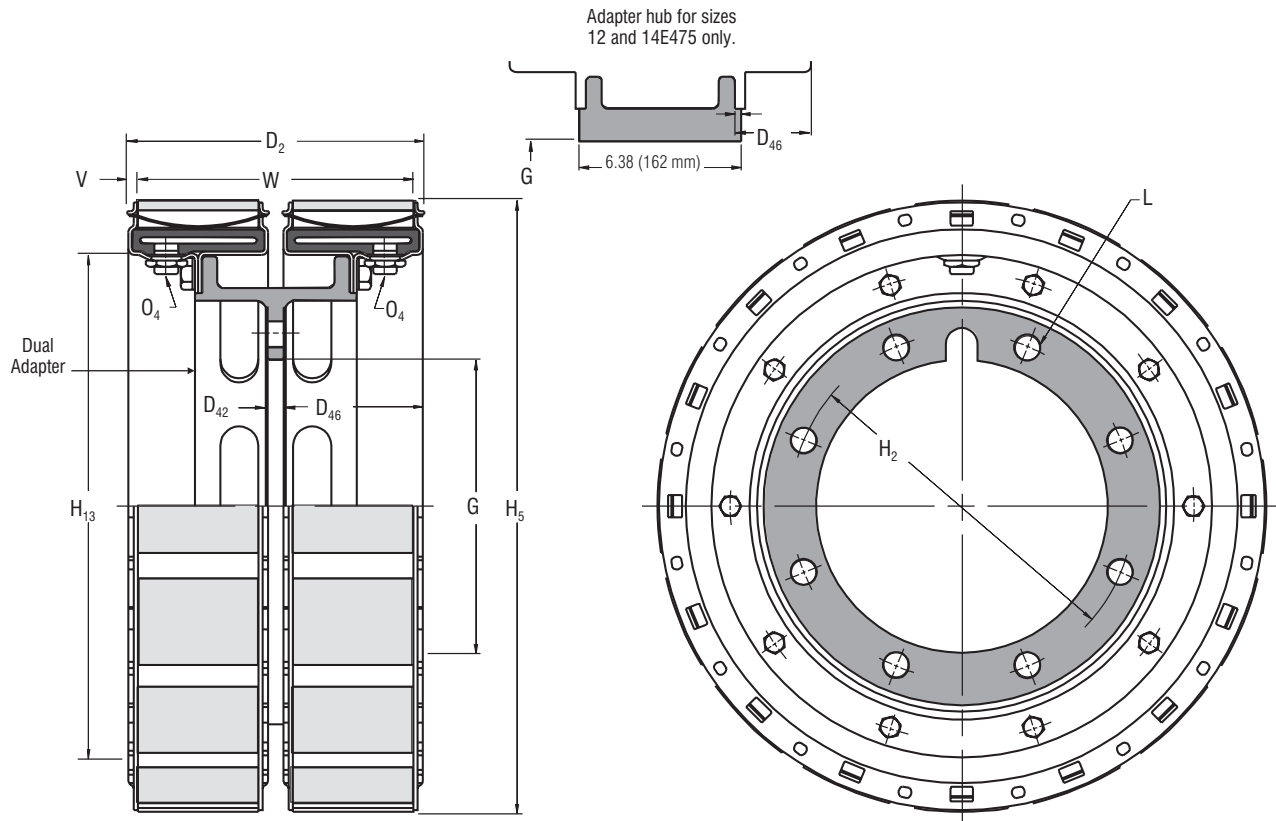
- ① Dynamic torque shown, static torque approximately 25% greater. Torque in each application is dependent upon release spring force, air pressure and speed.
- ② Tolerance +0.005/-0.000 (+0,13/-0,00 mm)
- ③ Refer to Form E613. Integral adapter hub used which is bored and keyed for direct shaft mounting.
- ④ Includes two elements and dual adapter.
- ⑤ Drum contact with worn shoes.
- ⑥ Figures shown are with teflon or graphite slip linings. Multiply values by 1.5 for standard linings, and contact factory for possible need of reinforced housings.
- ⑦ American National Pipe Thread Size 40 has four inlet valves
- ⑧ Refer to page C-42 for maximum idle RPM.

# Airflex® Dual E Elements



Form E 603

Dimensional Data Sizes 12 to 34



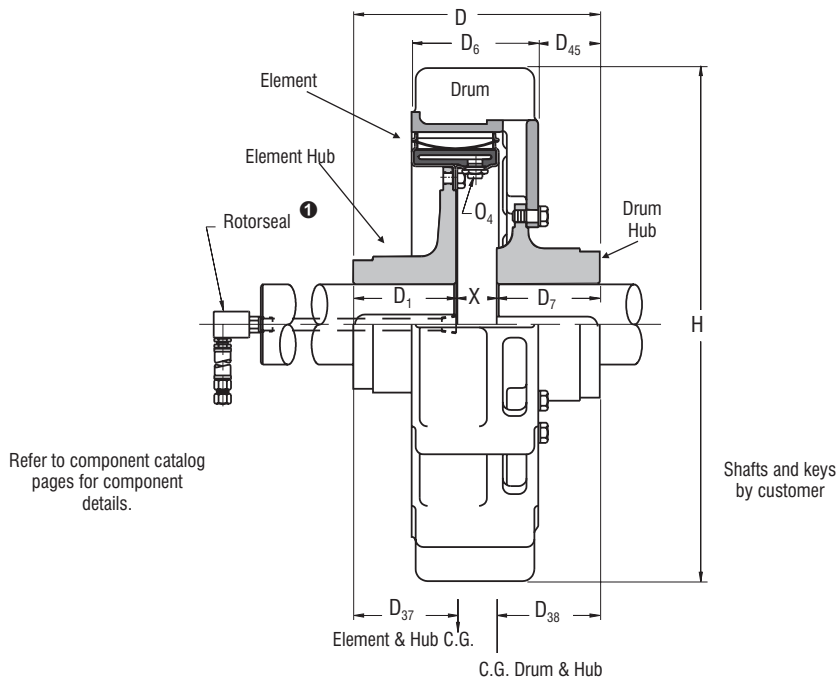
| English  | lb in<br>@ 75 psi                  | Dimensions in inches      |                 |                 |        |                |                |                 |     |      |                     |      |     |       |
|----------|------------------------------------|---------------------------|-----------------|-----------------|--------|----------------|----------------|-----------------|-----|------|---------------------|------|-----|-------|
| 12E475   | 22600                              | 11.75                     | N/A             | N/A             | ③      | ③              | 11.91          | 8.40            | N/A | N/A  | 1/4-18              | 0.38 | 16  | 11.00 |
| 14E475   | 32000                              | 11.75                     | N/A             | N/A             | ③      | ③              | 13.91          | 9.73            | N/A | N/A  | 1/4-18              | 0.38 | 20  | 11.00 |
| 16E475   | 43000                              | 11.63                     | 0.50            | 5.56            | 5.500  | 6.750          | 15.91          | 11.73           | 8   | 0.78 | 3/8-18              | 0.38 | 24  | 10.88 |
| 19E475   | 63000                              | 11.63                     | 0.50            | 5.56            | 8.000  | 9.500          | 18.91          | 14.73           | 10  | 0.78 | 3/8-18              | 0.38 | 24  | 10.88 |
| 21.5E475 | 81000                              | 11.63                     | 0.63            | 5.50            | 9.625  | 11.000         | 21.41          | 17.23           | 6   | 0.78 | 3/8-18              | 0.38 | 28  | 10.88 |
| 24E475   | 104000                             | 11.63                     | 0.63            | 5.50            | 11.500 | 13.500         | 23.91          | 19.73           | 8   | 1.03 | 3/8-18              | 0.38 | 32  | 10.88 |
| 27E475   | 134000                             | 11.63                     | 0.63            | 5.50            | 14.625 | 16.000         | 26.91          | 22.73           | 8   | 0.78 | 3/8-18              | 0.38 | 36  | 10.88 |
| 30E600   | 212000                             | 14.81                     | 0.75            | 7.03            | 15.000 | 17.000         | 29.91          | 24.94           | 12  | 1.03 | 1/2-14              | 0.50 | 28  | 13.81 |
| 34E600   | 274000                             | 14.81                     | 0.75            | 7.03            | 19.000 | 21.000         | 33.91          | 28.94           | 12  | 1.03 | 1/2-14              | 0.50 | 32  | 13.81 |
| Size     | M <sub>T</sub><br>Torque<br>Rating | D <sub>2</sub>            | D <sub>42</sub> | D <sub>46</sub> | ②<br>G | H <sub>2</sub> | H <sub>6</sub> | H <sub>13</sub> | ④   |      | ④<br>O <sub>4</sub> | V    | ⑤   |       |
|          |                                    |                           |                 |                 |        |                |                |                 | No. | Dia. |                     |      | No. | Width |
|          |                                    |                           |                 |                 |        |                |                |                 | L   |      |                     |      | No. | Width |
| 12E475   | 2550                               | 298                       | N/A             | N/A             | ③      | ③              | 303            | 213             | N/A | N/A  | 1/4-18              | 10   | 16  | 279   |
| 14E475   | 3620                               | 298                       | N/A             | N/A             | ③      | ③              | 353            | 247             | N/A | N/A  | 1/4-18              | 10   | 20  | 279   |
| 16E475   | 4860                               | 295                       | 13              | 141             | 139,7  | 171,5          | 404            | 298             | 8   | 20   | 3/8-18              | 10   | 24  | 276   |
| 19E475   | 7120                               | 295                       | 13              | 141             | 203,2  | 241,3          | 480            | 374             | 10  | 20   | 3/8-18              | 10   | 24  | 276   |
| 21.5E475 | 9150                               | 295                       | 16              | 140             | 244,5  | 279,4          | 544            | 438             | 6   | 20   | 3/8-18              | 10   | 28  | 276   |
| 24E475   | 11800                              | 295                       | 16              | 140             | 292,1  | 342,9          | 607            | 501             | 8   | 26   | 3/8-18              | 10   | 32  | 276   |
| 27E475   | 15100                              | 295                       | 16              | 140             | 371,5  | 406,4          | 684            | 577             | 8   | 20   | 3/8-18              | 10   | 36  | 276   |
| 30E600   | 24000                              | 376                       | 19              | 179             | 381,0  | 431,8          | 760            | 633             | 12  | 26   | 1/2-14              | 13   | 28  | 351   |
| 34E600   | 31000                              | 376                       | 19              | 179             | 482,6  | 533,4          | 861            | 735             | 12  | 26   | 1/2-14              | 13   | 32  | 351   |
| SI       | Nm<br>@ 5,2 bar                    | Dimensions in millimeters |                 |                 |        |                |                |                 |     |      |                     |      |     |       |

# Airflex® E Clutch Application



Form E 604

Coupling Arrangement – Dimensional Data Sizes 12 to 40



| English  | lb in<br>@ 75 psi                                 | lb                                  | Dimensions in inches           |                           |      |      |      |                  |                |                |                |  |                 |                 |       |                |      |
|----------|---|-------------------------------------|--------------------------------|---------------------------|------|------|------|------------------|----------------|----------------|----------------|--|-----------------|-----------------|-------|----------------|------|
| 12E475   | 11300   | B3                                  | 150                            | 1.50                      | 2.50 | 1.50 | 2.75 | 10.25            | 3.75           | 8.00           | 3.75           | 3.20                                       | 4.12            | 1.25            | 18.00 | 1/4-18         | 2.75 |
| 14E475   | 16000   | B3                                  | 183                            | 1.50                      | 3.00 | 1.50 | 3.00 | 10.75            | 3.75           | 8.00           | 4.25           | 3.21                                       | 4.30            | 1.75            | 20.00 | 1/4-18         | 2.75 |
| 16E475   | 21500   | B3                                  | 237                            | 1.75                      | 3.50 | 1.75 | 3.25 | 12.00            | 4.25           | 8.00           | 5.00           | 3.72                                       | 4.70            | 3.50            | 22.00 | 3/8-18         | 2.75 |
| 19E475   | 31500   | B3                                  | 327                            | 2.25                      | 4.50 | 2.25 | 4.75 | 14.44            | 5.75           | 8.00           | 6.00           | 4.60                                       | 5.10            | 3.50            | 25.00 | 3/8-18         | 2.68 |
| 21.5E475 | 40500   | B3                                  | 383                            | 2.25                      | 4.50 | 2.75 | 4.75 | 14.44            | 5.75           | 8.00           | 6.00           | 4.75                                       | 5.20            | 3.50            | 29.50 | 3/8-18         | 2.68 |
| 24E475   | 52000   | B3                                  | 514                            | 3.00                      | 6.50 | 2.75 | 5.25 | 18.06            | 6.50           | 8.00           | 9.00           | 5.19                                       | 5.33            | 6.37            | 32.00 | 3/8-18         | 2.68 |
| 27E475   | 67000   | B3                                  | 580                            | 2.75                      | 5.25 | 2.75 | 5.50 | 16.56            | 6.50           | 8.00           | 7.50           | 5.30                                       | 6.21            | 4.87            | 35.00 | 3/8-18         | 2.56 |
| 30E600   | 106000  | C2                                  | 740                            | 2.75                      | 5.50 | 2.75 | 5.50 | 17.31            | 6.50           | 9.75           | 7.50           | 5.60                                       | 6.04            | 4.62            | 38.00 | 1/2-14         | 3.31 |
| 34E600   | 137000  | C2                                  | 947                            | 3.00                      | 6.00 | 3.00 | 6.00 | 20.31            | 8.00           | 9.75           | 9.00           | 6.90                                       | 7.07            | 6.12            | 42.00 | 1/2-14         | 3.31 |
| 40E700   | 225000  | C2                                  | 1592                           | 3.75                      | 7.00 | 3.75 | 7.00 | 22.75            | 9.00           | 10.75          | 10.00          | 8.13                                       | 7.50            | 7.12            | 48.00 | 1/2-14         | 3.75 |
| Size     | M <sub>d</sub><br>Torque<br>Rating <sup>2 5</sup> | Rotor-<br>seal <sup>1</sup><br>Size | Weight<br><sup>3</sup><br>Mass | Drum Hub Bore             |      |      |      | Element Hub Bore |                |                |                | American National Pipe Thread <sup>4</sup> |                 |                 |       |                |      |
|          |   |                                     |                                | Min.                      | Max. | Min. | Max. | D                | D <sub>1</sub> | D <sub>6</sub> | D <sub>7</sub> | D <sub>37</sub>                            | D <sub>38</sub> | D <sub>45</sub> | H     | O <sub>4</sub> | X    |
|          |   |                                     |                                | Min.                      | Max. | Min. | Max. |                  |                |                |                |  |                 |                 |       |                |      |
| 12E475   | 1280  | B3                                  | 68                             | 38                        | 64   | 38   | 70   | 260              | 95             | 203            | 95             | 81   | 105             | 32              | 457   | 1/4-18         | 70   |
| 14E475   | 1810  | B3                                  | 83                             | 38                        | 76   | 38   | 76   | 273              | 95             | 203            | 108            | 82   | 109             | 44              | 508   | 1/4-18         | 70   |
| 16E475   | 2430  | B3                                  | 107                            | 44                        | 89   | 44   | 83   | 305              | 108            | 203            | 127            | 94   | 119             | 89              | 559   | 3/8-18         | 70   |
| 19E475   | 3560  | B3                                  | 148                            | 57                        | 114  | 57   | 121  | 367              | 146            | 203            | 152            | 117  | 130             | 89              | 635   | 3/8-18         | 68   |
| 21.5E475 | 4580  | B3                                  | 173                            | 57                        | 114  | 70   | 121  | 367              | 146            | 203            | 152            | 121  | 132             | 89              | 749   | 3/8-18         | 68   |
| 24E475   | 5880  | B3                                  | 233                            | 76                        | 165  | 70   | 133  | 459              | 165            | 203            | 229            | 132  | 135             | 162             | 813   | 3/8-18         | 68   |
| 27E475   | 7570  | B3                                  | 263                            | 70                        | 133  | 70   | 140  | 421              | 165            | 203            | 191            | 135  | 158             | 124             | 889   | 3/8-18         | 65   |
| 30E600   | 12000   | C2                                  | 335                            | 70                        | 140  | 70   | 140  | 440              | 165            | 248            | 191            | 142  | 153             | 117             | 965   | 1/2-14         | 84   |
| 34E600   | 15500   | C2                                  | 429                            | 76                        | 152  | 76   | 152  | 516              | 203            | 248            | 229            | 175  | 180             | 155             | 1067  | 1/2-14         | 84   |
| 40E700   | 25400   | C2                                  | 721                            | 95                        | 178  | 95   | 178  | 578              | 229            | 273            | 254            | 207  | 191             | 181             | 1219  | 1/2-14         | 95   |
| SI       | Nm<br>@ 5.2 bar                                   |                                     | kg                             | Dimensions in millimeters |      |      |      |                  |                |                |                |  |                 |                 |       |                |      |

**Notes:**

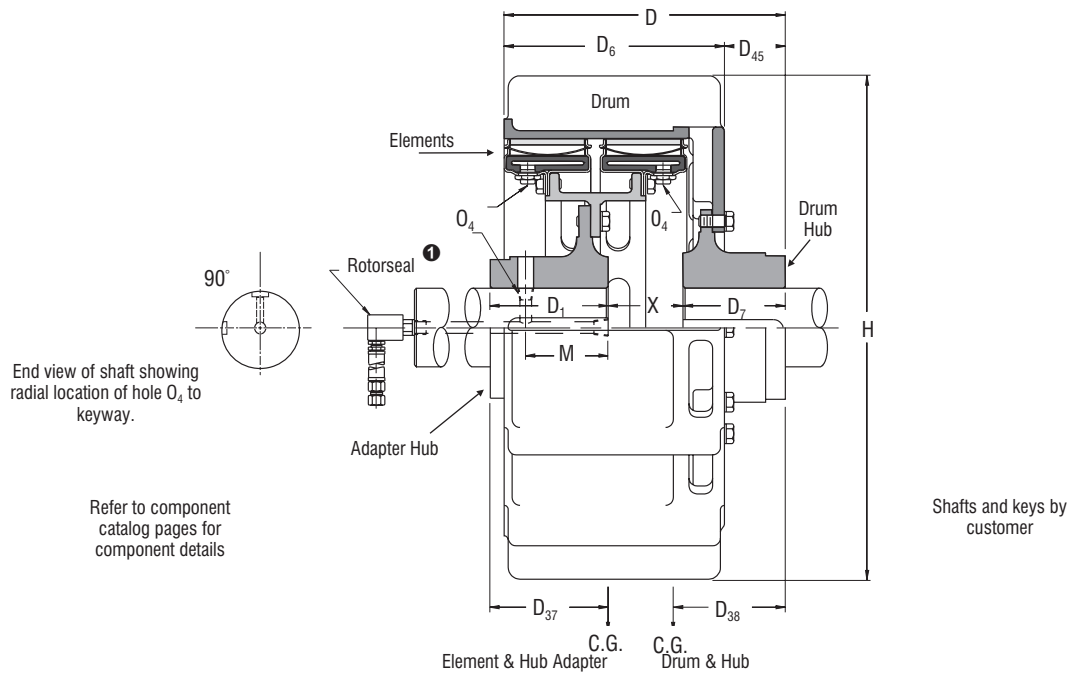
- 1 Refer to Rotorseal Section for mounting and dimension information.
- 2 Dynamic torque shown, static torque approximately 25% greater. Torque in each application is dependent upon release spring force, air pressure and speed.
- 3 Total weight or mass with minimum hub bores. Rotorseal and hose not included.
- 4 American National Pipe Thread
- 5 Figures shown are with teflon or graphite slip linings. Multiply values by 1.5 for standard linings, and contact factory for possible need of reinforced housings.

# Airflex® E Clutch Application



Form E 605

Coupling Arrangement – Dimensional Data  
Sizes Dual 12 to Dual 34



| English  | lbin @ 75 psi       | lb               | Dimensions in inches |                      |      |                  |      |       |                |                |                |                 |                 |                 |       |      |                |      |
|----------|---------------------|------------------|----------------------|----------------------|------|------------------|------|-------|----------------|----------------|----------------|-----------------|-----------------|-----------------|-------|------|----------------|------|
| 12E475   | 22600               | B3               | 253                  | 1.50                 | 2.50 | 2.50             | 3.75 | 15.25 | 6.38           | 14.00          | 3.75           | 3.20            | 6.31            | 1.25            | 18.00 | ⑤    | 1/4-18         | 2.50 |
| 14E475   | 32000               | B3               | 349                  | 1.50                 | 3.00 | 2.50             | 3.75 | 15.75 | 6.38           | 14.00          | 4.25           | 3.20            | 6.43            | 1.75            | 20.00 | ⑤    | 1/4-18         | 2.50 |
| 16E475   | 43000               | B3               | 457                  | 1.75                 | 3.50 | 1.50             | 3.00 | 16.50 | 4.25           | 14.00          | 5.00           | 3.88            | 7.25            | 2.50            | 22.00 | 5.25 | 3/8-18         | 4.88 |
| 19E475   | 63000               | C2               | 599                  | 2.25                 | 4.50 | 2.25             | 4.50 | 17.50 | 6.00           | 14.00          | 6.00           | 5.22            | 7.69            | 3.50            | 25.00 | 5.25 | 3/8-18         | 4.81 |
| 21.5E475 | 81000               | C2               | 670                  | 2.25                 | 4.50 | 2.25             | 4.50 | 17.50 | 6.00           | 14.00          | 6.00           | 5.40            | 7.50            | 3.50            | 29.50 | 5.25 | 3/8-18         | 4.88 |
| 24E475   | 104000              | C2               | 883                  | 3.00                 | 6.50 | 2.75             | 5.50 | 20.38 | 7.50           | 14.00          | 9.00           | 6.29            | 7.15            | 4.00            | 32.00 | 6.38 | 3/8-18         | 4.88 |
| 27E475   | 134000              | C2               | 1010                 | 2.75                 | 5.25 | 2.75             | 4.75 | 18.88 | 6.75           | 14.00          | 7.50           | 6.14            | 8.62            | 4.88            | 35.00 | 5.25 | 3/8-18         | 4.75 |
| 30E600   | 212000              | C2               | 1496                 | 2.75                 | 5.50 | 2.75             | 5.50 | 22.38 | 7.50           | 17.75          | 7.50           | 6.83            | 9.13            | 4.63            | 38.00 | 6.44 | 1/2-14         | 6.72 |
| 34E600   | 274000              | 3/4 RH           | 1747                 | 3.00                 | 6.00 | 2.75             | 5.50 | 23.88 | 7.50           | 17.75          | 9.00           | 7.01            | 10.88           | 6.13            | 42.00 | 6.44 | 1/2-14         | 6.72 |
| Size     | Mr Torque Rating ②⑥ | Rotorseal Size ① | Weight Mass          | Min.                 | Max. | Min.             | Max. | D     | D <sub>1</sub> | D <sub>6</sub> | D <sub>7</sub> | D <sub>37</sub> | D <sub>38</sub> | D <sub>45</sub> | H     | M    | O <sub>4</sub> | X    |
|          |                     |                  |                      | Drum Hub Bore        |      | Adapter Hub Bore |      |       |                |                |                |                 |                 |                 |       |      |                |      |
|          |                     |                  |                      | Min.                 | Max. | Min.             | Max. |       |                |                |                |                 |                 |                 |       |      |                |      |
| 12E475   | 2550                | B3               | 115                  | 38                   | 64   | 64               | 95   | 387   | 162            | 356            | 95             | 81              | 160             | 32              | 457   | ⑤    | 1/4-18         | 64   |
| 14E475   | 3620                | B3               | 158                  | 38                   | 76   | 64               | 95   | 400   | 162            | 356            | 108            | 81              | 163             | 44              | 508   | ⑤    | 1/4-18         | 64   |
| 16E475   | 4860                | B3               | 207                  | 44                   | 89   | 38               | 76   | 419   | 108            | 356            | 127            | 99              | 184             | 64              | 559   | 133  | 3/8-18         | 124  |
| 19E475   | 7120                | C2               | 271                  | 57                   | 114  | 57               | 114  | 445   | 152            | 356            | 152            | 133             | 195             | 89              | 635   | 133  | 3/8-18         | 122  |
| 21.5E475 | 9150                | C2               | 304                  | 57                   | 114  | 57               | 114  | 445   | 152            | 356            | 152            | 137             | 191             | 89              | 749   | 133  | 3/8-18         | 124  |
| 24E475   | 11800               | C2               | 400                  | 76                   | 165  | 70               | 140  | 518   | 191            | 356            | 229            | 160             | 182             | 102             | 813   | 162  | 3/8-18         | 124  |
| 27E475   | 15100               | C2               | 458                  | 70                   | 133  | 70               | 121  | 480   | 171            | 356            | 191            | 156             | 219             | 124             | 889   | 133  | 3/8-18         | 121  |
| 30E600   | 24000               | C2               | 678                  | 70                   | 140  | 70               | 140  | 568   | 191            | 451            | 191            | 173             | 232             | 118             | 965   | 164  | 1/2-14         | 171  |
| 34E600   | 31000               | 3/4 RH           | 791                  | 76                   | 152  | 70               | 140  | 607   | 191            | 451            | 229            | 178             | 276             | 156             | 1067  | 164  | 1/2-14         | 171  |
| SI       | Nm 5,2 bar          |                  | kg                   | Dimensions in inches |      |                  |      |       |                |                |                |                 |                 |                 |       |      |                |      |

**Notes:**

- ① Refer to Rotorseal Section for mounting and dimension information.
- ② Dynamic torque shown, static torque approximately 25% greater. Torque in each application is dependent upon release spring force, air pressure and speed.
- ③ Total weight or mass with minimum hub bores. Rotorseal and hose not included.
- ④ American National Pipe Thread
- ⑤ Locate radial shaft hole just beyond element hub.
- ⑥ Figures shown are with teflon or graphite slip linings. Multiply values by 1.5 for standard linings, and contact factory for possible need of reinforced housings.

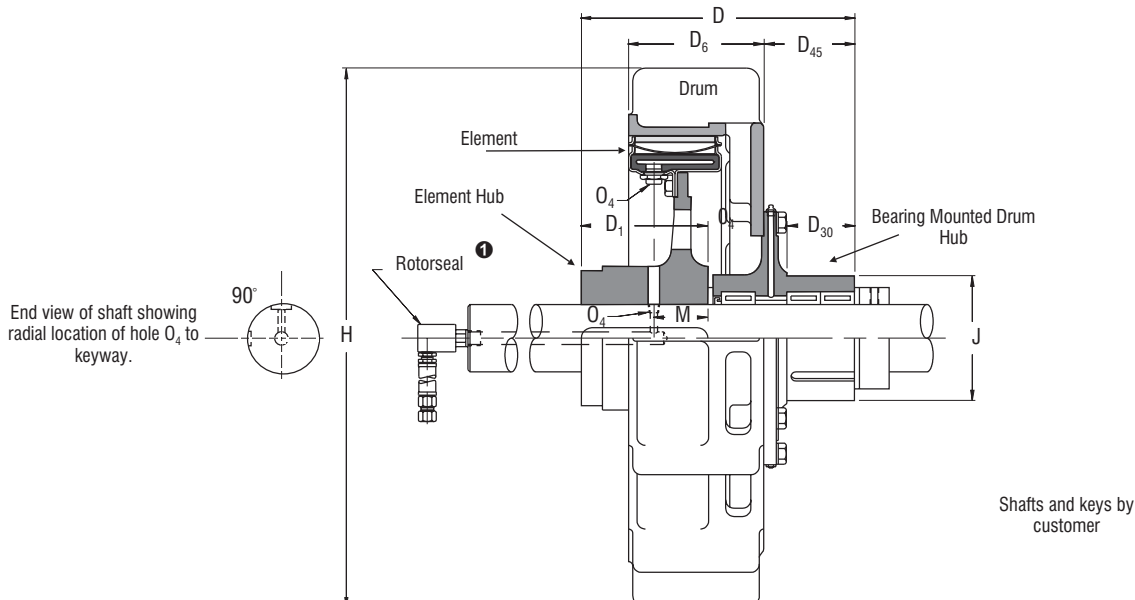


# Airflex® E Clutch Application



Form E 606

Bearing Mounted Arrangement – Dimensional Data  
Sizes 12 to 40



| English  | lb in<br>@ 75 psi                                | lb                          | Dimensions in inches                |            |      |       |                |                |                 |                 |       |                  |    |                             |  |
|----------|--|-----------------------------|-------------------------------------|------------|------|-------|----------------|----------------|-----------------|-----------------|-------|------------------|----|-----------------------------|--|
| 14E475   | 16000  | 210                         | B3                                  | 1.50       | 2.19 | 10.81 | 4.75           | 8.00           | 1.25            | 2.63            | 18.00 | 3.875            | ④  | 1/4-18                      |  |
| 16E475   | 21500  | 275                         | B3                                  | 1.75       | 3.50 | 12.44 | 5.25           | 8.00           | 2.50            | 3.88            | 22.00 | 5.875            | ④  | 3/8-18                      |  |
| 19E475   | 31500  | 390                         | B3                                  | 2.25       | 4.50 | 14.94 | 6.75           | 8.00           | 3.50            | 4.88            | 25.00 | 6.875            | ④  | 3/8-18                      |  |
| 21.5E475 | 40500  | 450                         | B3                                  | 2.25       | 4.50 | 14.94 | 6.75           | 8.00           | 3.50            | 4.88            | 29.50 | 6.875            | ④  | 3/8-18                      |  |
| 24E475   | 52000  | 650                         | B3                                  | 3.00       | 5.00 | 16.19 | 7.50           | 8.00           | 4.00            | 5.38            | 32.00 | 7.375            | ④  | 3/8-18                      |  |
| 27E475   | 67000  | 700                         | B3                                  | 2.75       | 5.25 | 17.19 | 7.50           | 8.00           | 4.88            | 6.38            | 35.00 | 8.375            | ④  | 3/8-18                      |  |
| 30E600   | 106000   | 900                         | C2                                  | 2.75       | 5.50 | 18.19 | 7.50           | 9.75           | 4.88            | 6.38            | 38.00 | 8.875            | ④  | 1/2-14                      |  |
| 34E600   | 137000   | 1160                        | C2                                  | 3.00       | 6.00 | 21.19 | 9.00           | 9.75           | 6.38            | 7.88            | 42.00 | 9.375            | ④  | 1/2-14                      |  |
| 40E700   | 225000   | 1920                        | C2                                  | 5.00       | 7.00 | 23.63 | 10.00          | 10.75          | 7.38            | 8.88            | 48.00 | 10.875           | ④  | 1/2-14                      |  |
| Size     | M <sub>e</sub><br>Torque<br>Rating <sup>②⑥</sup> | Weight <sup>③</sup><br>Mass | Rotor-<br>seal<br>Size <sup>①</sup> | Bore Range |      | D     | D <sub>1</sub> | D <sub>6</sub> | D <sub>30</sub> | D <sub>45</sub> | H     | J <sub>MAX</sub> | M  | O <sub>4</sub> <sup>⑤</sup> |  |
|          |  |                             |                                     | Min.       | Max. |       |                |                |                 |                 |       |                  |    |                             |  |
| 12E475   | 1280   | 75                          | B3                                  | 38         | 56   | 275   | 121            | 203            | 32              | 67              | 457   | 98,4             | ④  | 1/4-18                      |  |
| 14E475   | 1810   | 95                          | B3                                  | 38         | 76   | 287   | 121            | 203            | 44              | 80              | 508   | 149,2            | ④  | 1/4-18                      |  |
| 16E475   | 2430   | 125                         | B3                                  | 44         | 89   | 316   | 133            | 203            | 64              | 99              | 559   | 149,2            | 80 | 3/8-18                      |  |
| 19E475   | 3560   | 177                         | B3                                  | 57         | 114  | 379   | 171            | 203            | 89              | 124             | 635   | 174,6            | 83 | 3/8-18                      |  |
| 21.5E475 | 4580   | 204                         | B3                                  | 57         | 114  | 379   | 171            | 203            | 89              | 124             | 749   | 174,6            | 81 | 3/8-18                      |  |
| 24E475   | 5880   | 294                         | B3                                  | 76         | 127  | 411   | 191            | 203            | 102             | 137             | 813   | 187,3            | 84 | 3/8-18                      |  |
| 27E475   | 7570   | 317                         | B3                                  | 70         | 133  | 437   | 191            | 203            | 124             | 162             | 889   | 212,7            | 84 | 3/8-18                      |  |
| 30E600   | 12000  | 408                         | C2                                  | 70         | 140  | 462   | 191            | 248            | 124             | 162             | 965   | 225,4            | 95 | 1/2-14                      |  |
| 34E600   | 15500  | 525                         | C2                                  | 76         | 152  | 538   | 229            | 248            | 162             | 200             | 1067  | 238,1            | 95 | 1/2-14                      |  |
| 40E700   | 25400  | 870                         | C2                                  | 127        | 178  | 600   | 254            | 273            | 187             | 226             | 1219  | 276,2            | 99 | 1/2-14                      |  |
| SI       | Nm<br>@ 5,2 bar                                  | kg                          | Dimensions in millimeters           |            |      |       |                |                |                 |                 |       |                  |    |                             |  |

**Notes:**

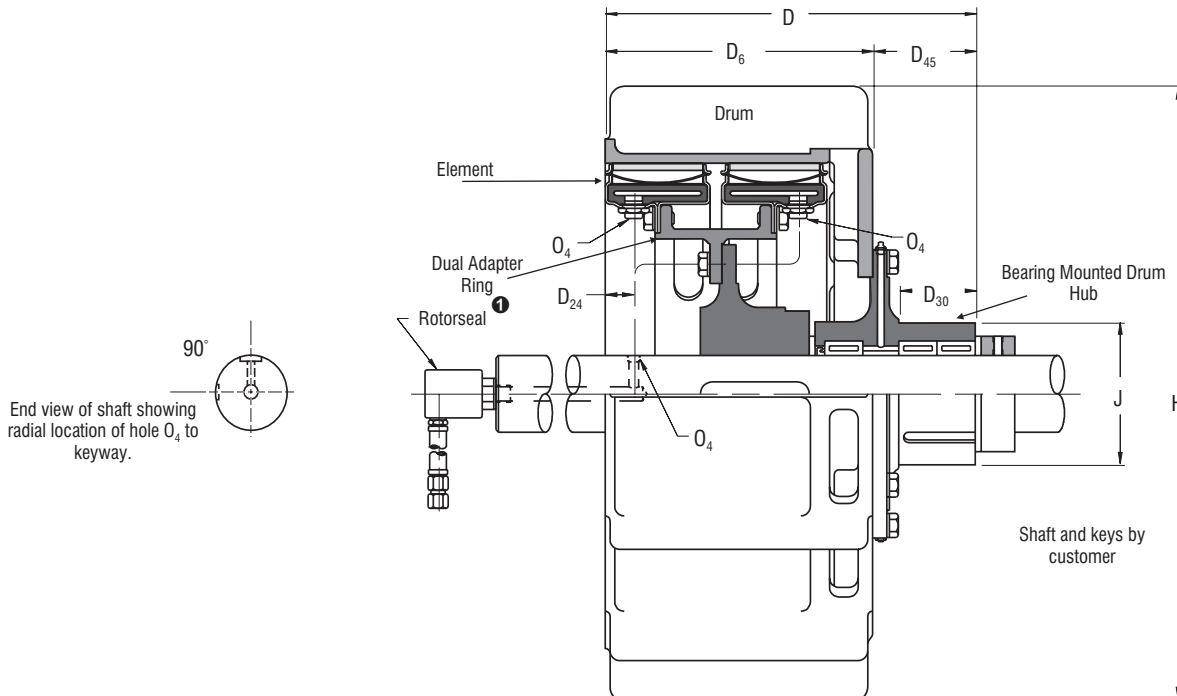
- ① Refer to Rotorseal Section for mounting and dimension information.
- ② Dynamic torque shown, static torque approximately 25% greater. Torque in each application is dependent upon release spring force, air pressure and speed.
- ③ Total weight or mass with minimum hub bores. Rotorseal and hose not included.
- ④ Locate radial shaft hole just beyond element hub.
- ⑤ American National Pipe Thread
- ⑥ Figures shown are with slip linings. Multiply values by 1.5 for standard linings, and contact factory for possible need of reinforced housings.

# Airflex® E Clutch Application



Form E 607

Bearing Mounted Arrangement – Dimensional Data  
Sizes Dual 12 to Dual 34



| English  | lb in<br>@ 75 psi                                | lb                          | Dimensions in inches                |            |      |       |                |                 |                 |                 |       |                  |                             |
|----------|--|-----------------------------|-------------------------------------|------------|------|-------|----------------|-----------------|-----------------|-----------------|-------|------------------|-----------------------------|
| 12E475   | 22600  | 270                         | B3                                  | 1.50       | 2.19 | 16.63 | 14.00          | 1.47            | 1.25            | 2.63            | 18.00 | 3.875            | 1/4-18                      |
| 14E475   | 32000  | 450                         | B3                                  | 1.50       | 3.38 | 17.13 | 14.00          | 1.47            | 1.75            | 3.13            | 20.00 | 5.875            | 1/4-18                      |
| 16E475   | 43000  | 560                         | B3                                  | 1.75       | 3.50 | 17.88 | 14.00          | 1.47            | 2.50            | 3.88            | 22.00 | 5.875            | 3/8-18                      |
| 19E475   | 63000  | 690                         | C2                                  | 2.25       | 4.75 | 18.88 | 14.00          | 1.50            | 3.50            | 4.88            | 25.00 | 6.875            | 3/8-18                      |
| 21.5E475 | 81000  | 840                         | C2                                  | 2.75       | 4.75 | 18.88 | 14.00          | 1.50            | 3.50            | 4.88            | 29.50 | 6.875            | 3/8-18                      |
| 24E475   | 104000   | 1080                        | C2                                  | 2.75       | 5.00 | 19.38 | 14.00          | 1.50            | 4.00            | 5.38            | 32.00 | 7.375            | 3/8-18                      |
| 27E475   | 134000   | 1130                        | C2                                  | 2.75       | 6.00 | 20.38 | 14.00          | 1.50            | 4.88            | 6.38            | 35.00 | 8.375            | 3/8-18                      |
| 30E475   | 212000   | 1660                        | C2                                  | 2.75       | 7.00 | 24.13 | 17.75          | 1.88            | 4.88            | 6.38            | 38.00 | 8.875            | 1/2-14                      |
| 34E475   | 274000   | 1960                        | 3/4 RH                              | 3.00       | 7.00 | 25.63 | 17.75          | 1.88            | 6.38            | 7.88            | 42.00 | 9.375            | 1/2-14                      |
| Size     | M <sub>r</sub><br>Torque<br>Rating <sup>②⑤</sup> | Weight <sup>③</sup><br>Mass | Rotor-<br>seal<br>Size <sup>①</sup> | Min. Max.  |      | D     | D <sub>6</sub> | D <sub>24</sub> | D <sub>30</sub> | D <sub>45</sub> | H     | J <sub>MAX</sub> | O <sub>4</sub> <sup>④</sup> |
|          |  |                             |                                     | Bore Range |      |       |                |                 |                 |                 |       |                  |                             |
|          |  |                             |                                     | Min.       | Max. |       |                |                 |                 |                 |       |                  |                             |
| 12E475   | 2550   | 122                         | B3                                  | 38         | 56   | 422   | 356            | 37              | 32              | 67              | 457   | 98,4             | 1/4-18                      |
| 14E475   | 3620   | 204                         | B3                                  | 38         | 86   | 435   | 356            | 37              | 44              | 80              | 508   | 149,2            | 1/4-18                      |
| 16E475   | 4860   | 254                         | B3                                  | 44         | 89   | 454   | 356            | 37              | 64              | 99              | 559   | 149,2            | 3/8-18                      |
| 19E475   | 7120   | 313                         | C2                                  | 57         | 121  | 480   | 356            | 38              | 89              | 124             | 635   | 174,6            | 3/8-18                      |
| 21.5E475 | 9150   | 381                         | C2                                  | 70         | 121  | 480   | 356            | 38              | 89              | 124             | 749   | 174,6            | 3/8-18                      |
| 24E475   | 11800  | 489                         | C2                                  | 70         | 127  | 492   | 356            | 38              | 102             | 137             | 813   | 187,3            | 3/8-18                      |
| 27E475   | 15100  | 512                         | C2                                  | 70         | 152  | 518   | 356            | 38              | 124             | 162             | 889   | 212,7            | 3/8-18                      |
| 30E475   | 24000  | 752                         | C2                                  | 70         | 178  | 613   | 451            | 48              | 124             | 162             | 965   | 225,4            | 1/2-14                      |
| 34E475   | 31000  | 888                         | 3/4 RH                              | 76         | 178  | 651   | 451            | 48              | 162             | 200             | 1067  | 238,1            | 1/2-14                      |
| SI       | Nm<br>@ 5,2 bar                                  | kg                          | Dimensions in millimeters           |            |      |       |                |                 |                 |                 |       |                  |                             |

**Notes:**

- ① Refer to Rotorseal Section for mounting and dimension information.
- ② Dynamic torque shown, static torque approximately 25% greater. Torque in each application is dependent upon release spring force, air pressure and speed.
- ③ Total weight or mass with minimum hub bores. Rotorseal and hose not included.
- ④ American National Pipe Thread
- ⑤ Figures shown are with slip linings. Multiply values by 1.5 for standard linings, and contact factory for possible need of reinforced housings.

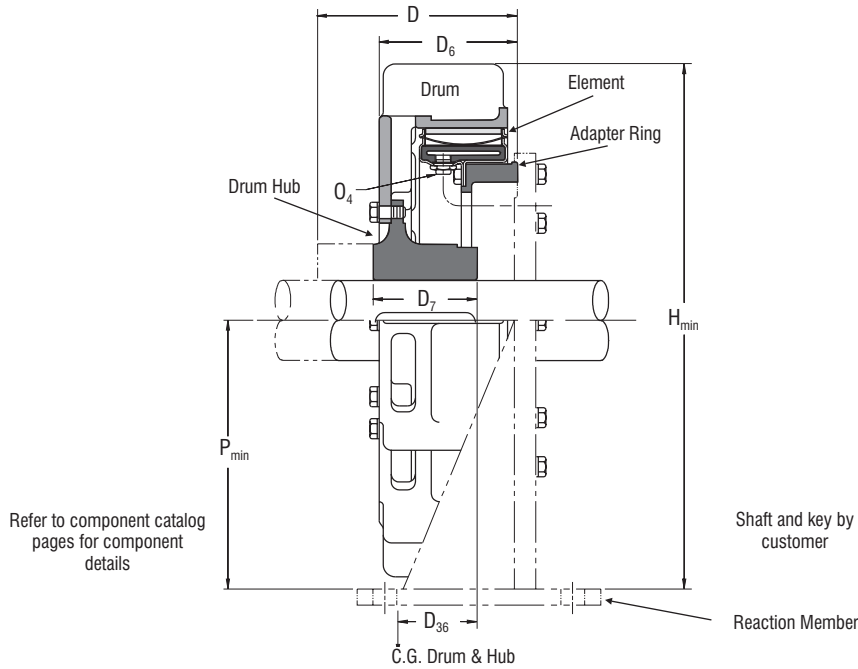
# Airflex® E Brake Application



Form E 608

Air-Cooled Arrangement – Dimensional Data

Sizes 12 to 40



| English  | lb in<br>@ 75 psi                     | lb                          | Dimensions in inches      |      |        |                |                |                 |       |                |       |
|----------|---------------------------------------|-----------------------------|---------------------------|------|--------|----------------|----------------|-----------------|-------|----------------|-------|
| 12E475   | 11300                                 | 151                         | 1.50                      | 2.50 | 9.81   | 8.56           | 3.75           | 3.79            | 18.50 | 1/4-18         | 9.50  |
| 14E475   | 16000                                 | 186                         | 1.50                      | 3.00 | 10.31  | 8.56           | 4.25           | 3.86            | 20.50 | 1/4-18         | 10.50 |
| 16E475   | 21500                                 | 238                         | 1.75                      | 3.50 | 11.06  | 8.56           | 5.00           | 3.92            | 22.50 | 3/8-18         | 11.50 |
| 19E475   | 31500                                 | 306                         | 2.25                      | 4.50 | 12.00  | 8.50           | 6.00           | 3.59            | 25.50 | 3/8-18         | 13.00 |
| 21.5E475 | 40500                                 | 379                         | 2.25                      | 4.50 | 12.06  | 8.56           | 6.00           | 3.47            | 30.25 | 3/8-18         | 15.50 |
| 24E475   | 52000                                 | 494                         | 3.00                      | 6.50 | 15.75  | 8.63           | 9.00           | 3.42            | 32.75 | 3/8-18         | 16.75 |
| 27E475   | 67000                                 | 573                         | 2.75                      | 5.25 | 13.50  | 8.63           | 7.50           | 3.39            | 35.75 | 3/8-18         | 18.25 |
| 30E600   | 106000                                | 794                         | 2.75                      | 5.50 | 15.03  | 10.41          | 7.50           | 3.81            | 38.75 | 1/2-14         | 19.75 |
| 34E600   | 137000                                | 1010                        | 3.00                      | 6.00 | 16.53  | 10.41          | 9.00           | 3.83            | 42.75 | 1/2-14         | 21.75 |
| 40E700   | 225000                                | 1660                        | 3.75                      | 7.00 | 18.53  | 11.41          | 10.00          | 3.98            | 48.75 | 1/2-14         | 24.75 |
| Size     | M,<br>Torque<br>Rating <sup>① ⑤</sup> | Weight <sup>②</sup><br>Mass | Min. Max.                 |      | ③<br>D | D <sub>6</sub> | D <sub>7</sub> | D <sub>36</sub> | H     | ④              |       |
|          |                                       |                             | Bore Range                |      |        |                |                |                 |       | O <sub>4</sub> | P     |
|          |                                       |                             | Min.                      | Max. |        |                |                |                 |       |                |       |
| 12E475   | 1280                                  | 68                          | 38                        | 64   | 249    | 217            | 95             | 96              | 470   | 1/4-18         | 241   |
| 14E475   | 1810                                  | 84                          | 38                        | 76   | 262    | 217            | 108            | 98              | 521   | 1/4-18         | 267   |
| 16E475   | 2430                                  | 108                         | 44                        | 89   | 281    | 217            | 127            | 100             | 572   | 3/8-18         | 292   |
| 19E475   | 3560                                  | 139                         | 57                        | 114  | 305    | 216            | 152            | 91              | 648   | 3/8-18         | 330   |
| 21.5E475 | 4580                                  | 172                         | 57                        | 114  | 306    | 217            | 152            | 88              | 768   | 3/8-18         | 394   |
| 24E475   | 5880                                  | 224                         | 76                        | 165  | 400    | 219            | 229            | 87              | 832   | 3/8-18         | 425   |
| 27E475   | 7570                                  | 260                         | 70                        | 133  | 343    | 219            | 191            | 86              | 908   | 3/8-18         | 464   |
| 30E600   | 12000                                 | 360                         | 70                        | 140  | 382    | 264            | 191            | 97              | 984   | 1/2-14         | 502   |
| 34E600   | 15500                                 | 458                         | 76                        | 152  | 420    | 264            | 229            | 97              | 1086  | 1/2-14         | 552   |
| 40E700   | 25400                                 | 752                         | 95                        | 178  | 471    | 290            | 254            | 101             | 1238  | 1/2-14         | 629   |
| SI       | N m<br>@ 5.2 bar                      | kg                          | Dimensions in millimeters |      |        |                |                |                 |       |                |       |

**Notes:**

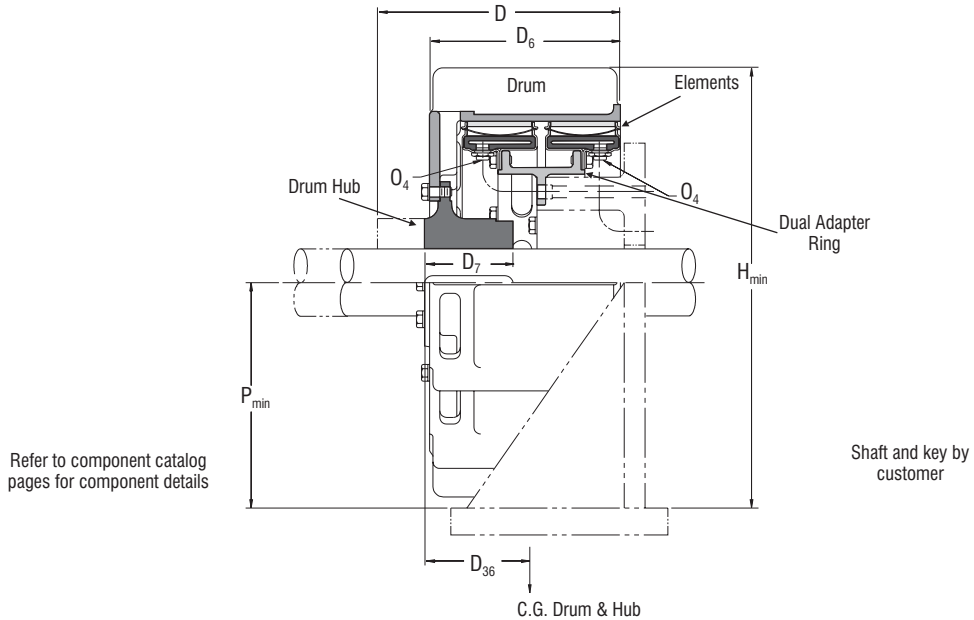
- ① Dynamic torque shown, static torque approximately 25% greater. Torque in each application is dependent upon release spring force, air pressure and speed.
- ② Total weight or mass with minimum hub bores.
- ③ Maximum length with drum hub reverse mounted.
- ④ American National Pipe Thread
- ⑤ Figures shown are with slip linings. Multiply values by 1.5 for standard linings, and contact factory for possible need of reinforced housings.

# Airflex® E Brake Application



Form E 609

Air-Cooled Arrangement – Dimensional Data  
Sizes Dual 12 to Dual 34



| English  | lb-in<br>@75 psi                      | lb                  | Dimensions in inches      |      |       |                |                |                 |       |                |       |
|----------|---------------------------------------|---------------------|---------------------------|------|-------|----------------|----------------|-----------------|-------|----------------|-------|
| 12E475   | 22600                                 | 253                 | 1.50                      | 2.50 | 15.25 | 14.00          | 3.75           | 3.52            | 18.50 | 1/4-18         | 9.50  |
| 14E475   | 32000                                 | 349                 | 1.50                      | 3.00 | 15.75 | 14.00          | 4.25           | 3.81            | 20.50 | 1/4-18         | 10.50 |
| 16E475   | 43000                                 | 429                 | 1.75                      | 3.50 | 16.50 | 14.00          | 5.00           | 4.35            | 22.50 | 3/8-18         | 11.50 |
| 19E475   | 63000                                 | 551                 | 2.25                      | 4.50 | 17.50 | 14.00          | 6.00           | 5.00            | 25.50 | 3/8-18         | 13.00 |
| 21.5E475 | 81000                                 | 608                 | 2.25                      | 4.50 | 17.50 | 14.00          | 6.00           | 5.02            | 30.25 | 3/8-18         | 15.50 |
| 24E475   | 104000                                | 767                 | 3.00                      | 6.50 | 20.38 | 14.00          | 9.00           | 5.12            | 32.75 | 3/8-18         | 16.75 |
| 27E475   | 134000                                | 934                 | 2.75                      | 5.25 | 18.88 | 14.00          | 7.50           | 6.01            | 35.75 | 3/8-18         | 18.25 |
| 30E600   | 212000                                | 1363                | 2.75                      | 5.50 | 22.38 | 17.75          | 7.50           | 6.35            | 38.75 | 1/2-14         | 19.75 |
| 34E600   | 274000                                | 1622                | 3.00                      | 6.00 | 23.88 | 17.75          | 9.00           | 7.17            | 42.75 | 1/2-14         | 21.75 |
| 40E700   | 450000                                | 2788                | 3.75                      | 7.00 | 27.13 | 20.00          | 10.00          | 7.71            | 48.75 | 1/2-14         | 24.75 |
| Size     | Mr<br>Torque<br>Rating <sup>① ⑤</sup> | Weight<br>②<br>Mass | Min. Max.                 |      | D     | D <sub>6</sub> | D <sub>7</sub> | D <sub>36</sub> | H     | O <sub>4</sub> | P     |
|          |                                       |                     | Bore Range                |      |       |                |                |                 |       |                |       |
|          |                                       |                     | Min.                      | Max. |       |                |                |                 |       |                |       |
| 12E475   | 2550                                  | 115                 | 38                        | 64   | 387   | 356            | 95             | 89              | 470   | 1/4-18         | 241   |
| 14E475   | 3620                                  | 158                 | 38                        | 76   | 400   | 356            | 108            | 97              | 521   | 1/4-18         | 267   |
| 16E475   | 4860                                  | 194                 | 44                        | 89   | 419   | 356            | 127            | 110             | 572   | 3/8-18         | 292   |
| 19E475   | 7120                                  | 250                 | 57                        | 114  | 445   | 356            | 152            | 127             | 648   | 3/8-18         | 330   |
| 21.5E475 | 9150                                  | 275                 | 57                        | 114  | 445   | 356            | 152            | 128             | 768   | 3/8-18         | 394   |
| 24E475   | 11800                                 | 347                 | 76                        | 165  | 518   | 356            | 229            | 130             | 832   | 3/8-18         | 425   |
| 27E475   | 15100                                 | 423                 | 70                        | 133  | 479   | 356            | 191            | 153             | 908   | 3/8-18         | 464   |
| 30E600   | 24000                                 | 617                 | 70                        | 140  | 568   | 451            | 191            | 161             | 984   | 1/2-14         | 502   |
| 34E600   | 31000                                 | 735                 | 76                        | 152  | 606   | 451            | 229            | 182             | 1086  | 1/2-14         | 552   |
| 40E700   | 50900                                 | 1263                | 95                        | 178  | 689   | 508            | 254            | 196             | 1238  | 1/2-14         | 629   |
| SI       | Nm<br>@ 5,2 bar                       | kg                  | Dimensions in millimeters |      |       |                |                |                 |       |                |       |

**Notes:**

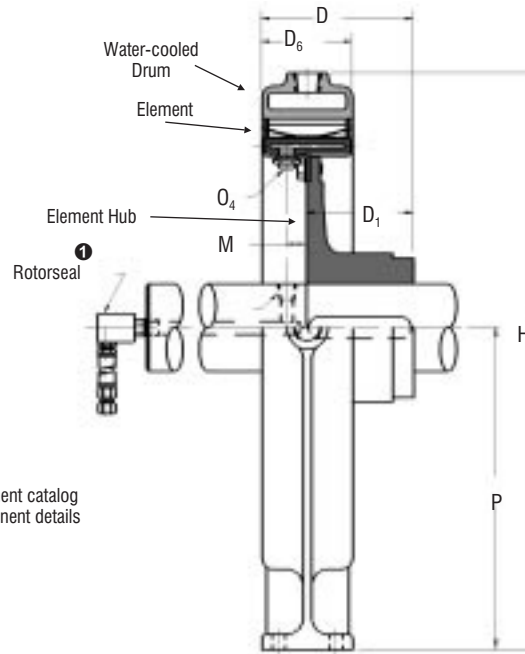
- ① Dynamic torque shown, static torque approximately 25% greater. Torque in each application is dependent upon release spring force, air pressure and speed.
- ② Total weight or mass with minimum hub bores.
- ③ Maximum length with drum hub reverse mounted.
- ④ American National Pipe Thread
- ⑤ Figures shown are with slip linings. Multiply values by 1.5 for standard linings, and contact factory for possible need of reinforced housings.

# Airflex® E Brake Application



Form E 610

Water cooled Arrangement – Dimensional Data – Sizes 12 to 34



Refer to component catalog pages for component details

Shaft and key by customer

| English  | lb in @ 75 psi                             | B3                          | lb                         | Dimensions in inches      |      |       |                |                |       |      |                |       |
|----------|--|-----------------------------|----------------------------|---------------------------|------|-------|----------------|----------------|-------|------|----------------|-------|
| 12E475   | 11300                                      | B3                          | 149                        | 1.50                      | 2.75 | 6.47  | 3.75           | 5.50           | 21.13 | 1.22 | 1/4-18         | 12.50 |
| 14E475   | 16000                                      | B3                          | 165                        | 1.50                      | 3.00 | 6.47  | 3.75           | 5.50           | 23.13 | 1.22 | 1/4-18         | 13.50 |
| 16E475   | 21500                                      | B3                          | 234                        | 1.75                      | 3.25 | 6.97  | 4.25           | 5.50           | 28.00 | 1.22 | 3/8-18         | 16.00 |
| 19E475   | 31500                                      | B3                          | 280                        | 2.25                      | 4.75 | 8.94  | 5.75           | 5.50           | 28.13 | 1.19 | 3/8-18         | 16.00 |
| 21.5E475 | 40500                                      | B3                          | 324                        | 2.75                      | 4.75 | 8.44  | 5.75           | 5.50           | 30.63 | 1.19 | 3/8-18         | 17.25 |
| 24E475   | 52000                                      | B3                          | 391                        | 2.75                      | 5.25 | 9.19  | 6.50           | 5.50           | 33.13 | 1.19 | 3/8-18         | 18.50 |
| 27E475   | 67000                                      | B3                          | 443                        | 2.75                      | 5.50 | 9.19  | 6.50           | 5.50           | 36.13 | 1.19 | 3/8-18         | 20.00 |
| 30E600   | 106000                                     | C2                          | 552                        | 2.75                      | 5.50 | 9.94  | 6.50           | 7.00           | 39.13 | 1.56 | 1/2-14         | 21.50 |
| 34E600   | 137000                                     | C2                          | 655                        | 3.00                      | 6.00 | 11.44 | 8.00           | 7.00           | 43.13 | 1.56 | 1/2-14         | 23.50 |
| Size     | M, Torque Rating <sup>2</sup> <sup>5</sup> | Rotorseal Size <sup>1</sup> | Weight <sup>3</sup> / Mass | Bore Range                |      | D     | D <sub>1</sub> | D <sub>6</sub> | H     | M    | O <sub>4</sub> | P     |
|          |  |                             |                            | Min.                      | Max. |       |                |                |       |      |                |       |
|          |  |                             |                            | Min.                      | Max. |       |                |                |       |      |                |       |
| 12E475   | 1280                                       | B3                          | 67                         | 38                        | 70   | 164   | 95             | 140            | 537   | 31   | 1/4-18         | 318   |
| 14E475   | 1810                                       | B3                          | 75                         | 38                        | 76   | 164   | 95             | 140            | 587   | 31   | 1/4-18         | 343   |
| 16E475   | 2430                                       | B3                          | 106                        | 44                        | 83   | 177   | 108            | 140            | 711   | 31   | 3/8-18         | 406   |
| 19E475   | 3560                                       | B3                          | 127                        | 57                        | 121  | 227   | 146            | 140            | 714   | 30   | 3/8-18         | 406   |
| 21.5E475 | 4580                                       | B3                          | 147                        | 70                        | 121  | 214   | 146            | 140            | 778   | 30   | 3/8-18         | 438   |
| 24E475   | 5880                                       | B3                          | 177                        | 70                        | 133  | 233   | 165            | 140            | 841   | 30   | 3/8-18         | 470   |
| 27E475   | 7570                                       | B3                          | 201                        | 70                        | 140  | 233   | 165            | 140            | 918   | 30   | 3/8-18         | 508   |
| 30E600   | 12000                                      | C2                          | 250                        | 70                        | 140  | 252   | 165            | 178            | 994   | 40   | 1/2-14         | 546   |
| 34E600   | 15500                                      | C2                          | 297                        | 76                        | 152  | 291   | 203            | 178            | 1095  | 40   | 1/2-14         | 597   |
| SI       | N m @ 5,2 bar                              |                             | kg                         | Dimensions in millimeters |      |       |                |                |       |      |                |       |

## Notes:

- <sup>1</sup> Refer to Rotorseal Section for mounting and dimension information.
- <sup>2</sup> Dynamic torque shown, static torque approximately 25% greater. Torque in each application is dependent upon release spring force, air pressure and speed.
- <sup>3</sup> Total weight or mass with minimum hub bores. Rotorseal and hose not included.
- <sup>4</sup> American National Pipe Thread
- <sup>5</sup> Figures shown are with teflon or graphite slip linings. Multiply values by 1.5 for standard linings, and contact factory for possible need of reinforced housings.

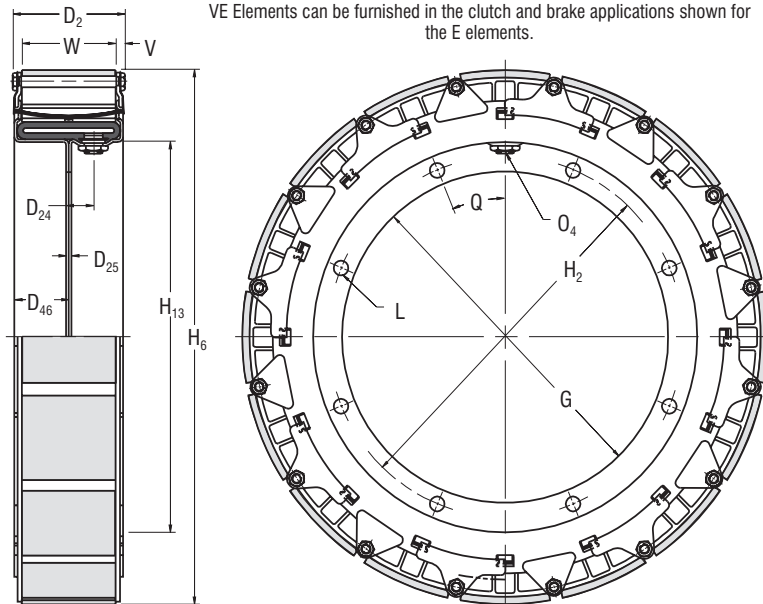
# Airflex® VE Element



Form VE 602

Dimensional Data

Sizes 19 to 27



| English        |             | lb in<br>@ 75 psi               | Dimensions in inches      |                 |                 |                 |        |                |                |                 |          |      |                |       |      |           |      |
|----------------|-------------|---------------------------------|---------------------------|-----------------|-----------------|-----------------|--------|----------------|----------------|-----------------|----------|------|----------------|-------|------|-----------|------|
| <b>19VE475</b> | 143215      | 25500                           | 5.69                      | 1.25            | 0.19            | 2.72            | 9.625  | 10.750         | 18.91          | 11.81           | 8        | 0.50 | 3/8-18         | 22.50 | 0.44 | 12        | 4.69 |
| <b>24VE475</b> | 143216      | 45200                           | 5.69                      | 1.25            | 0.25            | 2.75            | 14.250 | 15.750         | 23.91          | 17.25           | 8        | 0.75 | 3/8-18         | 22.50 | 0.44 | 14        | 4.69 |
| <b>27VE475</b> | 143334      | 58500                           | 5.69                      | 1.25            | 0.27            | 2.75            | 16.750 | 18.250         | 26.91          | 19.73           | 10       | 0.75 | 3/8-18         | 18.00 | 0.44 | 16        | 4.75 |
| Size           | Part Number | M <sub>t</sub><br>Torque Rating | D <sub>2</sub>            | D <sub>24</sub> | D <sub>25</sub> | D <sub>46</sub> | G      | H <sub>2</sub> | H <sub>6</sub> | H <sub>13</sub> | No. Dia. |      | Q <sub>4</sub> | Q     | V    | No. Width |      |
|                |             |                                 |                           |                 |                 |                 |        |                |                |                 | L        |      |                |       |      | L         |      |
|                |             |                                 |                           |                 |                 |                 |        |                |                |                 | No.      | Dia. | No.            | Width |      |           |      |
| <b>19VE475</b> | 143215      | 2880                            | 145                       | 32              | 5               | 69              | 244,5  | 273,1          | 480            | 300             | 8        | 13   | 3/8-18         | 22,50 | 11   | 12        | 119  |
| <b>24VE475</b> | 143216      | 5110                            | 145                       | 32              | 6               | 70              | 362,0  | 400,1          | 607            | 438             | 8        | 19   | 3/8-18         | 22,50 | 11   | 14        | 119  |
| <b>27VE475</b> | 143334      | 6610                            | 145                       | 32              | 7               | 70              | 425,5  | 463,6          | 684            | 501             | 10       | 19   | 3/8-18         | 18,00 | 11   | 16        | 121  |
| SI             |             | Nm<br>@ 5,2 bar                 | Dimensions in millimeters |                 |                 |                 |        |                |                |                 |          |      |                |       |      |           |      |

| English        |             | lb in<br>@ 75 psi               | rpm           | psi/rpm <sup>2</sup>               | lb ft <sup>2</sup> | lb   | in <sup>2</sup> | inches           |      | in <sup>3</sup>              | in                    |
|----------------|-------------|---------------------------------|---------------|------------------------------------|--------------------|------|-----------------|------------------|------|------------------------------|-----------------------|
| <b>19VE475</b> | 143215      | 25500                           | 1100          | 3.3 E-06                           | 20                 | 58   | 230             | 0.43             | 0.25 | 70                           | 19.13                 |
| <b>24VE475</b> | 143216      | 45200                           | 875           | 5.6 E-06                           | 61                 | 77   | 295             | 0.37             | 0.18 | 100                          | 24.19                 |
| <b>27VE475</b> | 143334      | 58500                           | 775           | 5.9 E-06                           | 75                 | 90   | 333             | 0.37             | 0.25 | 110                          | 27.25                 |
| Size           | Part Number | M <sub>t</sub><br>Torque Rating | Maximum Speed | C <sub>c</sub><br>Centrifugal Gain | Wk <sup>2</sup>    |      | Friction Area   | New Worn         |      | Air Tube Cavity <sup>5</sup> | Maximum Drum Diameter |
|                |             |                                 |               |                                    | J                  | Mass |                 | Lining Thickness |      |                              |                       |
|                |             |                                 |               |                                    |                    |      |                 | New              | Worn |                              |                       |
| <b>19VE475</b> | 143215      | 2880                            | 1100          | 0,2 E-06                           | 0,84               | 26   | 1484            | 11               | 6    | 1,1                          | 486                   |
| <b>24VE475</b> | 143216      | 5110                            | 875           | 0,4 E-06                           | 2,56               | 35   | 1903            | 9                | 5    | 1,6                          | 614                   |
| <b>27VE475</b> | 143334      | 6610                            | 775           | 0,4 E-06                           | 3,15               | 41   | 2148            | 9                | 6    | 1,8                          | 692                   |
| SI             |             | Nm<br>@ 5,2 bar                 | rpm           | bar/rpm <sup>2</sup>               | kg m <sup>2</sup>  | kg   | cm <sup>2</sup> | millimeters      |      | dm <sup>3</sup>              | mm                    |

**Notes:**

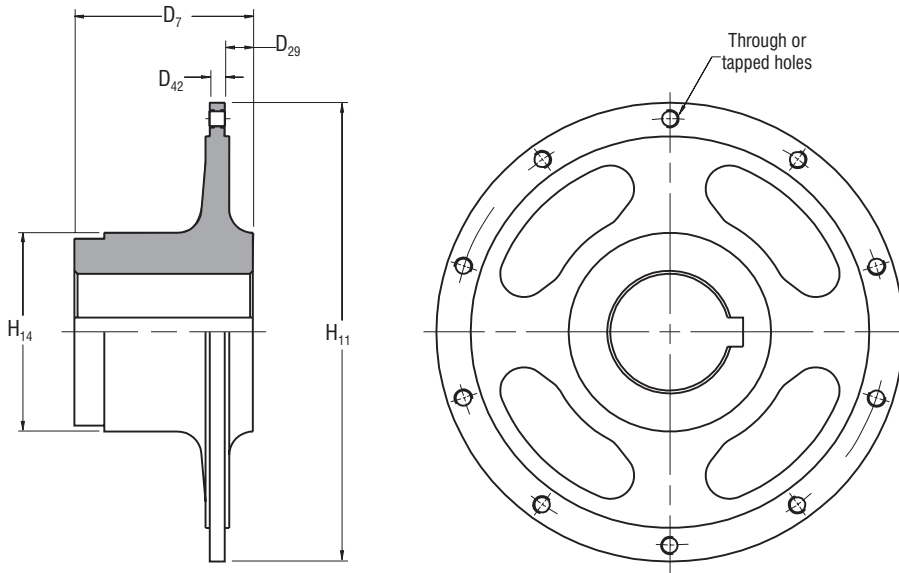
- ① Refers to basic part number only. When ordering, the release spring force and type of friction linings must be specified.
- ② Dynamic torque shown, static torque approximately 25% greater. Torque in each application is dependent upon release spring force, air pressure and speed.
- ③ Tolerances for sizes:  
12 thru 27  
+0.010/-0.000 in (+0,25/-0,00 mm)  
30 thru 40  
+0.005/-0.000 in (+0,13/-0,00 mm)
- ④ American National Pipe Thread
- ⑤ Drum contact with worn shoes.
- ⑥ Figures shown are with teflon or graphite slip linings. Multiply values by 1.5 for standard linings, and contact factory for possible need of reinforced housings.
- ⑦ Refer to page C-42 for maximum idle RPM.

# Airflex® E and VE Mounting Components



Form E 611

Element Hubs – Dimensional and Technical Data – Sizes 12 to 40



| English  | Thru Holes  | Tapped Holes | lb             | lb ft <sup>2</sup>   | Dimensions in inches      |                 |                 |                 |                 |
|----------|-------------|--------------|----------------|----------------------|---------------------------|-----------------|-----------------|-----------------|-----------------|
| 12E475   | 402241      | 402242       | 20             | 0.8                  | 4.75                      | 1.13            | 0.63            | 7.75            | 4.38            |
| 14E475   | 402244      | 402245       | 22             | 1                    | 4.75                      | 1.13            | 0.63            | 9.50            | 5.00            |
| 16E475   | 402247      | 402248       | 36             | 3                    | 5.25                      | 1.13            | 0.75            | 11.63           | 5.50            |
| 19E475   | 401476      | 401477       | 74             | 6                    | 6.75                      | 1.19            | 0.63            | 14.56           | 7.50            |
| 21.5E475 | 401478      | 401479       | 86             | 12                   | 6.75                      | 1.19            | 0.63            | 17.00           | 7.50            |
| 24E475   | 401480      | 401481       | 122            | 19                   | 7.50                      | 1.19            | 0.63            | 19.63           | 8.50            |
| 27E475   | 401482      | 401483       | 145            | 34                   | 7.50                      | 1.19            | 0.63            | 22.63           | 9.00            |
| 30E600   | 401484      | 401485       | 138            | 38                   | 7.50                      | 1.22            | 0.56            | 24.50           | 9.00            |
| 34E600   | 401486      | 401487       | 183            | 58                   | 9.00                      | 1.22            | 0.56            | 28.50           | 9.50            |
| 40E700   | 402250      | 402251       | 263            | 98                   | 10.00                     | 1.22            | 0.56            | 33.50           | 11.00           |
| 19VE475  | 402247      | 402248       | 36             | 3                    | 5.25                      | 1.13            | 0.75            | 11.63           | 5.50            |
| 24VE475  | 401478      | 401479       | 86             | 12                   | 6.75                      | 1.19            | 0.63            | 17.00           | 7.50            |
| 27VE475  | 401480      | 401481       | 122            | 19                   | 7.50                      | 1.19            | 0.63            | 19.63           | 8.50            |
| Size     | Part Number |              | Weight<br>Mass | Wk <sup>2</sup><br>J | D <sub>7</sub>            | D <sub>29</sub> | D <sub>42</sub> | H <sub>11</sub> | H <sub>14</sub> |
| 12E475   | 402241      | 402242       | 9,1            | 0,03                 | 121                       | 29              | 16              | 197             | 111             |
| 14E475   | 402244      | 402245       | 10             | 0,04                 | 121                       | 29              | 16              | 241             | 127             |
| 16E475   | 402247      | 402248       | 16             | 0,12                 | 133                       | 29              | 19              | 295             | 140             |
| 19E475   | 401476      | 401477       | 34             | 0,24                 | 171                       | 30              | 16              | 370             | 191             |
| 21.5E475 | 401478      | 401479       | 39             | 0,48                 | 171                       | 30              | 16              | 432             | 191             |
| 24E475   | 401480      | 401481       | 55             | 0,81                 | 191                       | 30              | 16              | 498             | 216             |
| 27E475   | 401482      | 401483       | 66             | 1,42                 | 191                       | 30              | 16              | 575             | 229             |
| 30E600   | 401484      | 401485       | 63             | 1,60                 | 191                       | 31              | 14              | 622             | 229             |
| 34E600   | 401486      | 401487       | 83             | 2,45                 | 229                       | 31              | 14              | 724             | 241             |
| 40E700   | 402250      | 402251       | 119            | 4,12                 | 254                       | 31              | 14              | 851             | 279             |
| 19VE475  | 402247      | 402248       | 16             | 0,12                 | 133                       | 29              | 19              | 295             | 140             |
| 24VE475  | 401478      | 401479       | 39             | 0,48                 | 171                       | 30              | 16              | 432             | 191             |
| 27VE475  | 401480      | 401481       | 55             | 0,81                 | 191                       | 30              | 16              | 498             | 216             |
| SI       | Thru Holes  | Tapped Holes | kg             | kg·m <sup>2</sup>    | Dimensions in millimeters |                 |                 |                 |                 |

**Notes:**

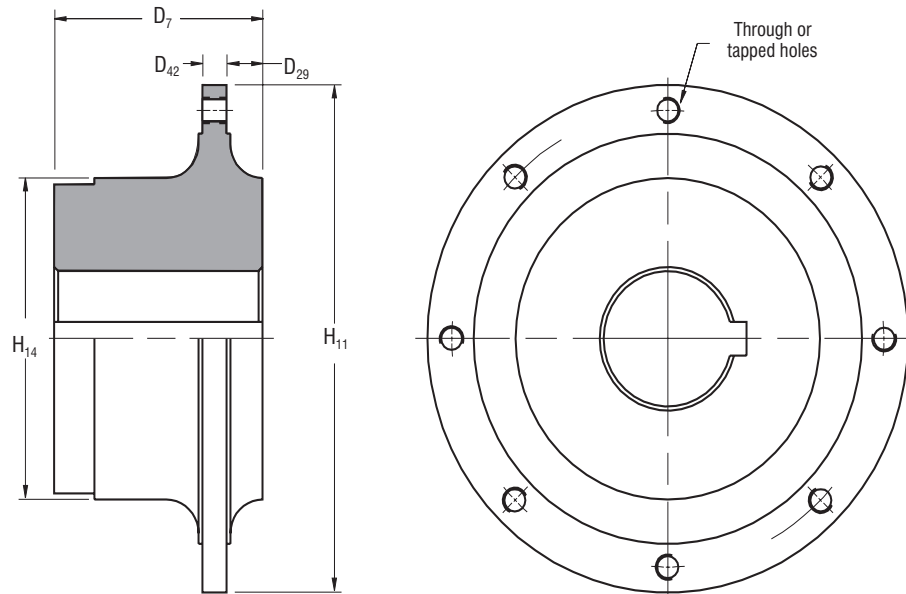
① Based upon minimum bores.

# Airflex® E and VE Mounting Components



Form E 614

Drum Hubs – Dimensional and Technical Data – Size 12 to 40



| English  | Thru Holes  | Tapped Holes | lb             | lb ft <sup>2</sup>   | Dimensions in inches      |                 |                 |                 |                 |
|----------|-------------|--------------|----------------|----------------------|---------------------------|-----------------|-----------------|-----------------|-----------------|
| 12E475   | 404351      | 402262       | 13             | 0.3                  | 3.75                      | 1.125           | 0.63            | 6.25            | 4.00            |
| 14E475   | 404352      | 402264       | 25             | 1.0                  | 4.25                      | 1.125           | 0.63            | 8.25            | 5.00            |
| 16E475   | 404353      | 402266       | 38             | 1.5                  | 5.00                      | 1.125           | 0.63            | 9.25            | 6.00            |
| 19E475   | 404354      | 402268       | 64             | 5                    | 6.00                      | 1.125           | 0.63            | 11.50           | 7.00            |
| 21.5E475 | 404355      | 402270       | 71             | 6                    | 6.00                      | 1.125           | 0.63            | 13.50           | 7.00            |
| 24E475   |             | 404638       | 133            | 18                   | 9.00                      | 1.125           | 0.63            | 15.00           | 9.50            |
| 27E475   | 403194      | 402274       | 121            | 15                   | 7.50                      | 1.125           | 0.75            | 15.00           | 8.50            |
| 30E600   | 404357      | 402276       | 162            | 35                   | 7.50                      | 1.125           | 0.75            | 20.00           | 9.00            |
| 34E600   | 404358      | 402278       | 214            | 59                   | 9.00                      | 1.125           | 0.75            | 23.00           | 9.50            |
| 40E700   | 404359      | 402280       | 330            | 139                  | 10.00                     | 1.125           | 0.75            | 28.50           | 11.00           |
| 19VE475  | 404353      | 402266       | 38             | 1.5                  | 5.00                      | 1.125           | 0.63            | 9.25            | 6.00            |
| 24VE475  | 404355      | 402270       | 71             | 6                    | 6.00                      | 1.125           | 0.63            | 13.50           | 7.00            |
| 27VE475  | 404356      | 402272       | 72             | 9                    | 6.50                      | 1.125           | 0.63            | 15.00           | 7.50            |
| Size     | Part Number |              | Weight<br>Mass | Wk <sup>2</sup><br>J | D <sub>7</sub>            | D <sub>29</sub> | D <sub>42</sub> | H <sub>11</sub> | H <sub>14</sub> |
| 12E475   | 404351      | 402262       | 5,9            | 0,01                 | 95                        | 28,6            | 15,9            | 159             | 102             |
| 14E475   | 404352      | 402264       | 11             | 0,04                 | 108                       | 28,6            | 15,9            | 210             | 127             |
| 16E475   | 404353      | 402266       | 17             | 0,06                 | 127                       | 28,6            | 15,9            | 235             | 152             |
| 19E475   | 404354      | 402268       | 29             | 0,19                 | 152                       | 28,6            | 15,9            | 292             | 178             |
| 21.5E475 | 404355      | 402270       | 32             | 0,26                 | 152                       | 28,6            | 15,9            | 343             | 178             |
| 24E475   |             | 404638       | 60             | 0,74                 | 229                       | 28,6            | 15,9            | 381             | 241             |
| 27E475   | 403194      | 402274       | 55             | 0,62                 | 191                       | 28,6            | 19,1            | 381             | 216             |
| 30E600   | 404357      | 402276       | 73             | 1,47                 | 191                       | 28,6            | 19,1            | 508             | 229             |
| 34E600   | 404358      | 402278       | 97             | 2,48                 | 229                       | 28,6            | 19,1            | 584             | 241             |
| 40E700   | 404359      | 402280       | 149            | 5,84                 | 254                       | 28,6            | 19,1            | 724             | 279             |
| 19VE475  | 404353      | 402266       | 17             | 0,06                 | 127                       | 28,6            | 15,9            | 235             | 152             |
| 24VE475  | 404355      | 402270       | 32             | 0,25                 | 152                       | 28,6            | 15,9            | 343             | 178             |
| 27VE475  | 404356      | 402272       | 33             | 0,38                 | 165                       | 28,6            | 15,9            | 381             | 191             |
| SI       | Thru Holes  | Tapped Holes | kg             | kg.m <sup>2</sup>    | Dimensions in millimeters |                 |                 |                 |                 |

**Notes:**

① Based upon minimum bores.

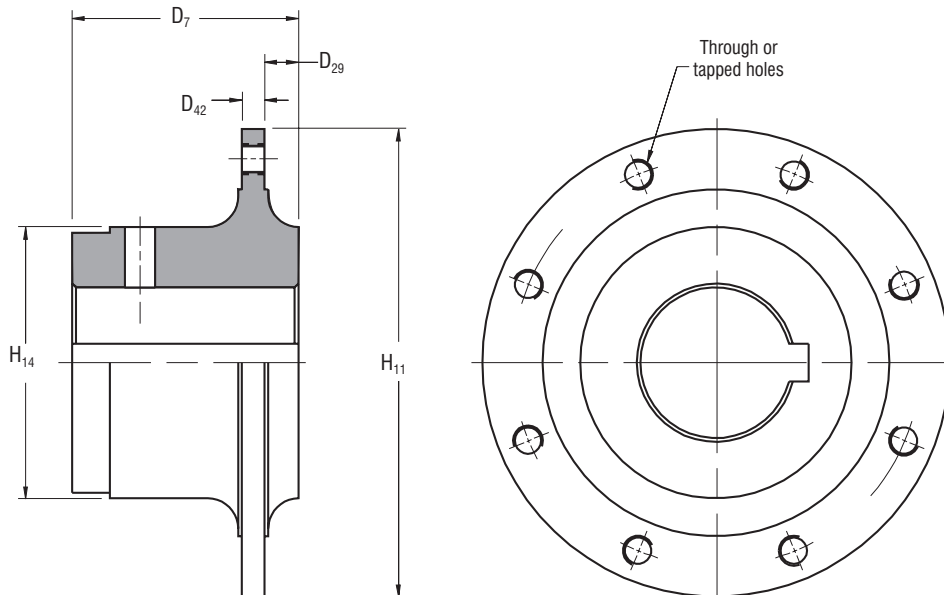


# Airflex® E and VE Mounting Components



Form E 618

Dual Adapter Ring Hubs – Dimensional and Technical Data  
Sizes 16 to 34



| English  | Thru Holes  | Tapped Holes | lb             | lb ft <sup>2</sup>   | Dimensions in inches      |                 |                 |                 |                 |
|----------|-------------|--------------|----------------|----------------------|---------------------------|-----------------|-----------------|-----------------|-----------------|
| 16E475   | 402290      | 402291       | 28             | 1                    | 4.25                      | 1.13            | 0.63            | 8.25            | 5.00            |
| 19E475   | 402292      | 402293       | 48             | 3                    | 6.00                      | 1.13            | 0.63            | 11.00           | 7.00            |
| 21.5E475 | 402294      | 402295       | 62             | 5                    | 6.00                      | 1.13            | 0.63            | 12.50           | 7.00            |
| 24E475   | 402296      | 402297       | 116            | 10                   | 7.50                      | 1.13            | 0.75            | 15.50           | 9.00            |
| 27E475   | 401447      | 401448       | 72             | 16                   | 6.75                      | 1.13            | 0.75            | 17.50           | 7.50            |
| 30E600   | 402298      | 402299       | 133            | 26                   | 7.50                      | 1.13            | 0.75            | 19.00           | 9.00            |
| 34E600   | 402300      | 402301       | 125            | 51                   | 7.50                      | 1.13            | 0.75            | 22.88           | 9.00            |
| 19VE475  | 402290      | 402291       | 28             | 1                    | 4.25                      | 1.13            | 0.63            | 8.25            | 5.00            |
| 24VE475  | 402294      | 402297       | 62             | 5                    | 6.00                      | 1.13            | 0.63            | 12.50           | 7.00            |
| 27VE475  | 402296      | 402297       | 116            | 10                   | 7.50                      | 1.13            | 0.75            | 17.50           | 7.50            |
| Size     | Part Number |              | Weight<br>Mass | Wk <sup>2</sup><br>J | D <sub>7</sub>            | D <sub>29</sub> | D <sub>42</sub> | H <sub>11</sub> | H <sub>14</sub> |
| 16E475   | 402290      | 402291       | 13             | 0,04                 | 108                       | 28,6            | 15,9            | 210             | 127             |
| 19E475   | 402292      | 402293       | 22             | 0,11                 | 152                       | 28,6            | 15,9            | 279             | 178             |
| 21.5E475 | 402294      | 402295       | 28             | 0,21                 | 152                       | 28,6            | 15,9            | 318             | 178             |
| 24E475   | 402296      | 402297       | 53             | 0,41                 | 191                       | 28,6            | 19,1            | 394             | 229             |
| 27E475   | 401447      | 401448       | 32             | 0,67                 | 171                       | 28,6            | 19,1            | 445             | 191             |
| 30E600   | 402298      | 402299       | 60             | 1,09                 | 191                       | 28,6            | 19,1            | 483             | 229             |
| 34E600   | 402300      | 402301       | 56             | 2,14                 | 191                       | 28,6            | 19,1            | 581             | 229             |
| 19VE475  | 402290      | 402291       | 13             | 0,04                 | 108                       | 28,6            | 16,0            | 209,6           | 127,0           |
| 24VE475  | 402294      | 402295       | 28             | 0,21                 | 152                       | 28,6            | 16,0            | 317,5           | 177,8           |
| 27VE475  | 402296      | 402297       | 53             | 0,42                 | 191                       | 28,6            | 19,1            | 444,5           | 190,5           |
| SI       | Thru Holes  | Tapped Holes | kg             | kg m <sup>2</sup>    | Dimensions in millimeters |                 |                 |                 |                 |

**Notes:**

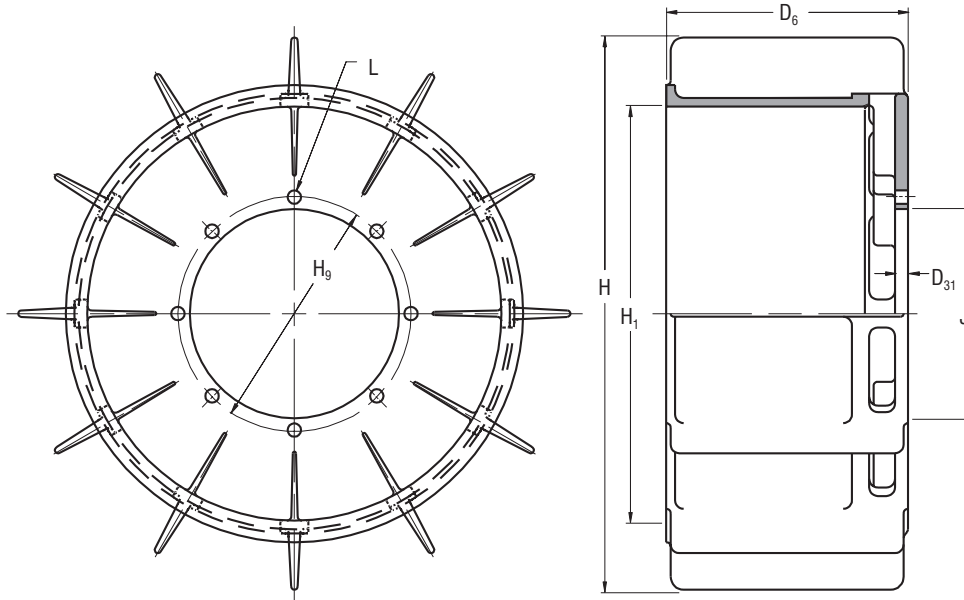
① Based upon minimum bores.

# Airflex® E and VE Mounting Components



Form E 615

Ventilated Drums – Dimensional and Technical Data – Sizes 12 to 40



| English  | Dimensions in inches |       |       |        |        |    | Thru Holes | Tapped Holes | lb     | lbft <sup>2</sup> | in  | Thru Holes | Tapped Holes | lb     | lbft <sup>2</sup> | in  |      |       |
|----------|----------------------|-------|-------|--------|--------|----|------------|--------------|--------|-------------------|-----|------------|--------------|--------|-------------------|-----|------|-------|
| 12E475   | 0.75                 | 18.00 | 12.00 | 5.063  | 4.187  | 6  | 0.53       | 1/2-13       | 510363 | 510536            | 95  | 30         | 8.00         | 401313 | N/A               | 155 | 45   | 14.00 |
| 14E475   | 0.75                 | 20.00 | 14.00 | 7.250  | 6.250  | 6  | 0.53       | 1/2-13       | 510079 | 510417            | 105 | 45         | 8.00         | 401315 | 402033            | 200 | 70   | 14.00 |
| 16E475   | 0.75                 | 22.00 | 16.00 | 7.750  | 6.250  | 6  | 0.78       | 3/4-10       | 510364 | 510453            | 120 | 60         | 8.00         | 401317 | 402034            | 235 | 155  | 14.00 |
| 19E475   | 0.75                 | 25.00 | 19.00 | 10.000 | 8.250  | 8  | 0.78       | 3/4-10       | 412715 | 413328            | 140 | 85         | 8.00         | 401319 | 402035            | 275 | 190  | 14.00 |
| 21.5E475 | 0.75                 | 29.50 | 21.50 | 12.000 | 10.750 | 6  | 0.78       | 3/4-10       | 510365 | 510537            | 170 | 140        | 8.00         | 401321 | 402036            | 300 | 285  | 14.00 |
| 24E475   | 0.75                 | 32.00 | 24.00 | 13.500 | 12.125 | 8  | 0.78       | 3/4-10       | 401303 | 401534            | 195 | 220        | 8.00         | 401323 | 402037            | 315 | 330  | 14.00 |
| 27E475   | 0.75                 | 35.00 | 27.00 | 13.500 | 12.125 | 8  | 0.78       | 3/4-10       | 510077 | 510418            | 240 | 275        | 8.00         | 401325 | 402038            | 430 | 570  | 14.00 |
| 30E600   | 1.00                 | 38.00 | 30.00 | 18.500 | 16.750 | 10 | 0.78       | 3/4-10       | 401307 | 401536            | 315 | 615        | 9.75         | 401327 | 402039            | 600 | 960  | 17.75 |
| 34E600   | 1.00                 | 42.00 | 34.00 | 21.500 | 19.500 | 14 | 0.78       | 3/4-10       | 401309 | 401537            | 395 | 730        | 9.75         | 401329 | 402040            | 645 | 1300 | 17.75 |
| 40E700   | 1.00                 | 48.00 | 40.00 | 27.000 | 25.000 | 18 | 0.78       | 3/4-10       | 401712 | 401538            | 480 | 1210       | 10.75        | 401331 | 402041            | 775 | 2170 | 20.00 |
| 19VE475  | 0.75                 | 25.00 | 19.00 | 10.000 | 8.250  | 8  | 0.78       | 3/4-10       | 412715 | 413328            | 140 | 85         | 8.00         | 401319 | 402035            | 275 | 190  | 14.00 |
| 24VE475  | 0.75                 | 32.00 | 24.00 | 13.500 | 12.125 | 8  | 0.78       | 3/4-10       | 401303 | 401534            | 195 | 220        | 8.00         | 401323 | 402037            | 315 | 330  | 14.00 |
| 27VE475  | 0.75                 | 35.00 | 27.00 | 13.500 | 12.125 | 8  | 0.78       | 3/4-10       | 510077 | 510418            | 240 | 275        | 8.00         | 401325 | 402038            | 430 | 570  | 14.00 |

| Size     | D <sub>31</sub> | H    | H <sub>1</sub> | H <sub>g</sub> | J <sub>g</sub> | No.                 |        | Part Number | Weight | Wk <sup>2</sup> | D <sub>6</sub> | Part Number |              | Weight | Wk <sup>2</sup> | D <sub>6</sub> |       |                   |
|----------|-----------------|------|----------------|----------------|----------------|---------------------|--------|-------------|--------|-----------------|----------------|-------------|--------------|--------|-----------------|----------------|-------|-------------------|
|          |                 |      |                |                |                | Thru                | Tapped |             |        |                 |                | Thru Holes  | Tapped Holes |        |                 |                |       |                   |
|          |                 |      |                |                |                | Single Element Drum |        |             |        |                 |                |             |              |        |                 |                |       | Dual Element Drum |
| 12E475   | 19              | 457  | 305            | 128,6          | 106,3          | 6                   | 13     | 1/2-13      | 510363 | 510536          | 43             | 1,26        | 203          | 401313 | N/A             | 70             | 1,89  | 356               |
| 14E475   | 19              | 508  | 356            | 184,2          | 158,8          | 6                   | 13     | 1/2-13      | 510079 | 510417          | 48             | 1,89        | 203          | 401315 | 402033          | 91             | 2,94  | 356               |
| 16E475   | 19              | 559  | 406            | 196,9          | 158,8          | 6                   | 20     | 3/4-10      | 510364 | 510453          | 54             | 2,52        | 203          | 401317 | 402034          | 106            | 6,51  | 356               |
| 19E475   | 19              | 635  | 483            | 254,0          | 209,6          | 8                   | 20     | 3/4-10      | 412715 | 413328          | 63             | 3,57        | 203          | 401319 | 402035          | 125            | 7,98  | 356               |
| 21.5E475 | 19              | 749  | 546            | 304,8          | 273,1          | 6                   | 20     | 3/4-10      | 510365 | 510537          | 77             | 5,88        | 203          | 401321 | 402036          | 136            | 11,97 | 356               |
| 24E475   | 19              | 813  | 610            | 342,9          | 308,0          | 8                   | 20     | 3/4-10      | 401303 | 401534          | 88             | 9,24        | 203          | 401323 | 402037          | 143            | 13,86 | 356               |
| 27E475   | 19              | 889  | 686            | 342,9          | 308,0          | 8                   | 20     | 3/4-10      | 510077 | 510418          | 109            | 11,55       | 203          | 401325 | 402038          | 195            | 23,94 | 356               |
| 30E600   | 25              | 965  | 762            | 469,9          | 425,5          | 10                  | 20     | 3/4-10      | 401307 | 401536          | 143            | 25,83       | 248          | 401327 | 402039          | 272            | 40,32 | 451               |
| 34E600   | 25              | 1067 | 864            | 546,1          | 495,3          | 14                  | 20     | 3/4-10      | 401309 | 401537          | 179            | 30,66       | 248          | 401329 | 402040          | 292            | 54,60 | 451               |
| 40E700   | 25              | 1219 | 1016           | 685,8          | 635,0          | 18                  | 20     | 3/4-10      | 401712 | 401538          | 217            | 50,82       | 273          | 401331 | 402041          | 351            | 91,14 | 508               |
| 19VE475  | 19              | 635  | 483            | 254,0          | 209,6          | 8                   | 20     | 3/4-10      | 412715 | 413328          | 63             | 3,57        | 203          | 401319 | 402035          | 125            | 7,98  | 356               |
| 24VE475  | 19              | 813  | 610            | 342,9          | 308,0          | 8                   | 20     | 3/4-10      | 401303 | 401534          | 88             | 9,24        | 203          | 401323 | 402037          | 143            | 13,86 | 356               |
| 27VE475  | 19              | 889  | 686            | 342,9          | 308,0          | 8                   | 20     | 3/4-10      | 510077 | 510418          | 109            | 11,55       | 203          | 401325 | 402038          | 195            | 23,94 | 356               |

| SI | Dimensions in millimeters |  |  |  |  |  | Thru Holes | Tapped Holes | kg | kg m <sup>2</sup> | mm | Thru Holes | Tapped Holes | kg | kg m <sup>2</sup> | mm |
|----|---------------------------|--|--|--|--|--|------------|--------------|----|-------------------|----|------------|--------------|----|-------------------|----|
|----|---------------------------|--|--|--|--|--|------------|--------------|----|-------------------|----|------------|--------------|----|-------------------|----|

**Notes:**

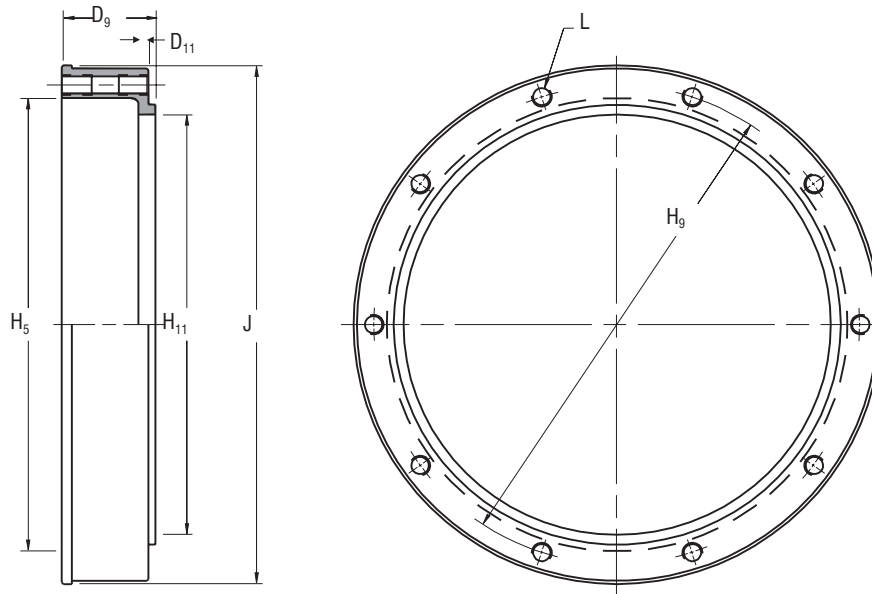
- ① Tolerance +0.005/-0.000 in (0,13/-0,00 mm)
- ② American National Standard for Unified Screw Threads.

# Airflex® E and VE Mounting Components



Form E 612

Adapter Rings – Dimensional and Technical Data – Sizes 12 to 40



| English         |       | lb  | lb ft <sup>2</sup> | Dimensions in inches |     |       |       |       |        |    |        |      |
|-----------------|-------|-----|--------------------|----------------------|-----|-------|-------|-------|--------|----|--------|------|
| <b>12E475</b>   | 12117 | 21  | 2                  | 3.38                 | .19 | 6.25  | 7.00  | 5.50  | 8.120  | 10 | 3/8-16 | 0.75 |
| <b>14E475</b>   | 12118 | 25  | 3                  | 3.38                 | .19 | 8.00  | 8.75  | 7.13  | 9.745  | 12 | 3/8-16 | 0.63 |
| <b>16E475</b>   | 12119 | 37  | 6                  | 3.38                 | .19 | 9.75  | 10.75 | 9.13  | 11.745 | 8  | 1/2-13 | 0.88 |
| <b>19E475</b>   | 12120 | 53  | 14                 | 3.38                 | .25 | 12.75 | 13.75 | 11.63 | 14.745 | 10 | 1/2-13 | 1.00 |
| <b>21.5E475</b> | 12121 | 82  | 28                 | 3.44                 | .25 | 14.25 | 15.75 | 13.75 | 17.120 | 8  | 3/4-10 | 1.12 |
| <b>24E475</b>   | 12122 | 102 | 50                 | 3.50                 | .25 | 16.75 | 18.25 | 16.00 | 19.745 | 10 | 3/4-10 | 1.12 |
| <b>27E475</b>   | 12123 | 138 | 80                 | 3.50                 | .25 | 19.75 | 21.25 | 18.00 | 22.620 | 12 | 3/4-10 | 1.12 |
| <b>30E600</b>   | 12124 | 192 | 145                | 4.31                 | .31 | 21.50 | 23.00 | 20.00 | 24.870 | 14 | 3/4-10 | 1.12 |
| <b>34E600</b>   | 12125 | 246 | 240                | 4.31                 | .31 | 25.50 | 27.00 | 24.00 | 28.870 | 16 | 3/4-10 | 1.25 |
| <b>40E700</b>   | 12126 | 331 | 445                | 4.88                 | .31 | 30.50 | 32.00 | 29.00 | 33.745 | 18 | 3/4-10 | 1.50 |
| <b>19VE475</b>  | 12120 | 37  | 6                  | 3.38                 | .25 | 9.75  | 10.75 | 9.13  | 11.745 | 8  | 1/2-13 | 0.88 |
| <b>24VE475</b>  | 12121 | 82  | 28                 | 3.44                 | .25 | 14.25 | 15.75 | 13.75 | 17.120 | 8  | 3/4-10 | 1.12 |
| <b>27VE475</b>  | 12122 | 102 | 50                 | 3.50                 | .25 | 16.75 | 18.25 | 16.00 | 19.475 | 10 | 3/4-10 | 1.12 |

| Size            | Part Number | Weight | Wk <sup>2</sup> | D <sub>9</sub> | D <sub>11</sub> | H <sub>5</sub> | H <sub>9</sub> | H <sub>11</sub> | J     | No. | Size   | Depth |
|-----------------|-------------|--------|-----------------|----------------|-----------------|----------------|----------------|-----------------|-------|-----|--------|-------|
|                 |             | Mass   | J               |                |                 |                |                |                 |       | L ② |        |       |
|                 |             |        |                 |                |                 |                |                |                 |       | No. | Size   | Depth |
| <b>12E475</b>   | 12117       | 9,5    | 0,07            | 86             | 4,83            | 159            | 178            | 140             | 206,2 | 10  | 3/8-16 | 19    |
| <b>14E475</b>   | 12118       | 11     | 0,11            | 86             | 4,83            | 203            | 222            | 181             | 247,5 | 12  | 3/8-16 | 16    |
| <b>16E475</b>   | 12119       | 17     | 0,26            | 86             | 4,83            | 248            | 273            | 232             | 298,3 | 8   | 1/2-13 | 22    |
| <b>19E475</b>   | 12120       | 24     | 0,57            | 86             | 6,35            | 324            | 349            | 295             | 374,5 | 10  | 1/2-13 | 25    |
| <b>21.5E475</b> | 12121       | 37     | 1,19            | 87             | 6,35            | 362            | 400            | 349             | 434,8 | 8   | 3/4-10 | 28    |
| <b>24E475</b>   | 12122       | 46     | 2,10            | 89             | 6,35            | 425            | 464            | 406             | 501,5 | 10  | 3/4-10 | 28    |
| <b>27E475</b>   | 12123       | 63     | 3,37            | 89             | 6,35            | 502            | 540            | 457             | 574,5 | 12  | 3/4-10 | 28    |
| <b>30E600</b>   | 12124       | 87     | 6,09            | 109            | 7,87            | 546            | 584            | 508             | 631,7 | 14  | 3/4-10 | 28    |
| <b>34E600</b>   | 12125       | 111    | 10,08           | 109            | 7,87            | 648            | 686            | 610             | 733,3 | 16  | 3/4-10 | 32    |
| <b>40E700</b>   | 12126       | 150    | 18,69           | 124            | 7,87            | 775            | 813            | 737             | 857,1 | 18  | 3/4-10 | 38    |
| <b>19VE475</b>  | 12120       | 17     | 0,26            | 86             | 6,35            | 248            | 273            | 232             | 298,3 | 8   | 1/2-13 | 22    |
| <b>24VE475</b>  | 12121       | 37     | 1,19            | 87             | 6,35            | 362            | 400            | 349             | 434,8 | 8   | 3/4-10 | 28    |
| <b>27VE475</b>  | 12122       | 46     | 2,10            | 89             | 6,35            | 425            | 464            | 406             | 494,7 | 10  | 3/4-10 | 28    |

| SI |  | kg | kg m <sup>2</sup> | Dimensions in millimeters |  |  |  |  |  |  |  |
|----|--|----|-------------------|---------------------------|--|--|--|--|--|--|--|
|----|--|----|-------------------|---------------------------|--|--|--|--|--|--|--|

**Notes:**

① Tolerance +0.000/-0.005 in (+0,00/-0,13 mm)

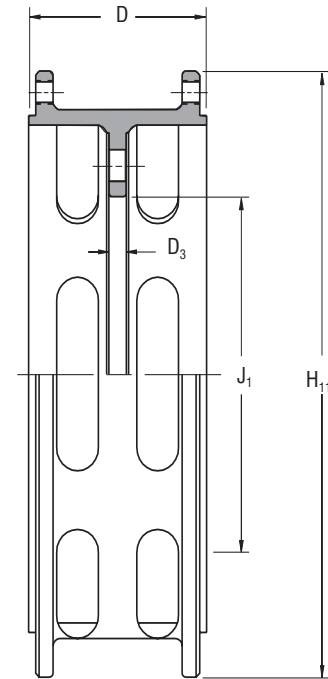
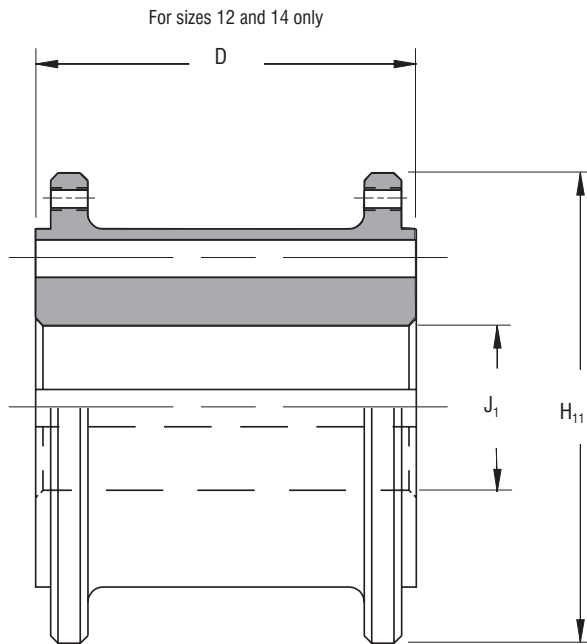
② American National Standard for Unified Screw Threads.

# Airflex® E and VE Mounting Components



Form E 613

Dual Adapter Rings – Dimensional and Technical Data – Sizes 12 to 34



| English         |             | lb     | lb ft <sup>2</sup> | Dimensions in inches      |                 |                |                 |                     |     |      |
|-----------------|-------------|--------|--------------------|---------------------------|-----------------|----------------|-----------------|---------------------|-----|------|
| <b>12E475</b>   | 400234      | 38 ①   | 2 ①                | 6.38                      | N/A             | N/A            | 7.88            | ③                   | N/A | N/A  |
| <b>14E475</b>   | 400476      | 64 ①   | 5 ①                | 6.38                      | N/A             | N/A            | 9.50            | ③                   | N/A | N/A  |
| <b>16E475</b>   | 012135      | 72     | 10                 | 6.25                      | 0.50            | 6.75           | 11.63           | 5.500               | 8   | 0.78 |
| <b>19E475</b>   | 012208      | 106    | 30                 | 6.38                      | 0.50            | 9.50           | 14.63           | 8.000               | 10  | 0.78 |
| <b>21.5E475</b> | 012098      | 116    | 40                 | 6.38                      | 0.63            | 11.00          | 17.13           | 9.625               | 6   | 0.78 |
| <b>24E475</b>   | 012209      | 187    | 90                 | 6.38                      | 0.63            | 13.50          | 19.62           | 11.500              | 8   | 1.03 |
| <b>27E475</b>   | 012210      | 234    | 145                | 6.38                      | 0.63            | 16.00          | 22.63           | 14.625              | 8   | 0.78 |
| <b>30E600</b>   | 012211      | 353    | 250                | 8.13                      | 0.75            | 17.00          | 24.50           | 15.000              | 12  | 1.03 |
| <b>34E600</b>   | 012212      | 453    | 445                | 8.13                      | 0.75            | 21.00          | 28.50           | 19.000              | 12  | 1.03 |
| Size            | Part Number | Weight | Wk <sup>2</sup>    | D                         | D <sub>31</sub> | H <sub>3</sub> | H <sub>11</sub> | ②<br>J <sub>1</sub> | No  | Dia. |
|                 |             | Mass   | J                  |                           |                 |                |                 |                     | L   |      |
|                 |             |        |                    |                           |                 |                |                 |                     | No  | Dia. |
| <b>12E475</b>   | 400234      | 17 ①   | 0,91 ①             | 162                       | N/A             | N/A            | 200             | ③                   | N/A | N/A  |
| <b>14E475</b>   | 400476      | 29 ①   | 2,27 ①             | 162                       | N/A             | N/A            | 241             | ③                   | N/A | N/A  |
| <b>16E475</b>   | 012135      | 33     | 4,53               | 159                       | 13              | 171            | 295             | 140                 | 8   | 20   |
| <b>19E475</b>   | 012208      | 48     | 13,59              | 162                       | 13              | 241            | 372             | 203                 | 10  | 20   |
| <b>21.5E475</b> | 012098      | 53     | 18,12              | 162                       | 16              | 279            | 435             | 244                 | 6   | 20   |
| <b>24E475</b>   | 012209      | 85     | 40,77              | 162                       | 16              | 343            | 498             | 292                 | 8   | 26   |
| <b>27E475</b>   | 012210      | 106    | 65,69              | 162                       | 16              | 406            | 575             | 371                 | 8   | 20   |
| <b>30E600</b>   | 012211      | 160    | 113,3              | 207                       | 19              | 432            | 622             | 381                 | 12  | 26   |
| <b>34E600</b>   | 012212      | 205    | 201,6              | 206                       | 19              | 533            | 724             | 483                 | 12  | 26   |
| SI              |             | kg     | kg m <sup>2</sup>  | Dimensions in millimeters |                 |                |                 |                     |     |      |

**Notes:**

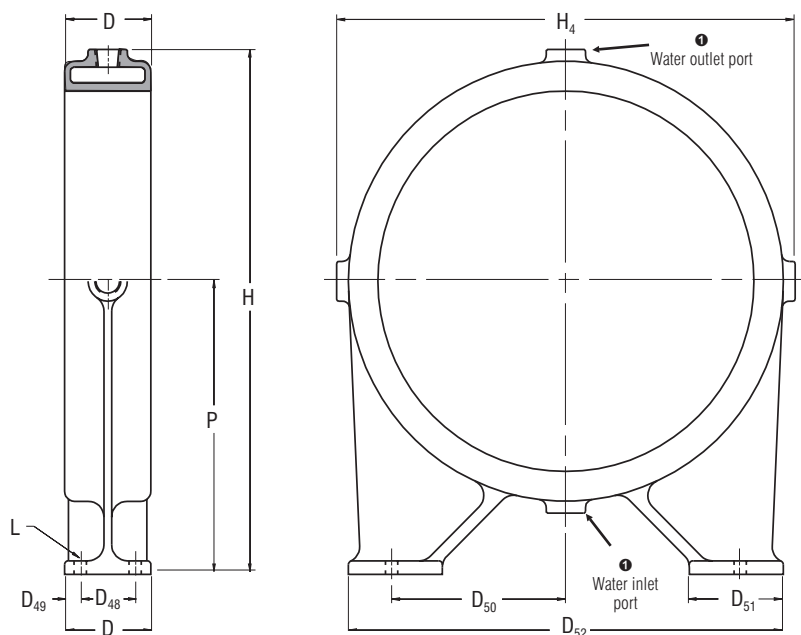
- ① Based upon minimum bores.
- ② Tolerance +0.005/-0.000 in (+0,13/-0,00 mm)
- ③ Adapter ring bored and keyseated for shaft mounting. Bore 2.75 in (70 mm) minimum, 3.75 in (95 mm) maximum.

# Airflex® E Mounting Components



Form E 617

Water-Cooled Drums – Dimensional and Technical Data – Sizes 12 to 24



| English         |             | lb     | in <sup>3</sup>     | Dimensions in inches      |                 |                 |                 |                 |                 |       |                |      |      |       |
|-----------------|-------------|--------|---------------------|---------------------------|-----------------|-----------------|-----------------|-----------------|-----------------|-------|----------------|------|------|-------|
| <b>12E475</b>   | 403111      | 104    | 210                 | 5.50                      | 1.00            | 3.50            | 6.125           | 4.00            | 15.75           | 21.13 | 17.25          | 4    | 0.66 | 12.50 |
| <b>14E475</b>   | 403113      | 111    | 240                 | 5.50                      | 1.00            | 3.50            | 7.125           | 4.00            | 17.75           | 23.13 | 19.25          | 4    | 0.66 | 13.50 |
| <b>16E475</b>   | 402456      | 156    | 650                 | 5.50                      | 1.00            | 3.50            | 9.500           | 4.00            | 22.50           | 28.00 | 24.00          | 4    | 0.66 | 16.00 |
| <b>19E475</b>   | 402593      | 153    | 320                 | 5.50                      | 1.00            | 3.50            | 9.125           | 5.00            | 22.75           | 28.13 | 24.25          | 4    | 0.78 | 16.00 |
| <b>21.5E475</b> | 403115      | 178    | 350                 | 5.50                      | 1.00            | 3.50            | 9.875           | 6.00            | 25.25           | 30.63 | 26.75          | 4    | 0.78 | 17.25 |
| <b>24E475</b>   | 403117      | 202    | 390                 | 5.50                      | 1.00            | 3.50            | 11.125          | 6.00            | 27.75           | 33.13 | 29.25          | 4    | 0.78 | 18.50 |
| <b>27E475</b>   | 403119      | 223    | 430                 | 5.50                      | 1.00            | 3.50            | 12.625          | 6.00            | 30.75           | 36.13 | 32.25          | 4    | 0.78 | 20.00 |
| <b>30E600</b>   | 402876      | 289    | 730                 | 7.00                      | 1.25            | 4.50            | 13.625          | 7.00            | 33.75           | 39.13 | 35.25          | 4    | 1.06 | 21.50 |
| <b>34E600</b>   | 403121      | 316    | 820                 | 7.00                      | 1.25            | 4.50            | 15.625          | 7.00            | 37.75           | 43.13 | 39.25          | 4    | 1.06 | 23.50 |
| Size            | Part Number | Weight | Water Cavity Volume | D                         | D <sub>48</sub> | D <sub>49</sub> | D <sub>50</sub> | D <sub>51</sub> | D <sub>52</sub> | H     | H <sub>4</sub> | No.. | Dia  | P     |
|                 |             | Mass   |                     |                           |                 |                 |                 |                 |                 |       |                | No.. | Dia  |       |
|                 |             |        |                     |                           |                 |                 |                 |                 |                 |       |                |      |      |       |
| No..            | Dia         |        |                     |                           |                 |                 |                 |                 |                 |       |                |      |      |       |
| <b>12E475</b>   | 403111      | 47     | 3,44                | 140                       | 25              | 89              | 155,6           | 102             | 400             | 537   | 438            | 4    | 17   | 318   |
| <b>14E475</b>   | 403113      | 50     | 3,94                | 140                       | 25              | 89              | 181,0           | 102             | 451             | 587   | 489            | 4    | 17   | 343   |
| <b>16E475</b>   | 402456      | 71     | 10,7                | 140                       | 25              | 89              | 241,3           | 102             | 572             | 711   | 610            | 4    | 17   | 406   |
| <b>19E475</b>   | 402593      | 69     | 5,2                 | 140                       | 25              | 89              | 231,8           | 127             | 578             | 714   | 616            | 4    | 20   | 406   |
| <b>21.5E475</b> | 403115      | 81     | 5,7                 | 140                       | 25              | 89              | 250,8           | 152             | 641             | 778   | 679            | 4    | 20   | 438   |
| <b>24E475</b>   | 403117      | 92     | 6,4                 | 140                       | 25              | 89              | 282,6           | 152             | 705             | 841   | 743            | 4    | 20   | 470   |
| <b>27E475</b>   | 403119      | 101    | 7,1                 | 140                       | 25              | 89              | 320,7           | 152             | 781             | 918   | 819            | 4    | 20   | 508   |
| <b>30E600</b>   | 402876      | 131    | 12,0                | 178                       | 32              | 114             | 346,1           | 178             | 857             | 994   | 895            | 4    | 27   | 546   |
| <b>34E600</b>   | 403121      | 143    | 13,4                | 178                       | 32              | 114             | 396,9           | 178             | 959             | 1095  | 997            | 4    | 27   | 597   |
| SI              |             | kg     | dm <sup>3</sup>     | Dimensions in millimeters |                 |                 |                 |                 |                 |       |                |      |      |       |

**Notes:**

- ① 1 1/4 - 11 1/2 American National Pipe Thread. To insure a water-filled cavity, it is important that the water inlet be located at 6 o'clock and the outlet at 12 o'clock.