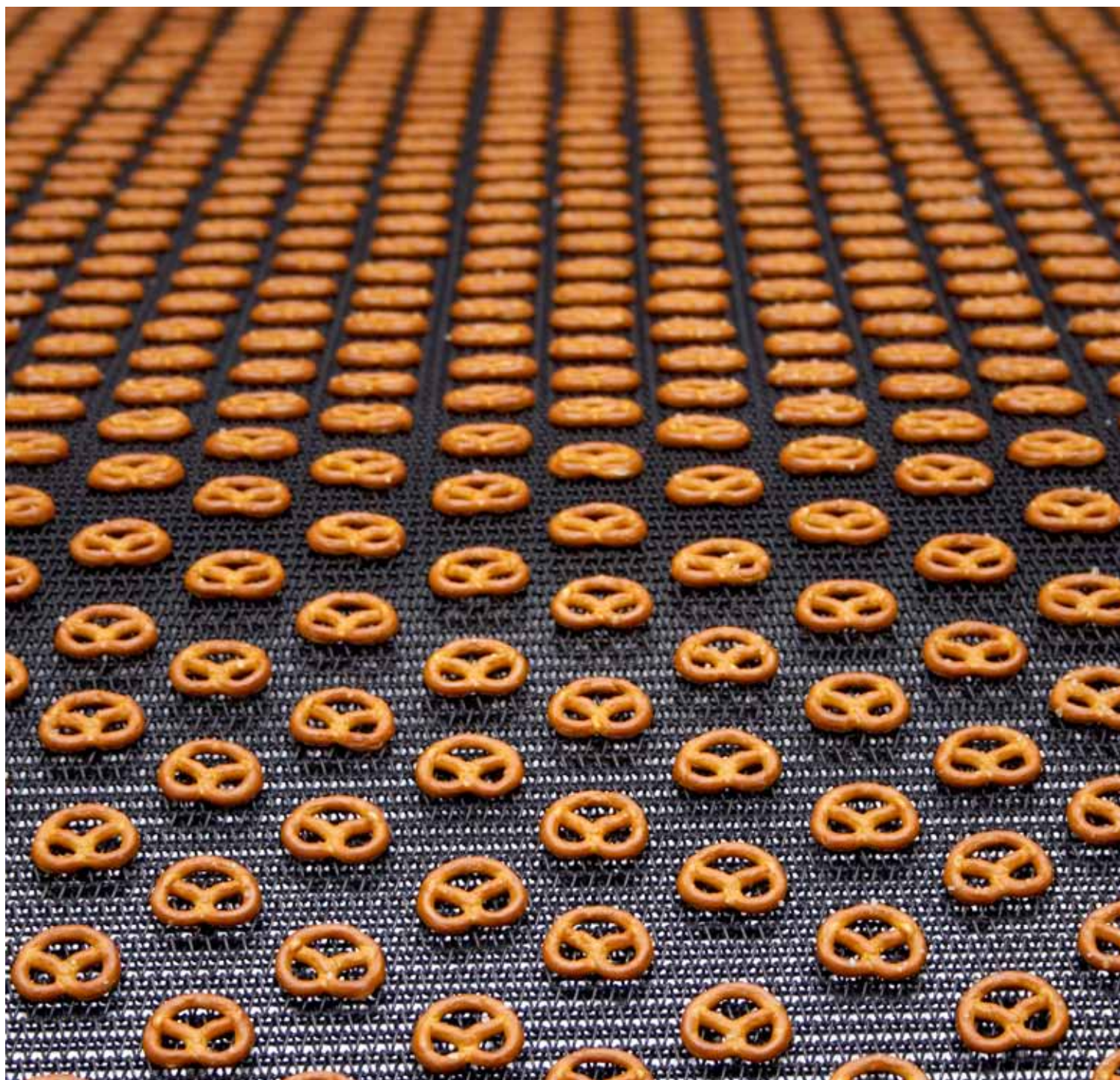




Product information

Drummotors

TM 80B20



Van der Graaf
Power Transmission Equipment



The TM 80's



playground



Introduction

TM 80B20



A wide range of applications

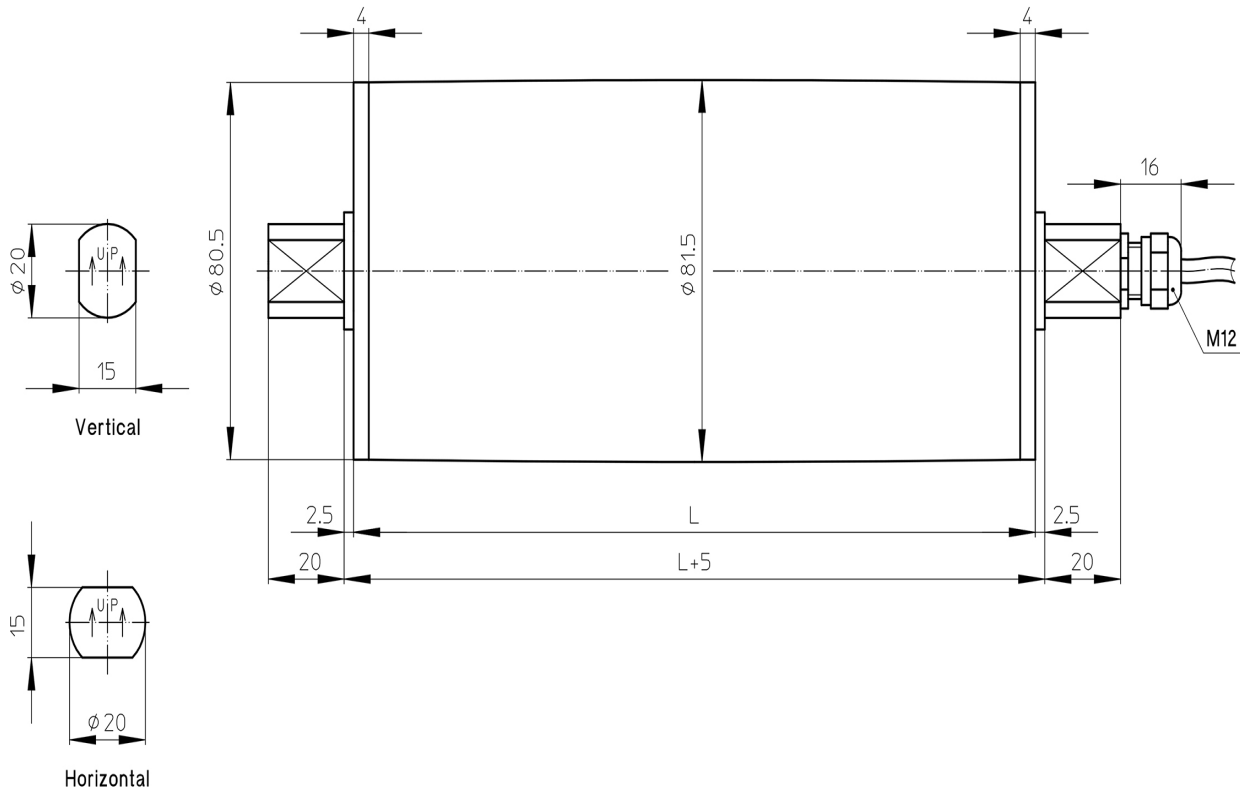
Van der Graaf has achieved a prominent position on both the domestic and international market with its "GV" Drummotors. The "GV" Drummotor has found success in a wide range of applications including the following: automotive, X-ray, construction, postal, courier, mining, aggregate, airline baggage, package flow, tyre manufacturing, fish processing, poultry processing, meat processing, agriculture, fruit and vegetable, farming, forestry, baking, dairy and many more.



Dimensions mild steel

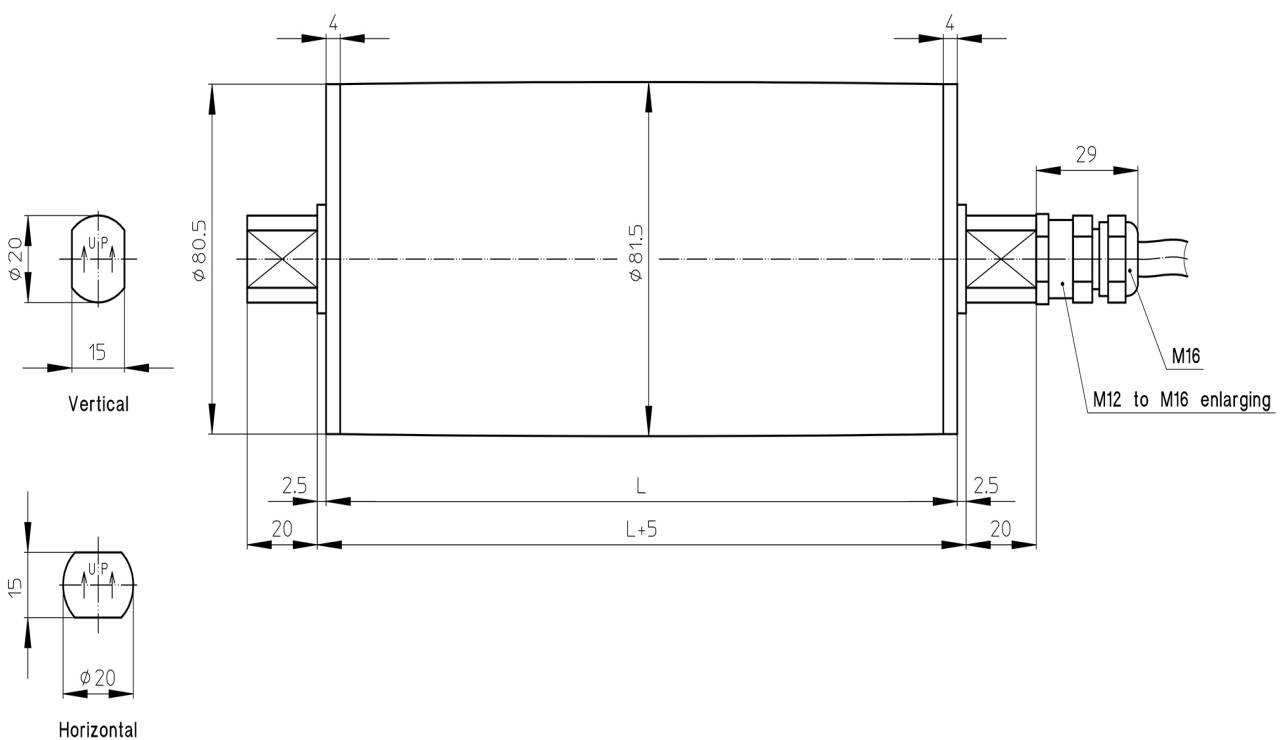
TM 80B20 Option 1

Drummotor with straight connector



TM 80B20 Option 1, M16

Drummotor with straight connector

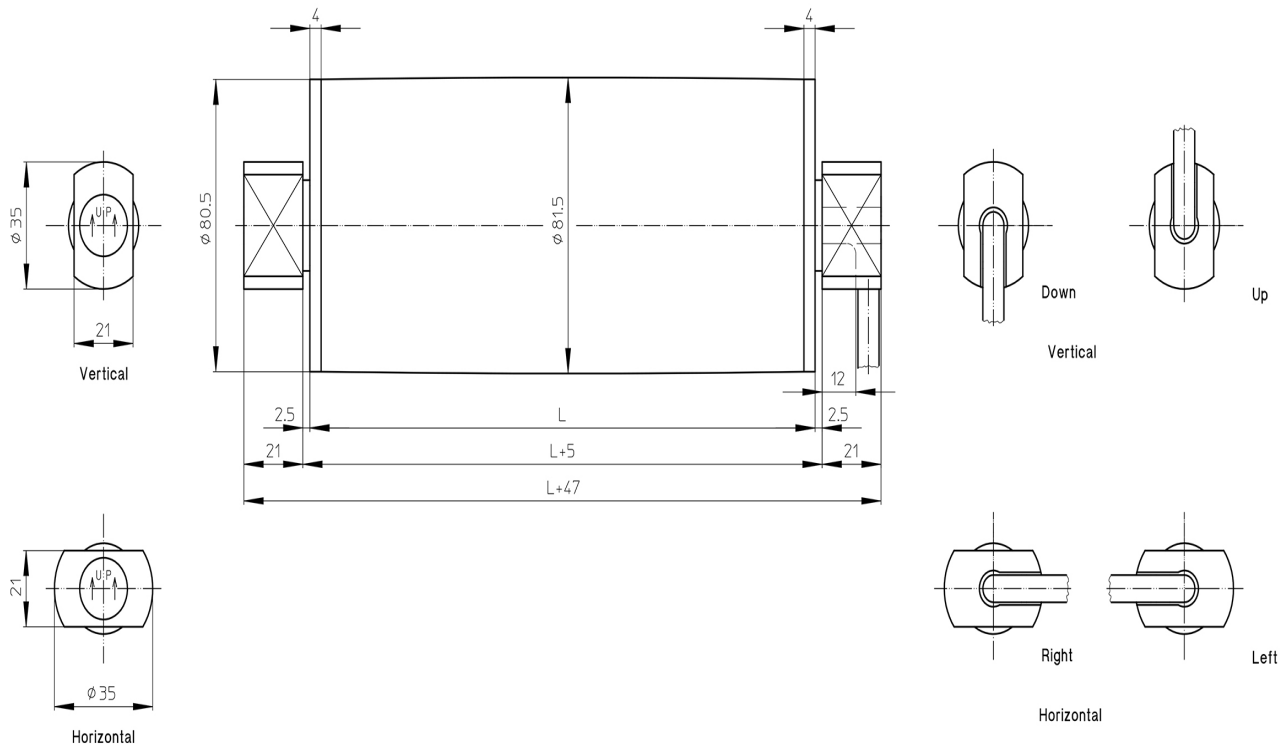




Dimensions stainless steel

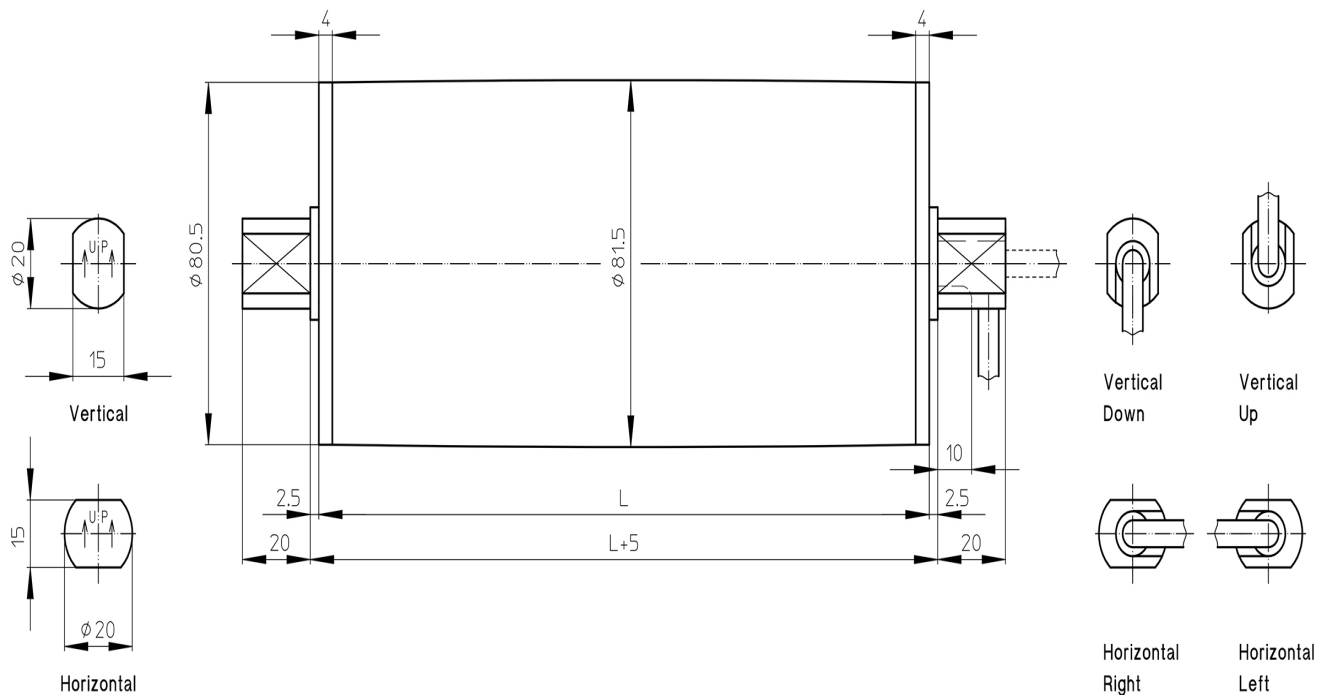
TM 80B20 Option 2

Drummotor with open cable outlet



TM 80B20 Option 4

Drummotor with open cable outlet

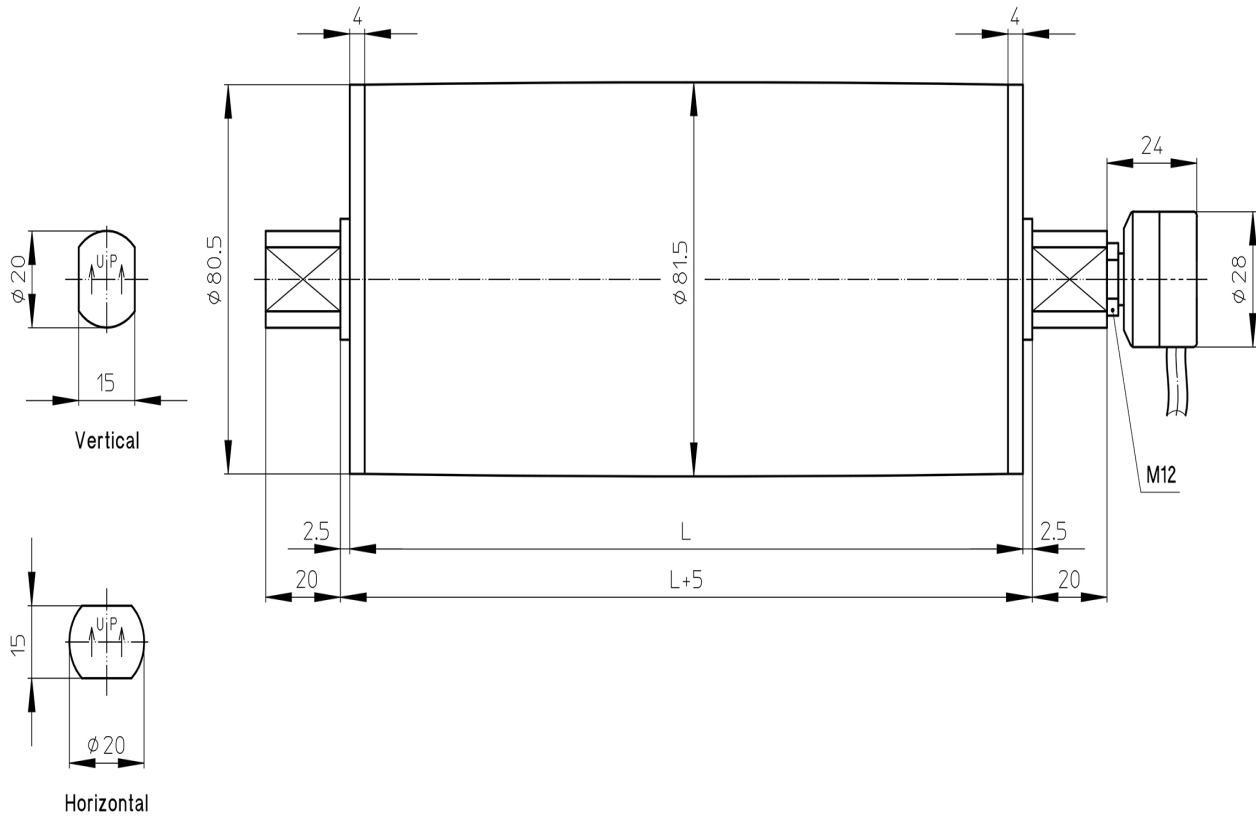




Dimensions stainless steel

TM 80B20 Option 5

Drummotor with open elbow connector



TM 80B20 Option 5, M16

Drummotor with open elbow connector

